

Classroom Dollars and Proposition 301 Results

Blue Elementary School District

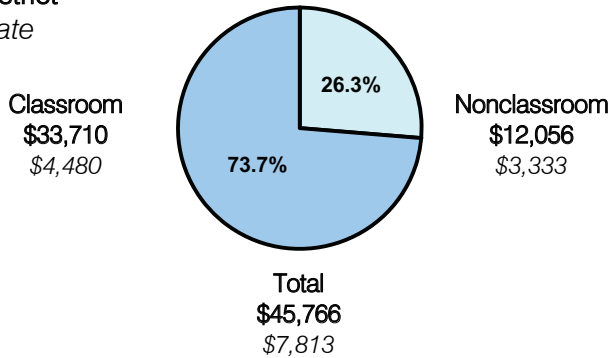
Greenlee County

District size: Very Small
 Students attending: 8
 Number of schools: 1
 Number of certified teachers: 1

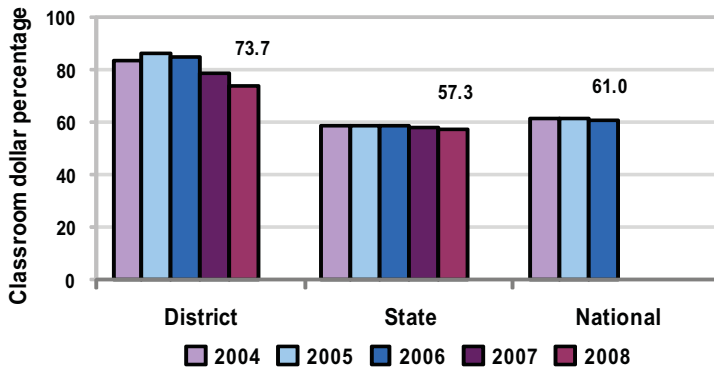
Classroom Dollars

Fiscal year 2008 averages per pupil

District
 State



5-year comparison



Expenditures by function

	Percentage					State 2008	National 2006
	2004	2005	2006	2007	2008		
Classroom dollars	83.2	86.4	84.5	78.8	73.7	57.3	61.0
Nonclassroom dollars:							
Administration	0.2		1.3	1.7	0.1	9.2	10.8
Plant operations	16.6	12.4	14.2	15.1	16.3	11.3	9.9
Food service						4.8	3.8
Transportation				4.4	9.9	4.4	4.2
Student support		1.1				7.4	5.2
Instruction support						5.4	4.9
Other		0.1				0.2	0.2

Comparative Information

	District			State
	2006	2007	2008	2008
Student/teacher ratio	7.0	3.0	8.0	17.3
Average teacher salary	n/a	n/a	n/a	\$44,967
Average years' experience	n/a	15.0	n/a	8.1

Classroom dollar ranking: 2 of 230 districts.

Proposition 301

District-reported 2008 results

Teacher pay

- The teacher earned \$8,400 in additional salary, which included performance pay for fiscal years 2002 through 2007.

Performance

- The District accomplished its goals, which were based on district, school, and individual performance.
- Students demonstrated 1 year's growth and had improved standardized test scores or they scored at the 50th-percentile or above on the appropriate norm-referenced test.
- The teacher attended at least 8 hours of professional development activities and received a satisfactory performance evaluation.

Menu

- Menu monies were used to increase teacher compensation and for professional development.