

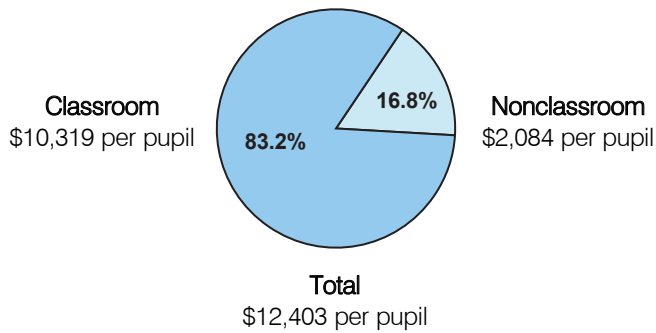
# Classroom Dollars and Proposition 301 Results

## Blue Elementary School District

District size: Very Small  
 Students attending: 5  
 Number of schools: 1  
 Number of certified teachers: 1

### Classroom Dollars

Fiscal year 2004

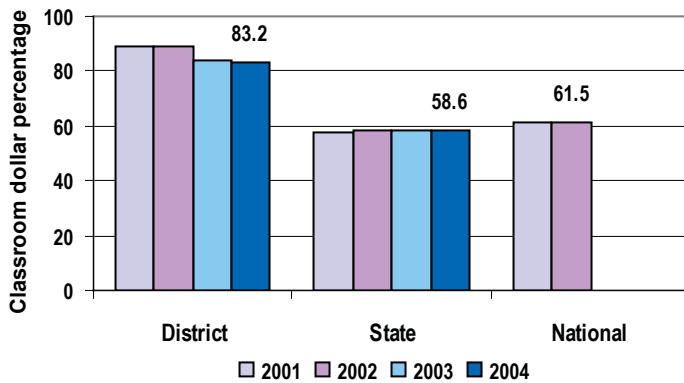


### Comparative Information

	District			State
	2002	2003	2004	2004
Student/teacher ratio	1.0	2.0	5.0	18.2
Average teacher salary	\$33,000	NA	NA	\$38,534
Average years' experience	15.0	15.0	15.0	8.7

Classroom dollar ranking: 1 of 227 districts.

### 4-year comparison



### Proposition 301

#### District-reported 2004 results

Because its attending student information, which is the basis for Proposition 301 distributions, was not available in time, ADE did not pay any Proposition 301 monies to the District in fiscal year 2004. However, the District is anticipated to receive fiscal year 2004 monies in fiscal year 2005 once data issues are resolved.

The District has very few students and in past years received only a small amount of Proposition 301 money. The District received a total of \$1,183 in the previous 2 years, and has not spent any of these monies. Unspent monies will continue to be available to the District for future spending.

### Expenditures by function

	District				State	National
	2001	2002	2003	2004	2004	2001
Classroom dollars	88.7	88.9	83.8	83.2	58.6	61.5
Nonclassroom dollars:						
Administration	0.4	0.6	3.8	0.2	9.5	10.9
Plant operations	10.9	10.5	12.4	16.6	11.7	9.7
Food service					4.7	4.0
Transportation					4.0	4.1
Student support					7.0	5.0
Instruction support					4.3	4.6
Other					0.2	0.2