

Blue Ridge Unified School District

Navajo County

Efficiency peer groups 4 and T-8, Achievement peer group 5¹

Legislative district(s): 7

District size, location:

Medium-large, Town

Students attending:

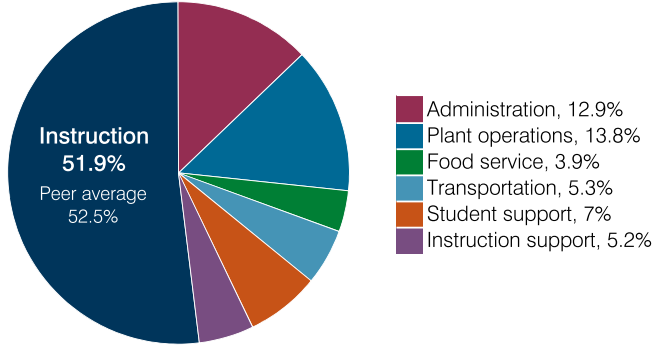
2,094

Number of schools:

3

OPERATIONAL EFFICIENCY

Spending by operational area



Efficiency measures relative to peer averages

Operational area	Measure	District	Peer average	State average
Administration	Cost per pupil	\$1,092	\$837	\$860
	Students per administrative position	72	69	66
Plant operations	Cost per square foot	\$4.61	\$5.61	\$6.34
	Square footage per student	254	184	156
Food service	Cost per meal	\$3.14	\$3.16	\$3.02
Transportation	Cost per mile	\$2.94	\$3.03	\$4.05
	Cost per rider	\$974	\$1,225	\$1,301

Very low Low Comparable High Very high

Per pupil spending

Spending by area	District		Peer average 2018	State average 2018
	2017	2018		
Instruction	\$ 4,134	\$ 4,393	\$ 4,194	\$ 4,480
Administration	943	1,092	837	860
Plant operations	1,082	1,172	1,004	988
Food service	326	333	421	425
Transportation	436	448	418	388
Student support	559	590	643	693
Instruction support	480	440	480	462
Total operational	7,960	8,468	7,997	8,296
Land and buildings	2,177	3,528	570	827
Equipment	1,725	897	389	409
Interest	290	562	200	228
Other	44	21	69	169
Total nonoperational	4,236	5,008	1,228	1,633
Total per pupil spending	\$ 12,196	\$ 13,476	\$ 9,225	\$ 9,929

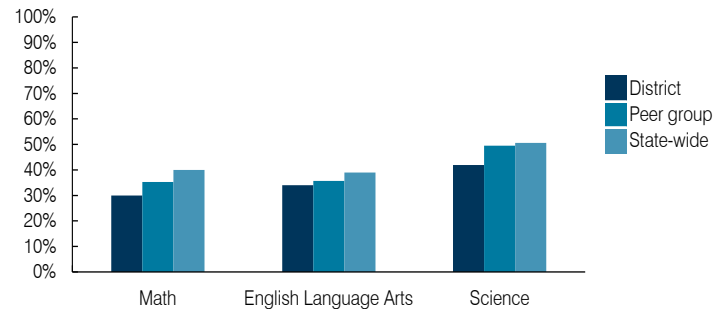
¹ See Appendix A for information such as districts included in each peer group and Appendix B for sources and methodology.

STUDENT ACHIEVEMENT, STUDENT AND TEACHER MEASURES, AND REVENUES

ADE-assigned school letter grades

Grade	Number of schools	Percentage of schools
A	0	0%
B	1	33%
C	2	67%
D	0	0%
F	0	0%

Students who passed State assessments



Student and teacher measures

Measure	District	Peer average	State average
Attendance rate	92%	93%	94%
Graduation rate (2017)	81%	86%	78%
Poverty rate (2017)	23%	22%	19%
Special education population	11%	13%	12%
Students per teacher	18.7	17.6	18.4
Average teacher salary	\$47,487	\$44,777	\$48,951
Amount from Prop 301	\$7,087	\$6,708	\$6,411
Average years of teacher experience	13.7	13.0	11.4
Percentage of teachers in first 3 years	17%	17%	19%

Per pupil revenues

Revenues by source	District		Peer average 2018	State average 2018
	2017	2018		
Federal	\$ 745	\$ 1,843	\$ 2,385	\$ 1,317
State	2,150	2,859	4,222	4,011
Local	6,327	7,344	3,291	4,592
Total per pupil revenues	\$ 9,222	\$ 12,046	\$ 9,898	\$ 9,920

Select revenues from common sources

Equalization formula funding	\$ 5,115	\$ 5,394	\$ 5,443	\$ 5,585
Grants	551	2,076	1,552	1,241
Donations and tax credits	73	66	63	90

Select revenues from less common sources

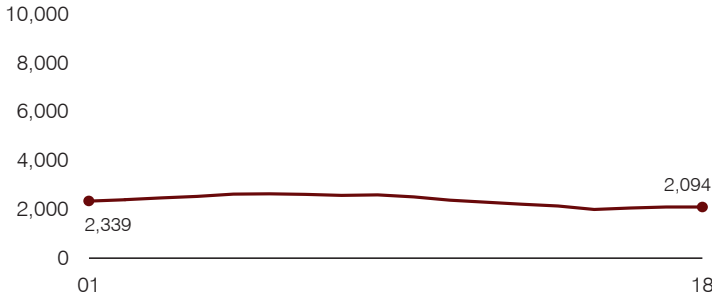
			Number of peers receiving
Desegregation	\$ 0	\$ 0	1 of 17
Small school adjustment	0	0	0 of 17
Federal impact aid	295	408	6 of 17
Voter-approved levy increases	1,299	2,440	13 of 17

Instructional spending percentage

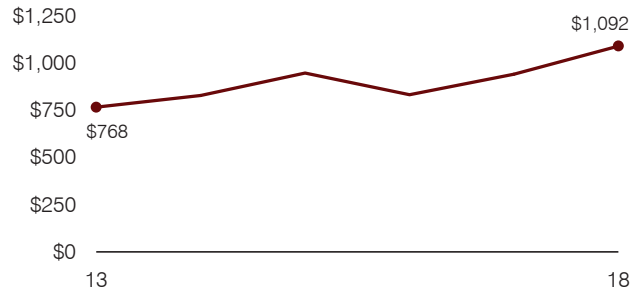
Year: 2001 2002 2003 2004 2005 2006 2007 2008 2009 2010 2011 2012 2013 2014 2015 2016 2017 2018
 Percentage: 60.7 63.0 61.4 63.1 62.1 61.8 59.8 59.3 64.1 61.6 56.0 55.0 56.8 55.1 52.5 53.1 51.9 51.9

TRENDS AND FINANCIAL STRESS ASSESSMENT
 Fiscal years as indicated

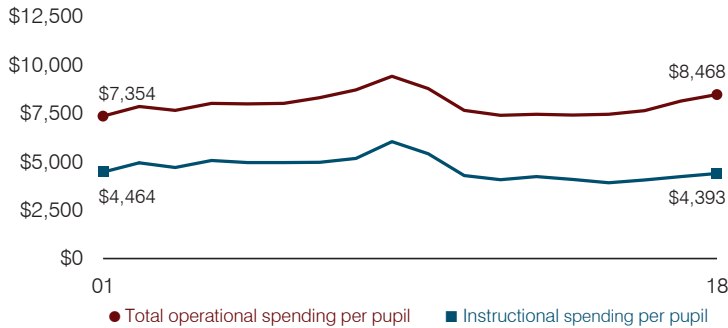
Students attending



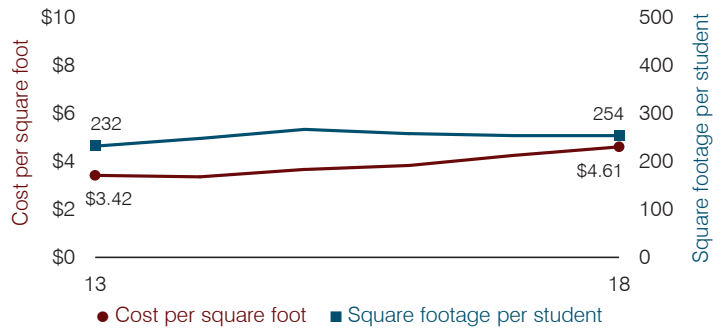
Administrative cost per pupil



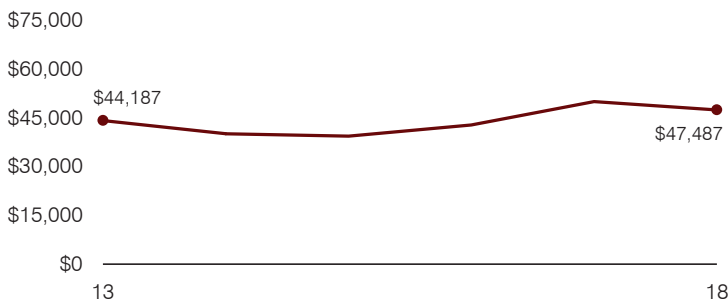
Total operational and instructional spending per pupil (inflation adjusted to 2018 dollars)



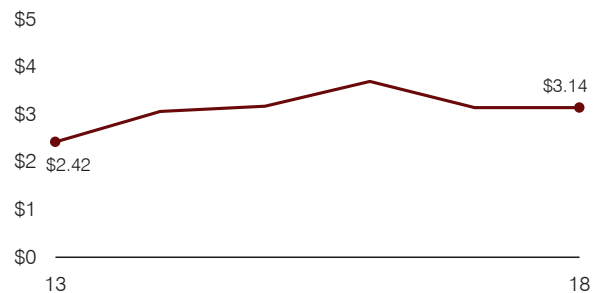
Plant cost per square foot and square footage per student



Average teacher salary



Food service cost per meal



Financial stress assessment

Overall financial stress level: **Low**

Measure: 2016 through 2018	Assessment
Change in number of district students	Steady
Spending exceeded operating/capital budgets	Capital
Spending increase election results	Voter-approved
Operating reserve percentage, Trend	Impact Aid Fund reserve
Years of capital reserve held	Impact Aid Fund reserve
Current financial and internal control status	Marginally compliant

Low
Moderate
High

Transportation costs per mile and per rider

