

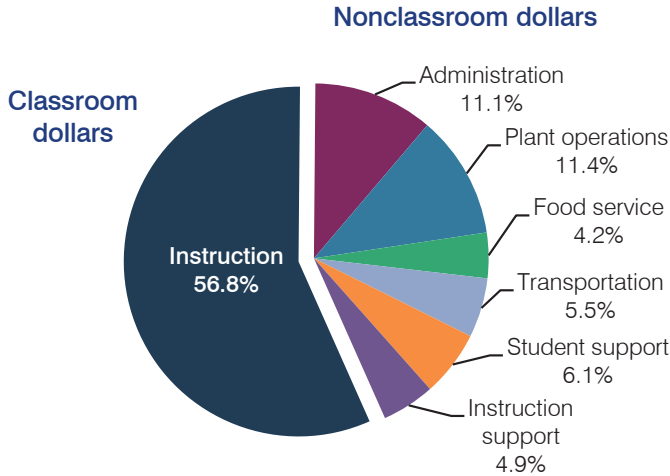
# Blue Ridge Unified School District

Navajo County  
 Efficiency peer groups 4 and T-8, Achievement peer group 5  
 Legislative district(s): 7

District size, location: Medium-Large, Town  
 Students attending: 2,209  
 Number of schools: 4

## OPERATIONAL EFFICIENCY

### Spending by operational area



### 5-year spending trend

Total spending per pupil decreased by 7 percent. Spending in the classroom varied year to year, decreasing overall from 59.3 to 56.8 percent. Spending on instruction support increased substantially. Overall, spending on student support increased slightly. Spending on other nonclassroom areas varied year to year.

### Cost measures relative to peer averages

Operational area	Measure	District	Peer average	State average
Administration	Cost per pupil	\$768	\$764	\$746
	Students per administrator	92	67	67
Plant operations	Cost per square foot	\$3.42	\$5.34	\$6.03
	Square footage per student	232	176	153
Food service	Cost per meal equivalent	\$2.42	\$2.67	\$2.58
Transportation	Cost per mile	\$2.76	\$2.52	\$3.55
	Cost per rider	\$917	\$797	\$1,015

Very low Low Comparable High Very high

### Per pupil spending by operational area

	District		Peer average	State average	National average
	2012	2013	2013	2013	2011
<b>Total</b>	<b>\$6,786</b>	<b>\$6,950</b>	<b>\$7,187</b>	<b>\$7,496</b>	<b>\$10,658</b>
<b>Classroom dollars</b>	<b>3,733</b>	<b>3,951</b>	<b>3,779</b>	<b>4,031</b>	<b>6,520</b>
<b>Nonclassroom dollars:</b>	<b>3,053</b>	<b>2,999</b>	<b>3,408</b>	<b>3,465</b>	<b>4,138</b>
Administration	808	768	764	746	1,138
Plant operations	893	792	921	924	1,015
Food service	262	291	364	396	412
Transportation	384	384	394	369	452
Student support	441	427	561	582	593
Instruction support	265	337	404	448	528

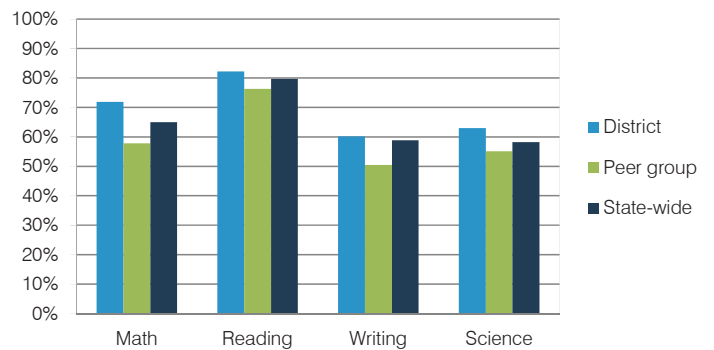
## STUDENT ACHIEVEMENT, TEACHER MEASURES, AND FINANCIAL ASSESSMENT

### ADE-reported district and school letter grades

District grade: **B**

Grade	Number of schools	Percentage of schools
A	1	25%
B	3	75%
C	0	0%
D	0	0%
F	0	0%
Not rated	0	0%

### Students who met state standards (AIMS)



### Student and teacher measures

Measure	District	Peer average	State average
Attendance rate	92%	94%	94%
Graduation rate (2012)	77%	83%	77%
Poverty rate (2012)	25%	24%	25%
Students per teacher	18.4	16.6	18.3
Average teacher salary	\$44,187	\$41,866	\$45,264
Amount from Proposition 301	\$4,077	\$4,192	\$3,784
Average years of teacher experience	16.3	11.7	10.9
Percentage of teachers in first 3 years	2%	16%	19%

### Financial stress assessment

Overall financial stress level: **High**

Measure: 2011 through 2013	Assessment
Number of students attending district	Moderate decrease
Spending exceeded operating/capital budgets	Capital only
Spending increase election results	Voter-rejected
Operating reserve percentage (max. 4%), trend	1.3%, Decreasing
Years of capital reserve held	1 to 3 years
Current financial and internal control status	Compliant

