

# Blue Ridge Unified School District

Navajo County  
Operational peer group: D  
Legislative districts: 5

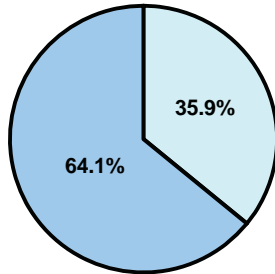
District size: Medium-Large  
Students attending: 2,593  
Number of schools: 5

## OPERATIONAL EFFICIENCY

### Average per-pupil spending

District  
State

Classroom  
\$5,222  
\$4,497



Nonclassroom  
\$2,920  
\$3,411

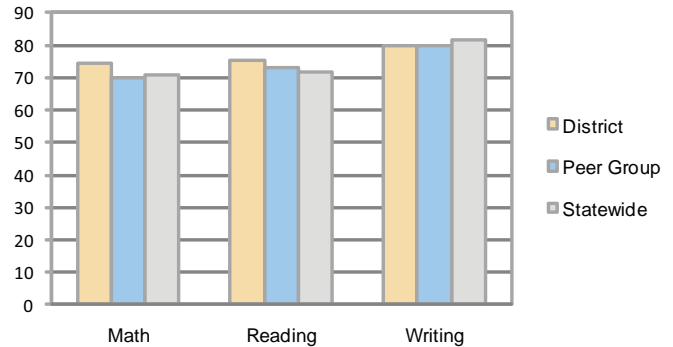
Total  
\$8,142  
\$7,908

### 5-year trend

Total spending per pupil increased by 35 percent. Spending in the classroom varied year to year and increased overall from 63.1 to 64.1 percent. Spending on plant operations and food service decreased, while spending in other nonclassroom areas remained fairly stable.

## STUDENT ACHIEVEMENT AND TEACHER INFORMATION

### Percentage of students meeting state standards (AIMS)



### Adequate Yearly Progress (AYP) toward federal goals

5 schools met all applicable AYP objectives for NCLB.

### District's cost measures relative to peer group

Operational Area	Measure	District	Peer Average	State Average
Administration	Cost per pupil	\$835	\$775	\$729
	Students per administrator	65	61	66
Plant Operations	Cost per square foot	\$5.66	\$6.13	\$6.40
	Square footage per student	144	168	144
Food Service	Cost per meal equivalent	\$3.05	\$2.64	\$2.53
Transportation	Cost per mile	\$2.36	\$2.96	\$3.36
	Miles per rider	358	307	271

Very Low Low Comparable High Very High

### Student and teacher information

Measure	District	Peer average	State average
Attendance rate	92%	94%	95%
Graduation rate (2008)	79%	73%	75%
Poverty rate	18%	15%	19%
Student/teacher ratio	16.9	17.2	17.1
Average teacher salary	\$44,093	\$42,175	\$45,209
Average years' experience	13.3	8.4	8.3
Percent of teachers in first 3 years	17%	34%	16%

### Proposition 301

#### Teacher pay

On average, each teacher earned \$5,034 in additional salary, and each librarian, counselor, and psychologist earned between \$1,240 and \$11,860 in additional salary.

#### Performance pay plan goals and results

Type of goal	Goal met?
Student achievement	▲
Dropout/ graduation rates	■
Student attendance	■
Parent/student satisfaction	■
Teacher attendance	■
Teacher professional development	■
Teacher evaluations	■
Tutoring	■
Other	■

■ = yes, □ = no, and ▲ = partially

### Per-pupil spending by function

	District		Peer	State	National
	2008	2009	2009	2009	2007
<b>Total</b>	<b>\$7,437</b>	<b>\$8,142</b>	<b>\$7,896</b>	<b>\$7,908</b>	<b>\$9,683</b>
<b>Classroom dollars</b>	<b>\$4,408</b>	<b>\$5,222</b>	<b>\$4,312</b>	<b>\$4,497</b>	<b>\$5,903</b>
<b>Nonclassroom dollars:</b>	<b>\$3,029</b>	<b>\$2,920</b>	<b>\$3,584</b>	<b>\$3,411</b>	<b>\$3,780</b>
Administration	861	835	775	729	1,050
Plant Operations	855	815	1,032	920	951
Food Service	285	275	365	382	369
Transportation	405	372	397	343	406
Student Support	404	396	629	594	512
Instruction Support	219	227	380	431	470
Other	0	0	6	12	22