

Bonita Elementary School District

Graham County
Operational peer group: L
Legislative districts: 5

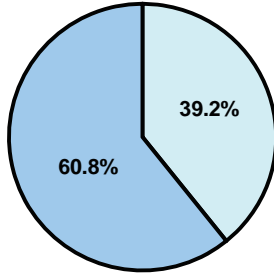
District size: Very Small
Students attending: 104
Number of schools: 1

OPERATIONAL EFFICIENCY

Average per-pupil spending

District
State

Classroom
\$9,004
\$4,497



Nonclassroom
\$5,811
\$3,411

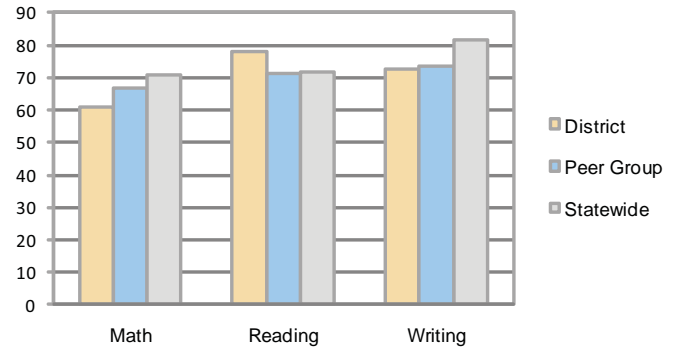
Total
\$14,815
\$7,908

5-year trend

Total spending per pupil increased by 20 percent. Spending in the classroom varied year to year and decreased significantly overall from 63.4 to 60.8 percent. Spending in all nonclassroom areas was very inconsistent from year to year.

STUDENT ACHIEVEMENT AND TEACHER INFORMATION

Percentage of students meeting state standards (AIMS)



Adequate Yearly Progress (AYP) toward federal goals

The District's school met all applicable AYP objectives for NCLB.

District's cost measures relative to peer group

Operational Area	Measure	District	Peer Average	State Average
Administration	Cost per pupil	\$2,856	\$2,656	\$729
	Students per administrator	35	32	66
Plant Operations	Cost per square foot	\$6.35	\$7.53	\$6.40
	Square footage per student	225	318	144
Food Service	Cost per meal equivalent	\$5.15	\$5.10	\$2.53
Transportation	Cost per mile	\$1.33	\$1.79	\$3.36
	Miles per rider	483	710	271

Very Low Low Comparable High Very High

Student and teacher information

Measure	District	Peer average	State average
Attendance rate	95%	94%	95%
Graduation rate (2008)	N/A	54%	75%
Poverty rate	21%	31%	19%
Student/teacher ratio	8.6	10.8	17.1
Average teacher salary	\$47,075	\$45,165	\$45,209
Average years' experience	17.3	12.7	8.3
Percent of teachers in first 3 years	0%	15%	16%

Proposition 301

Teacher pay

On average, each teacher earned \$3,018 in additional salary, and each instructional aide earned an additional \$831.

Performance pay plan goals and results

Type of goal	Goal met?
Student achievement	■
Dropout/ graduation rates	
Student attendance	■
Parent/student satisfaction	
Teacher attendance	
Teacher professional development	
Teacher evaluations	
Tutoring	
Other	■

■ = yes, □ = no, and ▮ = partially

Per-pupil spending by function

	District		Peer	State	National
	2008	2009	2009	2009	2007
Total	\$14,561	\$14,815	\$16,311	\$7,908	\$9,683
Classroom dollars	\$8,736	\$9,004	\$8,757	\$4,497	\$5,903
Nonclassroom dollars:	\$5,825	\$5,811	\$7,554	\$3,411	\$3,780
Administration	2,395	2,856	2,656	729	1,050
Plant Operations	1,508	1,427	2,297	920	951
Food Service	619	715	859	382	369
Transportation	807	650	930	343	406
Student Support	109	99	474	594	512
Instruction Support	387	64	338	431	470
Other	0	0	0	12	22