

Classroom Dollars and Proposition 301 Results

Bonita Elementary School District

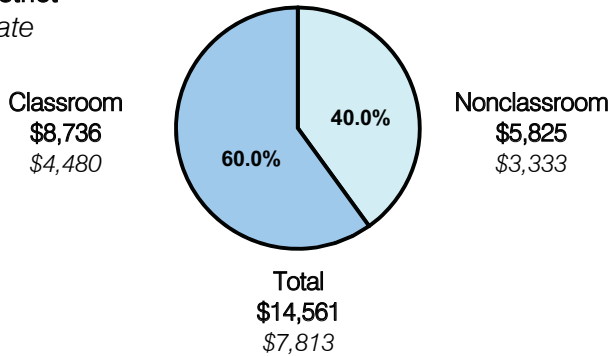
Graham County

District size: Very Small
 Students attending: 100
 Number of schools: 1
 Number of certified teachers: 11

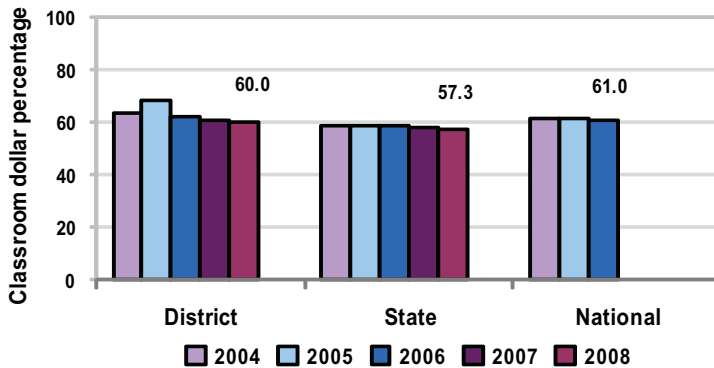
Classroom Dollars

Fiscal year 2008 averages per pupil

District
 State



5-year comparison



Expenditures by function

	District					State 2008	National 2006
	2004	2005	2006	2007	2008		
Classroom dollars	63.4	68.1	62.1	60.5	60.0	57.3	61.0
Nonclassroom dollars:							
Administration	15.5	12.3	15.2	17.7	16.4	9.2	10.8
Plant operations	11.4	10.0	10.5	10.4	10.4	11.3	9.9
Food service			2.8	4.6	4.2	4.8	3.8
Transportation	2.7	4.4	5.1	4.3	5.5	4.4	4.2
Student support	1.9	2.5	1.5	0.3	0.8	7.4	5.2
Instruction support	5.1	2.7	2.8	2.2	2.7	5.4	4.9
Other						0.2	0.2

Comparative Information

	District			State 2008
	2006	2007	2008	
Student/teacher ratio	9.1	9.7	9.1	17.3
Average teacher salary	\$38,776	\$42,934	\$46,027	\$44,967
Average years' experience	12.7	13.2	13.9	8.1

Classroom dollar ranking: 37 of 230 districts.

Proposition 301

District-reported 2008 results

Teacher pay

- On average, each teacher earned an additional \$3,402 in salary, and each instructional aide earned an additional \$1,564.

Performance

- The District accomplished its goals, which were the same as the prior fiscal year's goals and were based on district and school performance.
- Based on pre- and post-test scores, at least 75 percent of students made academic progress in reading, math, and writing.
- Teacher-created curriculum maps were used to document assessment of Arizona State Standards.
- Teachers implemented a student attendance incentive program and contacted each student's parents at least once each grading period to give positive feedback.

Menu

- Monies were used solely to increase eligible employee compensation.