

Classroom Dollars and Proposition 301 Results

Bonita Elementary School District

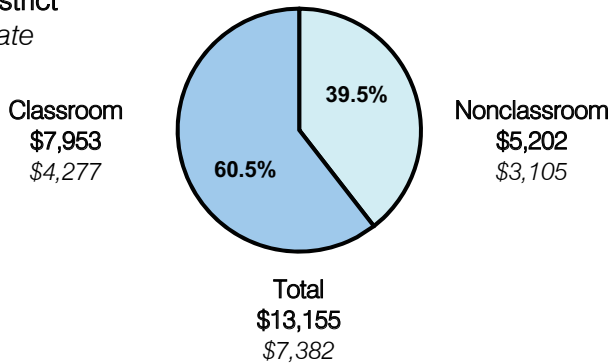
Graham County

District size: Very Small
 Students attending: 97
 Number of schools: 1
 Number of certified teachers: 10

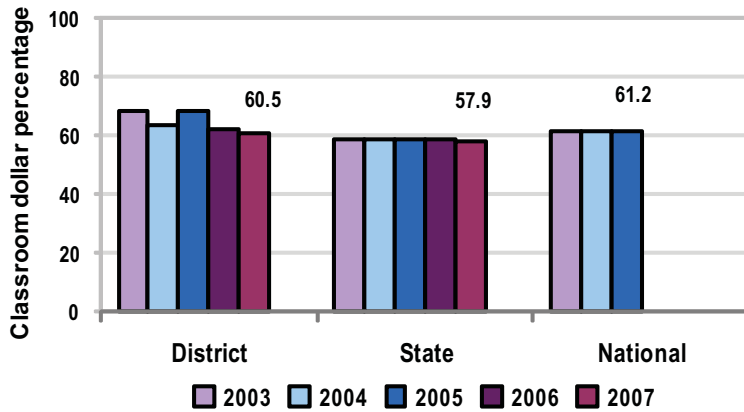
Classroom Dollars

Fiscal year 2007 averages per pupil

District
 State



5-year comparison



Expenditures by function

	Percentage					State 2007	National 2005
	District						
	2003	2004	2005	2006	2007		
Classroom dollars	68.2	63.4	68.1	62.1	60.5	57.9	61.2
Nonclassroom dollars:							
Administration	15.2	15.5	12.3	15.2	17.7	9.5	11.0
Plant operations	10.5	11.4	10.0	10.5	10.4	11.3	9.6
Food service				2.8	4.6	4.7	3.9
Transportation	2.1	2.7	4.4	5.1	4.3	4.3	4.1
Student support	3.3	1.9	2.5	1.5	0.3	7.3	5.2
Instruction support	0.7	5.1	2.7	2.8	2.2	4.8	4.8
Other						0.2	0.2

Comparative Information

	District			State 2007
	2005	2006	2007	
Student/teacher ratio	9.4	9.1	9.7	17.4
Average teacher salary	\$32,943	\$38,776	\$42,934	\$43,833
Average years' experience	12.4	12.7	13.2	8.1

Classroom dollar ranking: 33 of 229 districts.

Proposition 301

District-reported 2007 results

Teacher pay

- On average, each teacher earned an additional \$2,949 in salary, and each instructional aide received an additional \$837.

Performance

- The District accomplished its goals, which were similar to the prior fiscal year's goals and were based on district and school performance.
- Based on pre- and post-test scores, at least 75 percent of students made academic progress in reading, math, and writing.
- Teacher-created curriculum maps were used to document assessment of Arizona State Standards.
- Teachers implemented a student attendance incentive program and contacted each student's parents at least once each grading period to give positive feedback.

Menu

- Monies were used solely to increase eligible employee compensation.