

Classroom Dollars and Proposition 301 Results

Bouse Elementary School District

La Paz County

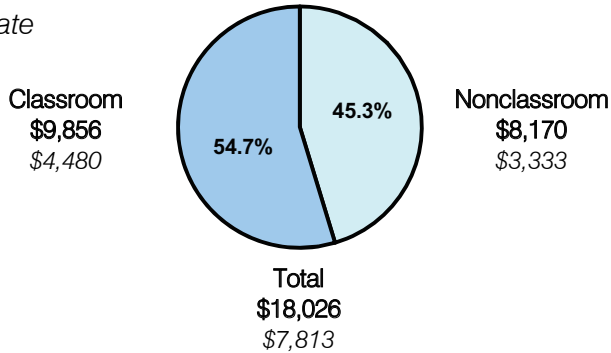
District size: Very Small
 Students attending: 45
 Number of schools: 1
 Number of certified teachers: 6

Classroom Dollars

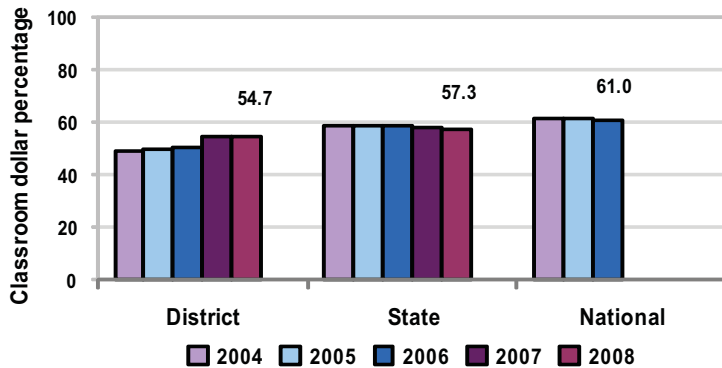
Fiscal year 2008 averages per pupil

District

State



5-year comparison



Expenditures by function

	District					State 2008	National 2006
	2004	2005	2006	2007	2008		
Classroom dollars	49.1	49.6	50.5	54.4	54.7	57.3	61.0
Nonclassroom dollars:							
Administration	24.0	21.7	21.7	16.7	16.7	9.2	10.8
Plant operations	9.9	11.6	11.1	10.5	12.9	11.3	9.9
Food service	8.0	9.6	10.3	11.1	7.6	4.8	3.8
Transportation	3.5	3.3	3.7	3.8	4.1	4.4	4.2
Student support	5.5	3.7	2.4	0.7	3.1	7.4	5.2
Instruction support		0.5	0.3	2.8	0.9	5.4	4.9
Other						0.2	0.2

Comparative Information

	District			State 2008
	2006	2007	2008	
Student/teacher ratio	9.7	7.9	7.6	17.3
Average teacher salary	\$29,047	\$34,352	\$41,050	\$44,967
Average years' experience	8.0	8.2	9.8	8.1

Classroom dollar ranking: 125 of 230 districts.

Proposition 301

District-reported 2008 results

Teacher pay

- On average, each teacher earned an additional \$2,640 in salary, and each instructional aide earned an additional \$332.

Performance

- The District accomplished its goals, which were similar to the prior fiscal year's goals and were based on school and individual performance.
- Teachers attended a minimum of 1 professional development activity monthly.
- Teachers received acceptable performance evaluations.
- Other goals were linked to teachers developing professional goals, documenting their progress in completing the goals, and maintaining documentation of contacts with parents.

Menu

- Monies were used to compensate teachers for AIMS tutoring activities and completing a CPR class.
- Monies were also used to pay for a substitute teacher while a teacher attended a professional development math program for 1 week.
- A bus driver was compensated for transporting students to and from AIMS intervention activities.