

# Classroom Dollars and Proposition 301 Results

## Bouse Elementary School District

La Paz County

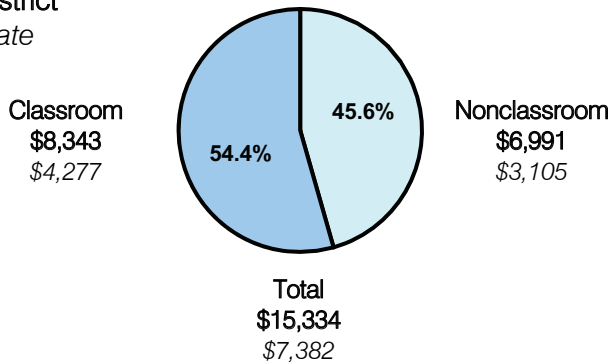
District size: Very Small  
 Students attending: 47  
 Number of schools: 1  
 Number of certified teachers: 6

### Classroom Dollars

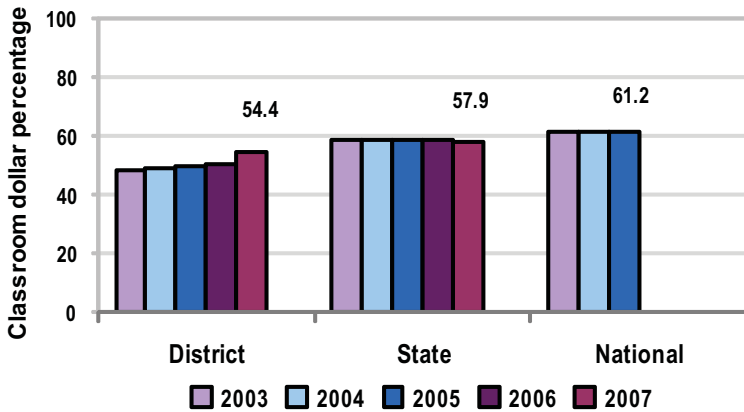
Fiscal year 2007 averages per pupil

District

State



5-year comparison



Expenditures by function

	District					State 2007	National 2005
	2003	2004	2005	2006	2007		
Classroom dollars	48.2	49.1	49.6	50.5	54.4	57.9	61.2
Nonclassroom dollars:							
Administration	26.3	24.0	21.7	21.7	16.7	9.5	11.0
Plant operations	7.7	9.9	11.6	11.1	10.5	11.3	9.6
Food service	8.6	8.0	9.6	10.3	11.1	4.7	3.9
Transportation	4.5	3.5	3.3	3.7	3.8	4.3	4.1
Student support	1.8	5.5	3.7	2.4	0.7	7.3	5.2
Instruction support	2.9		0.5	0.3	2.8	4.8	4.8
Other						0.2	0.2

### Comparative Information

	District			State
	2005	2006	2007	2007
Student/teacher ratio	8.7	9.7	7.9	17.4
Average teacher salary	\$31,117	\$29,047	\$34,352	\$43,833
Average years' experience	8.3	8.0	8.2	8.1

Classroom dollar ranking: 125 of 229 districts.

### Proposition 301

#### District-reported 2007 results

##### Teacher pay

- On average, each teacher earned an additional \$1,746 in salary, and each instructional aide earned an additional \$248.

##### Performance

- The District accomplished its goals, which were similar to the prior fiscal year's goals and were based on school and individual performance.
- Teachers attended a minimum of 1 monthly in-service training, received acceptable performance evaluations, developed professional goals and documented their progress in completing the goals, and maintained logs of contacts with parents.

##### Menu

- Monies were used to pay for qualified evaluator training for the District's head teacher/administrator and to pay 5 teachers for attending math training.