

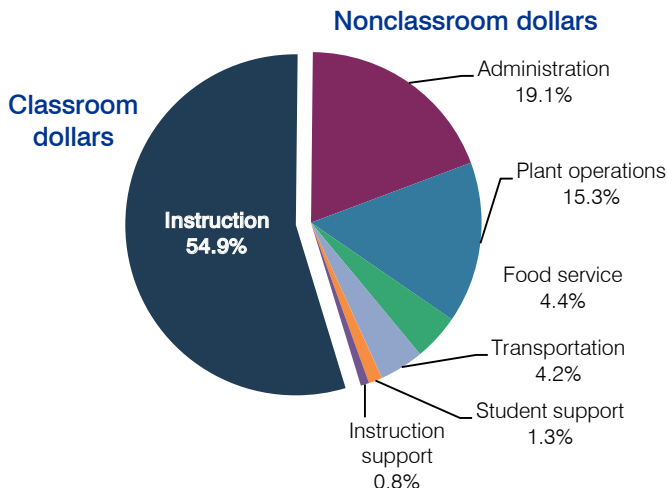
# Bowie Unified School District

Cochise County  
 Efficiency peer groups 11 and T-13, Achievement peer group 6  
 Legislative district(s): 14

District size / location: Very small, Rural  
 Students attending: 75  
 Number of schools: 2

## OPERATIONAL EFFICIENCY

### Spending by operational area



### 5-year spending trend

Student enrollment decreased by 18 percent, which contributed to the 33 percent increase in total spending per pupil. Spending in the classroom varied year to year, decreasing overall from 56.4 to 54.9 percent. Spending on most nonclassroom areas also varied year to year, as is common for very small districts. Overall, spending on plant operations increased.

### Cost measures relative to peer averages

Operational area	Measure	District	Peer average	State average
Administration	Cost per pupil	\$4,135	\$2,472	\$736
	Students per administrator	17	30	66
Plant operations	Cost per square foot	\$5.42	\$6.93	\$6.09
	Square footage per student	612	320	152
Food service	Cost per meal equivalent	\$5.85	\$4.88	\$2.47
Transportation	Cost per mile	\$1.53	\$1.53	\$3.50
	Cost per rider	\$1,320	\$1,171	\$982

### Per-pupil spending by operational area

	District		Peer average	State average	National average
	2011	2012	2012	2012	2010
<b>Total</b>	<b>\$20,227</b>	<b>\$21,604</b>	<b>\$15,082</b>	<b>\$7,475</b>	<b>\$10,652</b>
<b>Classroom dollars</b>	<b>10,530</b>	<b>11,858</b>	<b>7,880</b>	<b>4,053</b>	<b>6,526</b>
<b>Nonclassroom dollars:</b>	<b>9,697</b>	<b>9,746</b>	<b>7,202</b>	<b>3,422</b>	<b>4,126</b>
Administration	3,709	4,135	2,472	736	1,139
Plant operations	3,370	3,317	2,126	928	1,012
Food service	1,023	945	756	382	405
Transportation	832	902	970	362	443
Student support	371	282	541	578	592
Instruction support	392	165	337	436	535

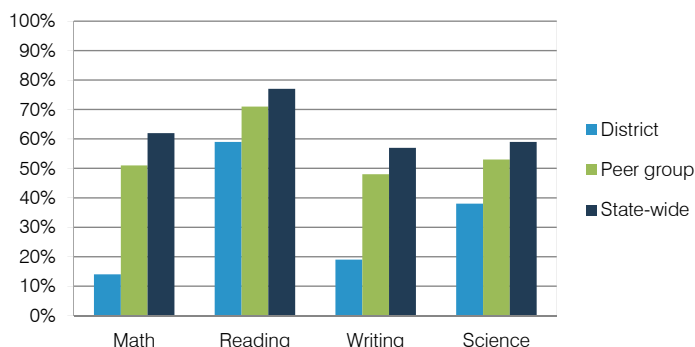
## STUDENT ACHIEVEMENT, TEACHER MEASURES, AND FINANCIAL ASSESSMENT

### ADE-reported district and school letter grades

District grade: **D**

Grade	Number of schools	Percentage of schools
A	0	0%
B	0	0%
C	1	50%
D	1	50%
F	0	0%
Not rated	0	0%

### Percentage of students who met state standards (AIMS)



### Student and teacher measures

Measure	District	Peer average	State average
Attendance rate	96%	94%	94%
Graduation rate (2011)	86%	80%	78%
Poverty rate (2011)	32%	31%	25%
Students per teacher	5.9	15.2	18.1
Average teacher salary	\$37,905	\$40,242	\$45,193
Amount from Proposition 301	\$1,708	\$3,191	\$3,195
Average years of teacher experience	10.9	12.0	11.0
Percentage of teachers in first 3 years	32%	16%	16%

### Financial stress assessment

Overall financial stress level: **Low**

Measure: 2010 through 2012	Assessment
Number of students attending	Small school adjustment
Spending exceeded operating/capital budgets	Capital only
Spending increase election results	No election held
Operating reserve percentage (max. 4%), trend	4.0%, Steady
Years of capital reserve held	More than 3 years
Current financial and internal control status	Compliant

