

Buckeye Elementary School District

Maricopa County
Operational peer group: J
Legislative districts: 4, 12, 25

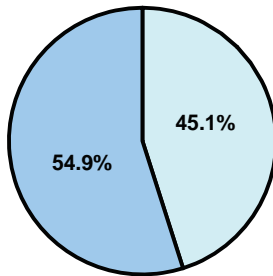
District size: Medium-Large
Students attending: 4,244
Number of schools: 6

OPERATIONAL EFFICIENCY

Average per-pupil spending

District
State

Classroom
\$3,516
\$4,497



Nonclassroom
\$2,886
\$3,411

Total
\$6,402
\$7,908

5-year trend

Student enrollment tripled, which contributed to the relatively small (5 percent) increase in total spending per pupil. Spending in the classroom was very inconsistent year to year and decreased significantly overall from 57.9 to 54.9 percent. Spending on food service, student support, and instruction support increased, while spending in other nonclassroom areas varied year to year.

District's cost measures relative to peer group

Operational Area	Measure	District	Peer Average	State Average
Administration	Cost per pupil	\$758	\$921	\$729
	Students per administrator	85	64	66
Plant Operations	Cost per square foot	\$6.33	\$6.71	\$6.40
	Square footage per student	104	125	144
Food Service	Cost per meal equivalent	\$2.89	\$2.56	\$2.53
Transportation	Cost per mile	\$3.17	\$3.04	\$3.36
	Miles per rider	154	145	271

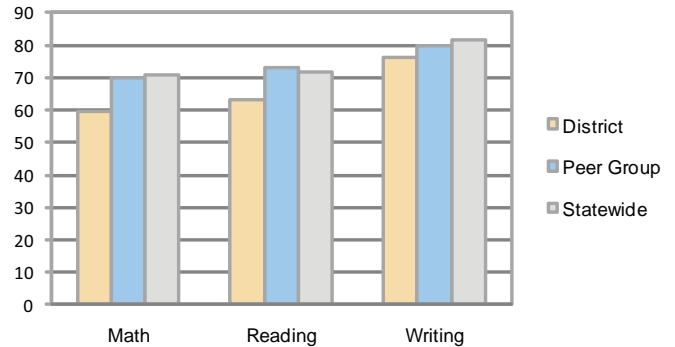
Very Low Low Comparable High Very High

Per-pupil spending by function

	District		Peer	State	National
	2008	2009	2009	2009	2007
Total	\$6,298	\$6,402	\$7,752	\$7,908	\$9,683
Classroom dollars	\$3,832	\$3,516	\$4,151	\$4,497	\$5,903
Nonclassroom dollars:	\$2,466	\$2,886	\$3,601	\$3,411	\$3,780
Administration	674	758	921	729	1,050
Plant Operations	561	657	879	920	951
Food Service	411	434	524	382	369
Transportation	163	182	410	343	406
Student Support	301	422	483	594	512
Instruction Support	356	433	384	431	470
Other	0	0	0	12	22

STUDENT ACHIEVEMENT AND TEACHER INFORMATION

Percentage of students meeting state standards (AIMS)



Adequate Yearly Progress (AYP) toward federal goals

4 schools met all applicable AYP objectives for NCLB. 2 failed to meet the percentage of students tested objective.

Student and teacher information

Measure	District	Peer average	State average
Attendance rate	94%	94%	95%
Graduation rate (2008)	N/A	73%	75%
Poverty rate	15%	15%	19%
Student/teacher ratio	18.6	17.2	17.1
Average teacher salary	\$40,567	\$42,175	\$45,209
Average years' experience	5.5	8.4	8.3
Percent of teachers in first 3 years	50%	34%	16%

Proposition 301

Teacher pay

On average, each teacher and speech pathologist earned between \$3,533 and \$3,551 in additional salary.

Performance pay plan goals and results

Type of goal	Goal met?
Student achievement	■
Dropout/ graduation rates	
Student attendance	
Parent/student satisfaction	
Teacher attendance	
Teacher professional development	■
Teacher evaluations	
Tutoring	
Other	■

■ = yes, □ = no, and ▴ = partially