

# Buckeye Union High School District

Maricopa County

Efficiency peer groups 3 and T-5, Achievement peer group 8

Legislative district(s): 4 and 13

District size, location: Medium-large, Suburb

Students attending<sup>1</sup>:

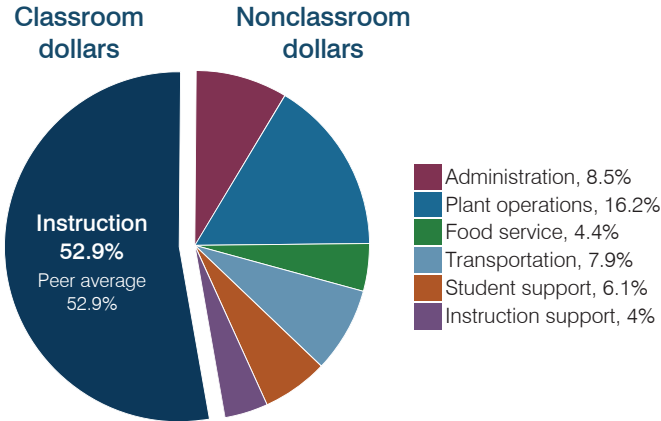
3,868

Number of schools:

3

## OPERATIONAL EFFICIENCY

### Spending by operational area



### Efficiency measures relative to peer averages

Operational area	Measure	District	Peer average	State average
Administration	Cost per pupil	\$705	\$846	\$806
	Students per administrative position	70	69	67
Plant operations	Cost per square foot	\$6.60	\$5.78	\$6.10
	Square footage per student	203	163	154
Food service	Cost per meal	\$2.81	\$2.98	\$2.81
Transportation	Cost per mile	\$2.92	\$3.76	\$3.72
	Cost per rider	\$1,445	\$1,462	\$1,092

Very low   Low   Comparable   High   Very high

### Per pupil spending

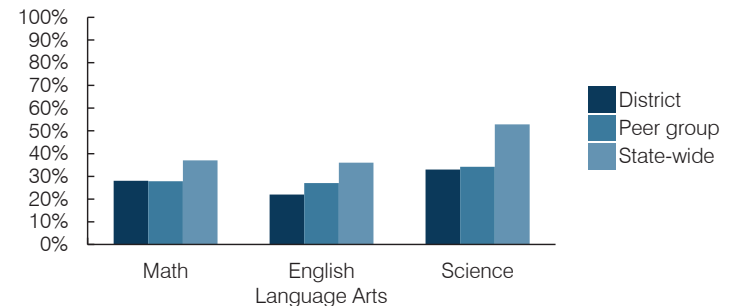
Spending by area	District		Peer average 2016	State average 2016
	2015	2016		
Instruction	\$ 4,079	\$ 4,376	\$ 3,774	\$ 4,145
Administration	715	705	846	806
Plant operations	1,252	1,340	923	939
Food service	356	365	314	415
Transportation	573	651	382	364
Student support	400	505	605	633
Instruction support	321	328	296	444
<b>Total operational</b>	<b>\$ 7,696</b>	<b>\$ 8,270</b>	<b>\$ 7,140</b>	<b>\$ 7,746</b>
Land and buildings	\$ 1,942	\$ 4,023	\$ 704	\$ 621
Equipment	3,064	766	259	400
Interest	502	773	191	216
Other	59	70	164	153
<b>Total nonoperational</b>	<b>\$ 5,567</b>	<b>\$ 5,632</b>	<b>\$ 1,318</b>	<b>\$ 1,390</b>
<b>Total per pupil spending</b>	<b>\$ 13,263</b>	<b>\$ 13,902</b>	<b>\$ 8,458</b>	<b>\$ 9,136</b>

## STUDENT AND TEACHER MEASURES, FINANCIAL ASSESSMENT, AND REVENUES

### Student and teacher measures

Measure	District	Peer average	State average
Attendance rate (2015)	95%	94%	94%
Graduation rate (2015)	91%	86%	78%
Poverty rate (2015)	16%	17%	23%
Students per teacher	21.0	22.0	18.6
Average teacher salary	\$49,471	\$48,898	\$46,384
Amount from Proposition 301	\$8,428	\$7,561	\$5,315
Average years of teacher experience	9.4	10.4	11.0
Percentage of teachers in first 3 years	29%	19%	20%

### Students who passed state assessments



### Financial stress assessment

Overall financial stress level: **Low**

Measure: 2014 through 2016

Measure	Assessment
Change in number of district students	Steady
Spending exceeded operating/capital budgets	No overspending
Spending increase election results	Voter-approved
Operating reserve percentage, Trend	2.7%, Decreasing
Years of capital reserve held	More than 3 years
Current financial and internal control status	Compliant

Low   Moderate   High

### Per pupil revenues

Revenues by source	District		Peer average 2016	State average 2016
	2015	2016		
Federal	\$ 729	\$ 519	\$ 823	\$ 1,301
State	3,547	2,933	3,055	3,780
Local	6,346	6,418	4,806	4,268
<b>Total revenues per pupil</b>	<b>\$ 10,622</b>	<b>\$ 9,870</b>	<b>\$ 8,684</b>	<b>\$ 9,349</b>

### Select revenues from common sources

Source	District 2016	Peer average 2016	State average 2016
Equalization formula funding	\$ 6,691	\$ 5,828	\$ 5,498
Grants	767	536	891
Donations and tax credits	97	51	135

### Select revenues from less common sources

Source	District 2016	Peer average 2016	Number of peers receiving
Desegregation	\$ 0	\$ 0	1 of 15
Small school adjustment	0	0	0 of 15
Federal impact aid	0	0	3 of 15
Voter-approved levy increases	1,998	1,941	14 of 15

<sup>1</sup> District is working with the Arizona Department of Education to resolve student count discrepancy. See Appendix B, page b-5.

## Classroom dollar percentage

Year:	2001	2002	2003	2004	2005	2006	2007	2008	2009	2010	2011	2012	2013	2014	2015	2016
Percentage:	48.3	51.2	52.1	54.2	52.1	51.7	55.6	55.5	56.8	53.8	53.5	53.3	51.9	52.0	53.0	52.9

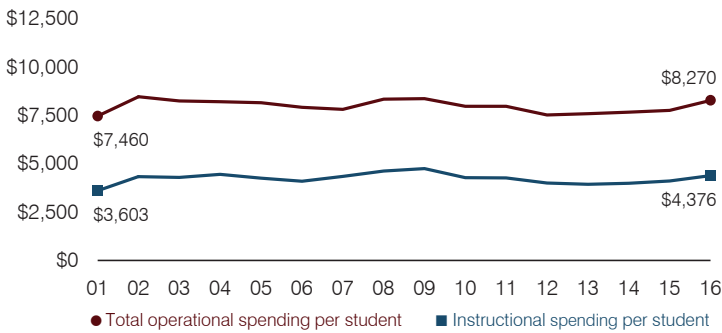
## OPERATIONAL TRENDS

Fiscal years as indicated

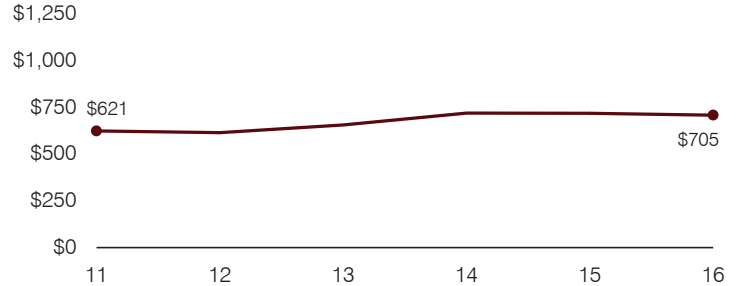
### 5-year spending trend (2011 through 2016)

Total operational spending per pupil, adjusted for inflation, increased by 4 percent. The percentage of dollars spent in the classroom varied year to year, decreasing overall from 53.5 to 52.9 percent. Overall, as a percentage of total operational spending, plant operations, transportation, and student support increased slightly. Instruction support decreased and food service decreased slightly.

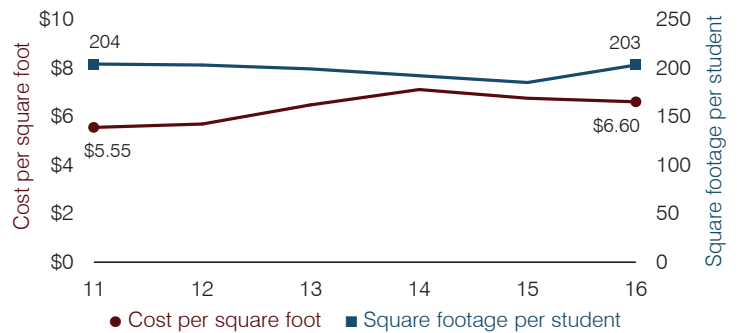
### Total operational and instructional spending per pupil (inflation adjusted to 2016 dollars)



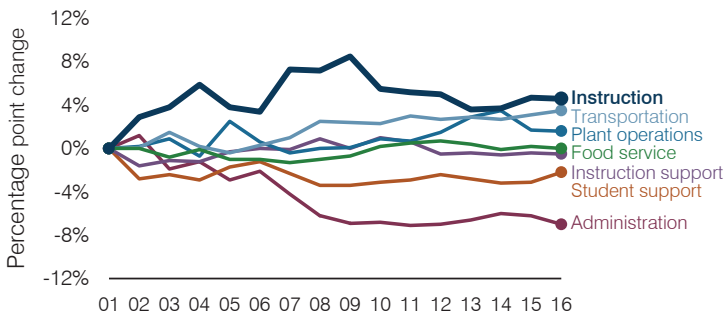
### Administrative cost per pupil



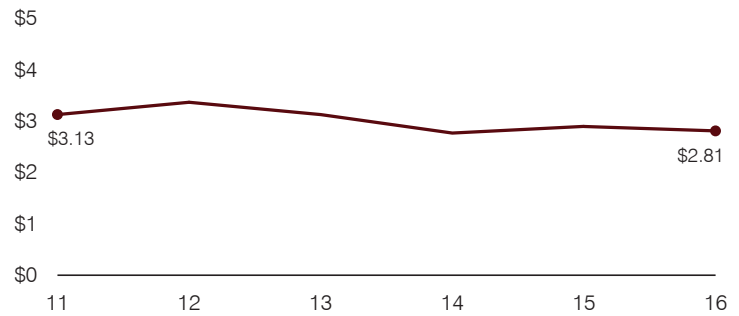
### Plant cost per square foot and square footage per student



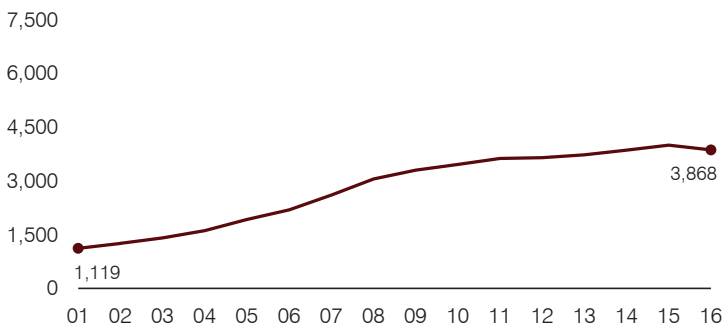
### Changes in operational spending percentages



### Food service cost per meal



### Students attending



### Transportation costs per mile and per rider

