

# Buckeye Union High School District

Maricopa County  
Operational peer group: D  
Legislative districts: 4, 12, 25

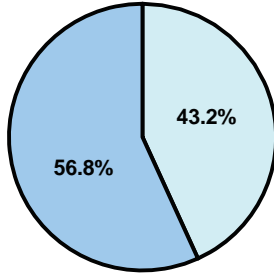
District size: Medium-Large  
Students attending: 3,301  
Number of schools: 4

## OPERATIONAL EFFICIENCY

### Average per-pupil spending

District  
State

Classroom  
**\$4,275**  
\$4,497



Nonclassroom  
**\$3,250**  
\$3,411

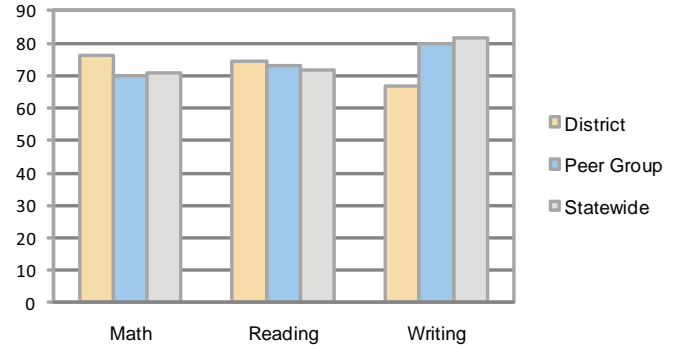
Total  
**\$7,525**  
\$7,908

### 5-year trend

Total spending per pupil increased by 17 percent. Spending in the classroom varied year to year and increased significantly overall from 54.2 to 56.8 percent. Spending on administration decreased significantly and spending on transportation increased significantly, while spending in other nonclassroom areas varied year to year.

## STUDENT ACHIEVEMENT AND TEACHER INFORMATION

### Percentage of students meeting state standards (AIMS)



### Adequate Yearly Progress (AYP) toward federal goals

3 schools met all applicable AYP objectives for NCLB. 1 has not yet received an AYP determination.

### Student and teacher information

Measure	District	Peer average	State average
Attendance rate	98%	94%	95%
Graduation rate (2008)	78%	73%	75%
Poverty rate	14%	15%	19%
Student/teacher ratio	18.9	17.2	17.1
Average teacher salary	\$43,959	\$42,175	\$45,209
Average years' experience	7.1	8.4	8.3
Percent of teachers in first 3 years	36%	34%	16%

### District's cost measures relative to peer group

Operational Area	Measure	District	Peer Average	State Average
Administration	Cost per pupil	\$644	\$775	\$729
	Students per administrator	62	61	66
Plant Operations	Cost per square foot	\$5.85	\$6.13	\$6.40
	Square footage per student	188	168	144
Food Service	Cost per meal equivalent	\$2.33	\$2.64	\$2.53
Transportation	Cost per mile	\$2.28	\$2.96	\$3.36
	Miles per rider	497	307	271

Very Low   Low   Comparable   High   Very High

### Per-pupil spending by function

	District		Peer	State	National
	2008	2009	2009	2009	2007
<b>Total</b>	<b>\$7,406</b>	<b>\$7,525</b>	<b>\$7,896</b>	<b>\$7,908</b>	<b>\$9,683</b>
<b>Classroom dollars</b>	<b>\$4,107</b>	<b>\$4,275</b>	<b>\$4,312</b>	<b>\$4,497</b>	<b>\$5,903</b>
<b>Nonclassroom dollars:</b>	<b>\$3,299</b>	<b>\$3,250</b>	<b>\$3,584</b>	<b>\$3,411</b>	<b>\$3,780</b>
Administration	687	644	775	729	1,050
Plant Operations	1,082	1,103	1,032	920	951
Food Service	250	278	365	382	369
Transportation	508	511	397	343	406
Student Support	363	372	629	594	512
Instruction Support	409	342	380	431	470
Other	0	0	6	12	22

### Proposition 301

#### Teacher pay

On average, each teacher, librarian, counselor, and teacher mentor earned between \$5,027 and \$5,546 in additional salary.

#### Performance pay plan goals and results

Type of goal	Goal met?
Student achievement	■
Dropout/ graduation rates	
Student attendance	
Parent/student satisfaction	
Teacher attendance	
Teacher professional development	■
Teacher evaluations	
Tutoring	
Other	

■ = yes, □ = no, and ▤ = partially