

Camp Verde Unified School District

Yavapai County
Peer groups: Efficiency Group 5, Achievement Group 8
Legislative district(s): 1

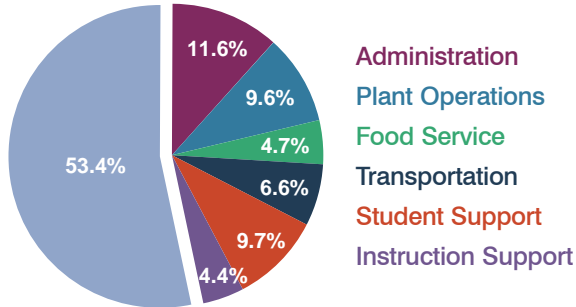
District size: Medium
Students attending: 1,389
Number of schools: 4

OPERATIONAL EFFICIENCY

Spending by operational area

Classroom dollars

Nonclassroom dollars



5-year trend

Total spending per pupil increased by 11 percent. Spending in the classroom varied year to year, decreasing slightly overall from 54.2 to 53.4 percent. Spending on administration and student support increased significantly, and spending on plant operations decreased significantly. Spending on other nonclassroom areas varied year to year.

District's cost measures relative to peer group

| Operational Area | Measure | District | Peer Average | State Average |
|------------------|----------------------------|----------|--------------|---------------|
| Administration | Cost per pupil | \$820 | \$1,104 | \$728 |
| | Students per administrator | 63 | 56 | 66 |
| Plant Operations | Cost per square foot | \$4.12 | \$4.74 | \$6.10 |
| | Square footage per student | 163 | 259 | 152 |
| Food Service | Cost per meal equivalent | \$2.72 | \$2.98 | \$2.45 |
| Transportation | Cost per mile | \$2.61 | \$2.71 | \$3.39 |
| | Miles per rider | 317 | 336 | 283 |

Very low Low Comparable High Very high

Per-pupil spending by operational area

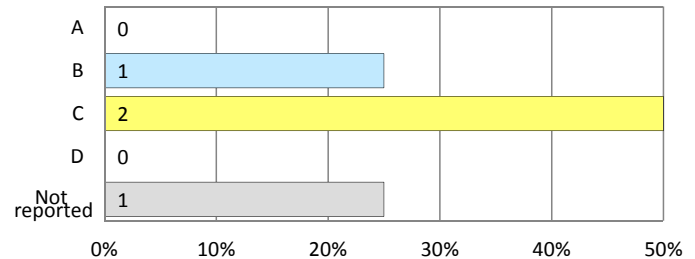
| | District | | Peer 2011 | State 2011 | National 2009 |
|------------------------------|----------------|----------------|----------------|-----------------|-----------------|
| | 2010 | 2011 | | | |
| Total | \$7,277 | \$7,037 | \$8,531 | \$7,485 | \$10,591 |
| Classroom dollars | \$3,829 | \$3,755 | \$4,298 | \$ 4,098 | \$ 6,456 |
| Nonclassroom dollars: | \$3,448 | \$3,282 | \$4,233 | \$ 3,387 | \$ 4,135 |
| Administration | 649 | 820 | 1,104 | 728 | 1,147 |
| Plant Operations | 1,030 | 674 | 1,213 | 927 | 1,033 |
| Food Service | 322 | 331 | 421 | 375 | 404 |
| Transportation | 435 | 465 | 527 | 352 | 443 |
| Student Support | 717 | 682 | 651 | 571 | 573 |
| Instruction Support | 295 | 310 | 317 | 434 | 535 |

STUDENT ACHIEVEMENT AND TEACHER INFORMATION

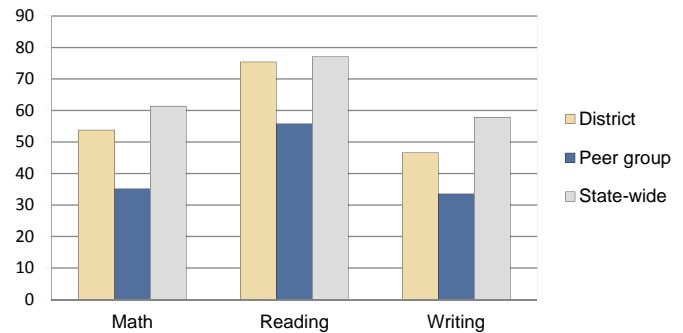
District and school letter grades

District grade: **B**

School grades (number and percentage):



Percentage of students meeting state standards (AIMS)



Student and teacher information

| Measure | District | Peer Average | State Average |
|--------------------------------------|----------|--------------|---------------|
| Attendance rate | 93% | 92% | 95% |
| Graduation rate (2010) | 84% | 68% | 78% |
| Poverty rate (2010) | 36% | 40% | 22% |
| Students per teacher | 18.0 | 15.5 | 18.1 |
| Average teacher salary | \$38,338 | \$42,449 | \$45,637 |
| Average years of experience | 9.1 | 12.2 | 10.9 |
| Percent of teachers in first 3 years | 25% | 16% | 16% |

Proposition 301 pay, goals, and results

Average additional salary earned by teachers: \$2,479

| Type of goal | Goal met? |
|----------------------------------|-----------|
| Student achievement | ▴ |
| Dropout/graduation rates | - |
| Student attendance | ■ |
| Parent/student satisfaction | - |
| Teacher attendance | - |
| Teacher professional development | - |
| Teacher evaluations | - |
| Tutoring | ■ |
| Other | - |

■ = yes, □ = no, ▴ = partially, and - = no goal set