

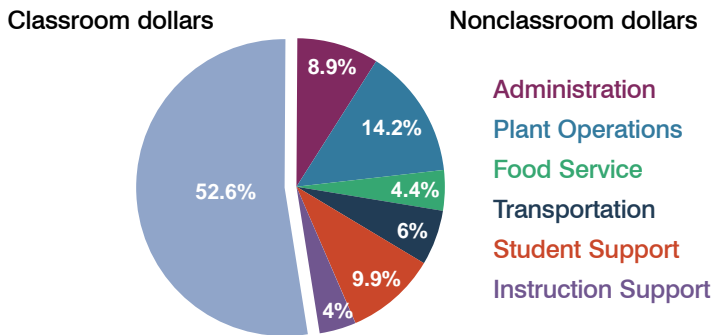
Camp Verde Unified School District

Yavapai County
Peer groups: Efficiency 5, Achievement 20
Legislative district(s): 1

District size: Medium
Students attending: 1,439
Number of schools: 4

OPERATIONAL EFFICIENCY

Spending by function

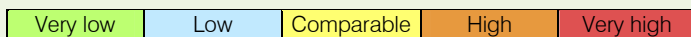


5-year trend

Total spending per pupil increased by 17 percent. Spending in the classroom varied year to year, decreasing significantly overall from 55.4 to 52.6 percent. Spending on student support increased, while spending in other nonclassroom areas remained fairly stable.

District's cost measures relative to peer group

Operational Area	Measure	District	Peer Average	State Average
Administration	Cost per pupil	\$649	\$1,060	\$721
	Students per administrator	58	54	66
Plant Operations	Cost per square foot	\$6.53	\$5.34	\$6.25
	Square footage per student	158	243	146
Food Service	Cost per meal equivalent	\$2.52	\$2.83	\$2.41
Transportation	Cost per mile	\$2.53	\$2.55	\$3.35
	Miles per rider	289	360	282

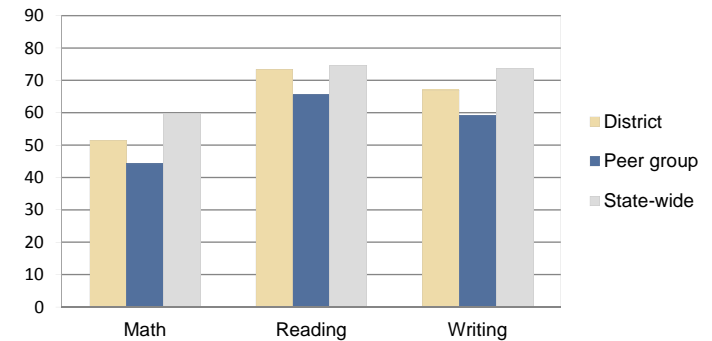


Per-pupil spending by function

	District		Peer 2010	State 2010	National 2008
	2009	2010			
Total	\$7,293	\$7,277	\$8,776	\$7,609	\$10,297
Classroom dollars	\$4,065	\$3,829	\$4,466	\$4,253	\$6,262
Nonclassroom dollars:	\$3,228	\$3,448	\$4,310	\$3,356	\$4,035
Administration	702	649	1,060	721	1,109
Plant Operations	890	1,030	1,260	914	1,003
Food Service	330	322	399	366	390
Transportation	418	435	510	342	438
Student Support	615	717	657	581	556
Instruction Support	273	295	424	432	539

STUDENT ACHIEVEMENT AND TEACHER INFORMATION

Percentage of students meeting state standards (AIMS)



Adequate Yearly Progress (AYP) toward federal goals

3 schools met all applicable AYP objectives for NCLB. 1 did not because its attendance and graduation rates were not sufficient.

Student and teacher information

Measure	District	Peer Average	State Average
Attendance rate	94%	93%	94%
Graduation rate (2009)	69%	80%	76%
Poverty rate (2009)	29%	26%	21%
Student/teacher ratio	16.7	15.4	17.9
Average teacher salary	\$38,063	\$41,299	\$47,077
Average years' experience	8.9	11.1	10.6
Percent of teachers in first 3 years	23%	20%	20%

Proposition 301

Teacher and other staff pay

On average, each teacher earned \$5,589 in additional pay, and each counselor earned \$4,135.

Performance pay plan goals and results

Type of goal	Goal met?
Student achievement	-
Dropout/graduation rates	-
Student attendance	-
Parent/student satisfaction	▴
Teacher attendance	-
Teacher professional development	▴
Teacher evaluations	-
Tutoring	▴
Other	▴

▴ = yes, □ = no, ▴ = partially, and - = no goal set