

Camp Verde Unified School District

Yavapai County
Operational peer group: E
Legislative districts: 1

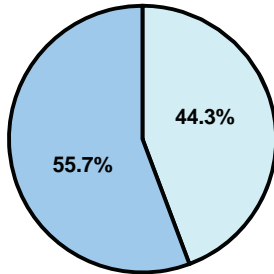
District size: Medium
Students attending: 1,453
Number of schools: 4

OPERATIONAL EFFICIENCY

Average per-pupil spending

District
State

Classroom
\$4,065
\$4,497



Nonclassroom
\$3,228
\$3,411

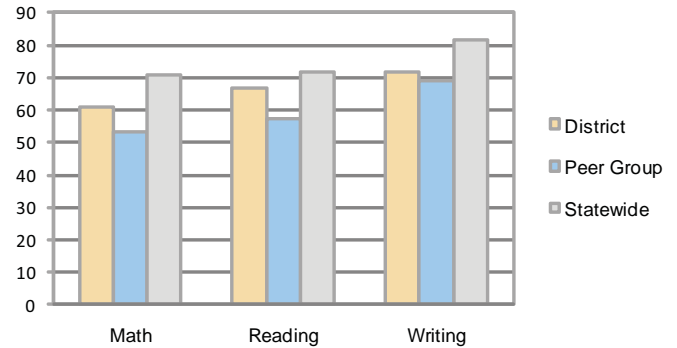
Total
\$7,293
\$7,908

5-year trend

Total spending per pupil increased by 28 percent. Spending in the classroom varied year to year and decreased overall from 56.3 to 55.7 percent. Spending on administration increased, while spending in other nonclassroom areas remained fairly stable.

STUDENT ACHIEVEMENT AND TEACHER INFORMATION

Percentage of students meeting state standards (AIMS)



Adequate Yearly Progress (AYP) toward federal goals

3 schools met all applicable AYP objectives for NCLB. 1 did not because its graduation rate was not sufficient.

Student and teacher information

Measure	District	Peer average	State average
Attendance rate	95%	93%	95%
Graduation rate (2008)	73%	70%	75%
Poverty rate	26%	31%	19%
Student/teacher ratio	16.0	14.9	17.1
Average teacher salary	\$37,054	\$41,086	\$45,209
Average years' experience	9.2	11.1	8.3
Percent of teachers in first 3 years	16%	20%	16%

District's cost measures relative to peer group

Operational Area	Measure	District	Peer Average	State Average
Administration	Cost per pupil	\$702	\$1,148	\$729
	Students per administrator	52	51	66
Plant Operations	Cost per square foot	\$5.69	\$5.49	\$6.40
	Square footage per student	156	253	144
Food Service	Cost per meal equivalent	\$2.72	\$3.07	\$2.53
Transportation	Cost per mile	\$2.44	\$2.53	\$3.36
	Miles per rider	307	359	271

Very Low Low Comparable High Very High

Proposition 301

Teacher pay

On average, each teacher and counselor earned between \$5,857 and \$6,070 in additional salary.

Performance pay plan goals and results

Type of goal	Goal met?
Student achievement	■
Dropout/ graduation rates	■
Student attendance	■
Parent/student satisfaction	■
Teacher attendance	■
Teacher professional development	▲
Teacher evaluations	■
Tutoring	■
Other	▲

■ = yes, □ = no, and ▲ = partially

Per-pupil spending by function

	District		Peer	State	National
	2008	2009	2009	2009	2007
Total	\$7,806	\$7,293	\$9,562	\$7,908	\$9,683
Classroom dollars	\$4,302	\$4,065	\$4,925	\$4,497	\$5,903
Nonclassroom dollars:	\$3,504	\$3,228	\$4,637	\$3,411	\$3,780
Administration	798	702	1,148	729	1,050
Plant Operations	1,013	890	1,379	920	951
Food Service	345	330	444	382	369
Transportation	420	418	554	343	406
Student Support	565	615	749	594	512
Instruction Support	363	273	356	431	470
Other	0	0	7	12	22