

# Classroom Dollars and Proposition 301 Results

## Camp Verde Unified School District

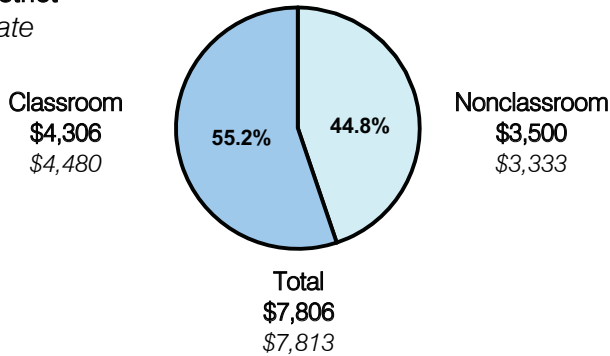
Yavapai County

District size: Medium  
 Students attending: 1,419  
 Number of schools: 4  
 Number of certified teachers: 91

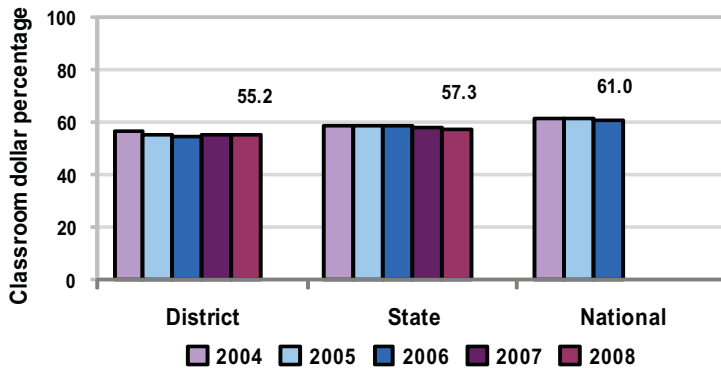
### Classroom Dollars

Fiscal year 2008 averages per pupil

District  
 State



5-year comparison



### Expenditures by function

	District					State 2008	National 2006
	2004	2005	2006	2007	2008		
Classroom dollars	56.3	55.4	54.2	55.4	55.2	57.3	61.0
Nonclassroom dollars:							
Administration	8.8	9.4	9.6	10.0	9.6	9.2	10.8
Plant operations	13.5	13.6	14.8	13.8	12.7	11.3	9.9
Food service	4.6	4.4	4.8	4.6	4.3	4.8	3.8
Transportation	5.0	5.3	5.4	5.6	5.4	4.4	4.2
Student support	8.3	8.1	7.8	7.6	8.2	7.4	5.2
Instruction support	3.5	3.8	3.4	3.0	4.6	5.4	4.9
Other						0.2	0.2

### Comparative Information

	District			State 2008
	2006	2007	2008	
Student/teacher ratio	17.7	18.3	15.6	17.3
Average teacher salary	\$36,365	\$41,039	\$38,980	\$44,967
Average years' experience	9.3	8.9	8.6	8.1

Classroom dollar ranking: 116 of 230 districts.

### Proposition 301

#### District-reported 2008 results

##### Teacher pay

- On average, each teacher and counselor earned between \$5,628 and \$5,740 in additional salary.

##### Performance

- The District accomplished most of its goals, which were similar to the prior fiscal year's goals and were based on school and individual performance.
- Student achievement goals were based on AIMS test results. High school students' test scores improved.
- Most teachers participated in professional development activities, committees, teacher mentoring, after-school tutoring, and extracurricular activities.

##### Menu

- Monies were used primarily to increase eligible employee compensation.
- The District continued to use monies to pay an elementary school teacher to reduce class sizes.
- Monies were used for summer school dropout prevention activities. The District reports that most students attending passed on to the next grade level or earned additional credits.
- Monies were also used to pay for teacher liability insurance.