

# Canon Elementary School District

Yavapai County

Efficiency peer groups 11 and T-11, Achievement peer group 20

Legislative district(s): 1

District size, location:

Very small, Rural

Students attending:

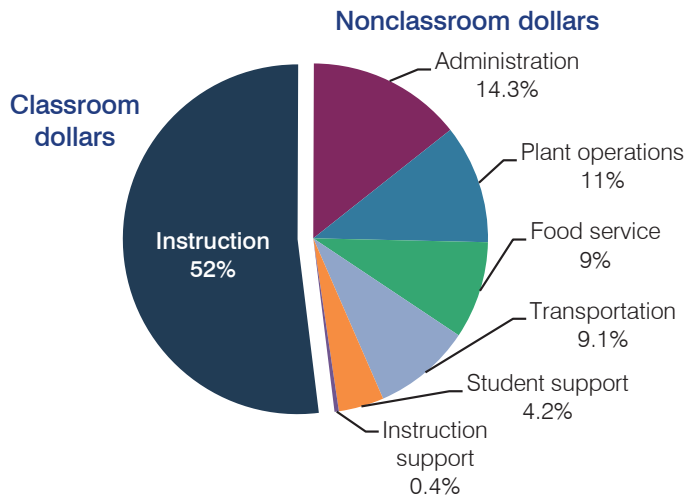
143

Number of schools:

1

## OPERATIONAL EFFICIENCY

### Spending by operational area



### 5-year spending trend

Total spending per pupil increased by 14 percent. Spending in the classroom varied year to year, increasing overall from 47.4 to 52 percent. Spending on nonclassroom areas also varied year to year, as is common for very small districts. Overall, spending on administration decreased substantially and spending on transportation and student support increased substantially.

### Cost measures relative to peer averages

Operational area	Measure	District	Peer average	State average
Administration	Cost per pupil	\$1,543	\$2,572	\$746
	Students per administrator	30	30	67
Plant operations	Cost per square foot	\$4.45	\$6.59	\$6.03
	Square footage per student	267	343	153
Food service	Cost per meal equivalent	\$4.36	\$4.93	\$2.58
Transportation	Cost per mile	\$1.94	\$1.64	\$3.55
	Cost per rider	\$1,294	\$1,184	\$1,015

### Per pupil spending by operational area

	District		Peer average	State average	National average
	2012	2013	2013	2013	2011
<b>Total</b>	<b>\$11,438</b>	<b>\$10,830</b>	<b>\$15,203</b>	<b>\$7,496</b>	<b>\$10,658</b>
<b>Classroom dollars</b>	<b>5,383</b>	<b>5,634</b>	<b>7,647</b>	<b>4,031</b>	<b>6,520</b>
<b>Nonclassroom dollars:</b>	<b>6,055</b>	<b>5,196</b>	<b>7,556</b>	<b>3,465</b>	<b>4,138</b>
Administration	2,409	1,543	2,572	746	1,138
Plant operations	1,368	1,189	2,148	924	1,015
Food service	1,063	976	851	396	412
Transportation	922	986	1,056	369	452
Student support	182	457	548	582	593
Instruction support	111	45	381	448	528

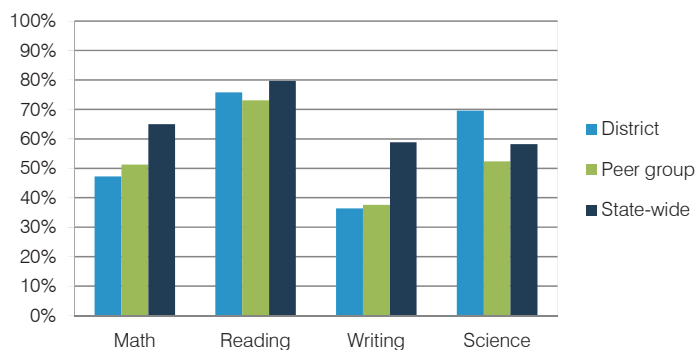
## STUDENT ACHIEVEMENT, TEACHER MEASURES, AND FINANCIAL ASSESSMENT

### ADE-reported district and school letter grades

District grade: **C**

Grade	Number of schools	Percentage of schools
A	0	0%
B	0	0%
C	1	100%
D	0	0%
F	0	0%
Not rated	0	0%

### Students who met state standards (AIMS)



### Student and teacher measures

Measure	District	Peer average	State average
Attendance rate	94%	94%	94%
Graduation rate (2012)	N/A	N/A	N/A
Poverty rate (2012)	37%	38%	25%
Students per teacher	17.9	15.1	18.3
Average teacher salary	\$60,607	\$44,190	\$45,264
Amount from Proposition 301	\$2,924	\$3,324	\$3,784
Average years of teacher experience	5.2	11.1	10.9
Percentage of teachers in first 3 years	47%	20%	19%

### Financial stress assessment

Overall financial stress level: **Moderate**

Measure: 2011 through 2013	Assessment
Number of students attending district	Large decrease
Spending exceeded operating/capital budgets	No overspending
Spending increase election results	No election held
Operating reserve percentage (max. 4%), trend	2.3%, Increasing
Years of capital reserve held	1 to 3 years
Current financial and internal control status	Noncompliant

