

Cañon Elementary School District

Yavapai County

Efficiency peer groups 11 and T-11, Achievement peer group 17

Legislative district(s): 1

District size, location:

Very small, Rural

Students attending:

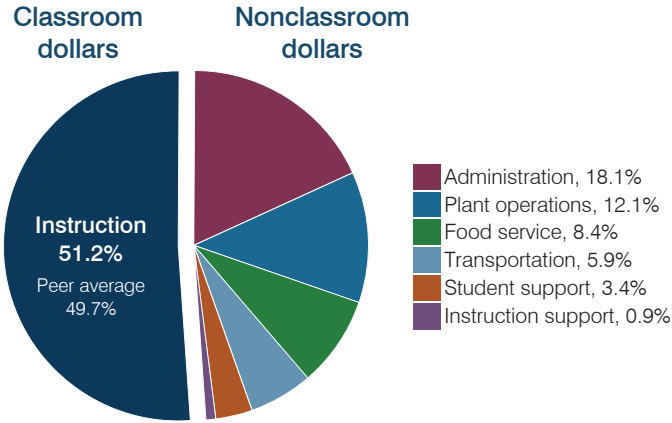
102

Number of schools:

1

OPERATIONAL EFFICIENCY

Spending by operational area



Efficiency measures relative to peer averages

Operational area	Measure	District	Peer average	State average
Administration	Cost per pupil	\$2,441	\$2,987	\$806
	Students per administrative position	26	30	67
Plant operations	Cost per square foot	\$4.39	\$7.21	\$6.10
	Square footage per student	373	364	154
Food service	Cost per meal	\$4.88	\$5.54	\$2.81
	Cost per mile	\$2.82	\$1.75	\$3.72
Transportation	Cost per rider	\$981	\$1,495	\$1,092

Per pupil spending

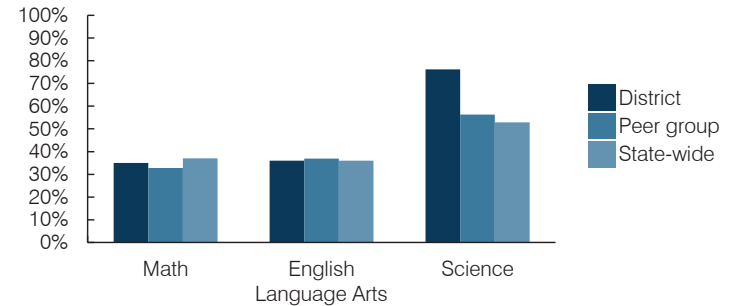
Spending by area	District		Peer average 2016	State average 2016
	2015	2016		
Instruction	\$ 7,232	\$ 6,928	\$ 8,342	\$ 4,145
Administration	2,197	2,441	2,987	806
Plant operations	2,210	1,639	2,523	939
Food service	1,074	1,136	918	415
Transportation	968	794	1,108	364
Student support	185	466	664	633
Instruction support	97	120	514	444
Total operational	\$ 13,963	\$ 13,524	\$ 17,056	\$ 7,746
Land and buildings	\$ 726	\$ 1,117	\$ 2,005	\$ 621
Equipment	1,915	390	819	400
Interest	0	0	31	216
Other	0	0	87	153
Total nonoperational	\$ 2,641	\$ 1,507	\$ 2,942	\$ 1,390
Total per pupil spending	\$ 16,604	\$ 15,031	\$ 19,998	\$ 9,136

STUDENT AND TEACHER MEASURES, FINANCIAL ASSESSMENT, AND REVENUES

Student and teacher measures

Measure	District	Peer average	State average
Attendance rate (2015)	95%	95%	94%
Graduation rate (2015)	N/A	N/A	N/A
Poverty rate (2015)	21%	19%	23%
Students per teacher	10.2	14.2	18.6
Average teacher salary	\$48,111	\$44,172	\$46,384
Amount from Proposition 301	\$3,863	\$4,469	\$5,315
Average years of teacher experience	15.3	12.6	11.0
Percentage of teachers in first 3 years	0%	14%	20%

Students who passed state assessments



Financial stress assessment

Overall financial stress level: **Moderate**

Measure: 2014 through 2016

Assessment

Change in number of district students	Small school adjustment
Spending exceeded operating/capital budgets	Capital only
Spending increase election results	No election held
Operating reserve percentage, Trend	5.0%, Increasing
Years of capital reserve held	1 to 3 years
Current financial and internal control status	Marginally compliant

Low	Moderate	High
-----	----------	------

Per pupil revenues

Revenues by source	District		Peer average 2016	State average 2016
	2015	2016		
Federal	\$ 2,576	\$ 2,825	\$ 3,667	\$ 1,301
State	7,045	5,360	6,156	3,780
Local	5,912	6,550	14,438	4,268
Total revenues per pupil	\$ 15,533	\$ 14,735	\$ 24,261	\$ 9,349

Select revenues from common sources

Equalization formula funding	\$ 9,933	\$ 7,040	\$ 9,047	\$ 5,471
Grants	3,305	3,851	4,768	1,182
Donations and tax credits	106	141	186	86

Select revenues from less common sources

	Number of peers receiving		
Desegregation	\$ 0	\$ 0	0 of 52
Small school adjustment	0	781	44 of 52
Federal impact aid	0	0	3 of 52
Voter-approved levy increases	0	0	7 of 52

Classroom dollar percentage

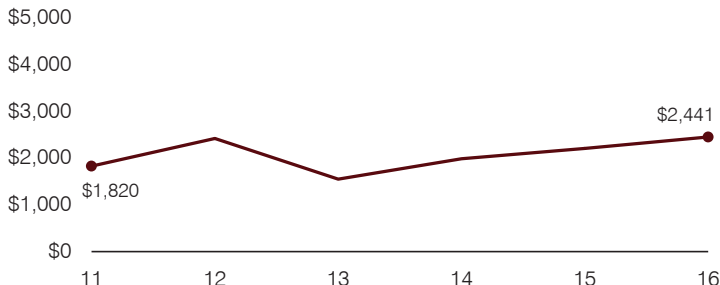
Year:	2001	2002	2003	2004	2005	2006	2007	2008	2009	2010	2011	2012	2013	2014	2015	2016
Percentage:	47.9	48.8	48.5	49.5	48.1	50.5	51.3	47.4	51.7	50.1	53.3	47.1	52.0	51.8	51.8	51.2

OPERATIONAL TRENDS
Fiscal years as indicated

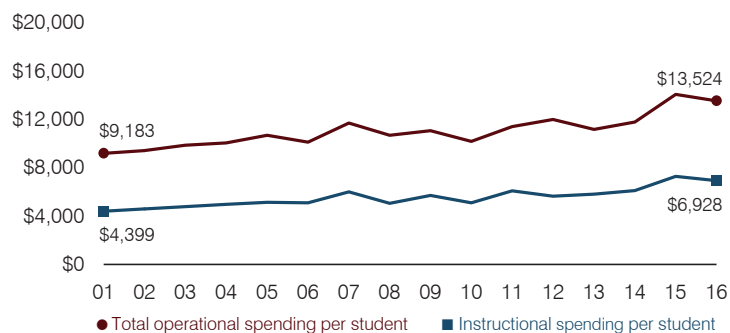
5-year spending trend (2011 through 2016)

Student enrollment decreased by 39 percent, which contributed to the 19 percent increase in total operational spending per pupil, adjusted for inflation. The percentage of dollars spent in the classroom varied year to year, decreasing overall from 53.3 to 51.2 percent. As a percentage of total operational spending, most nonclassroom areas also varied year to year, as is common for very small districts.

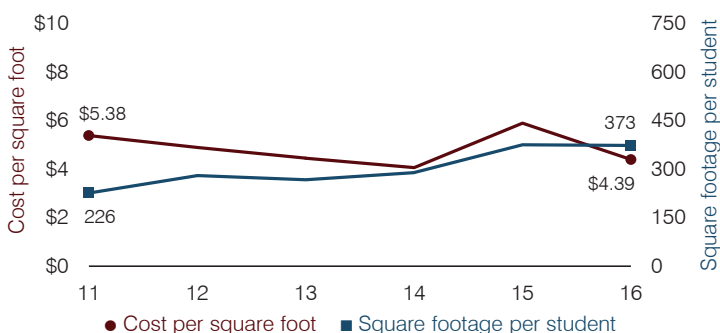
Administrative cost per pupil



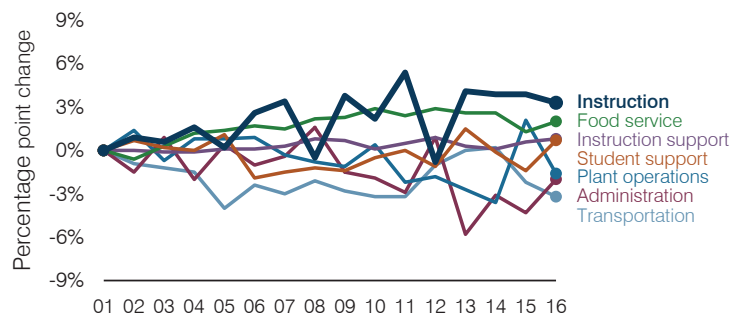
Total operational and instructional spending per pupil (inflation adjusted to 2016 dollars)



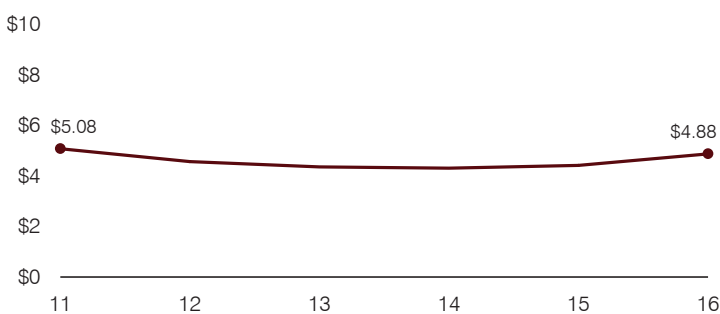
Plant cost per square foot and square footage per student



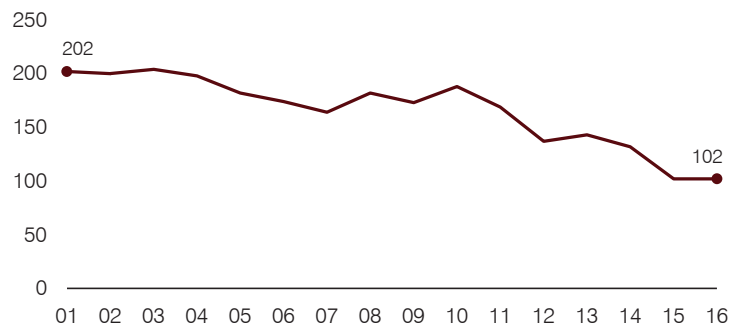
Changes in operational spending percentages



Food service cost per meal



Students attending



Transportation costs per mile and per rider

