

# Canon Elementary School District

Yavapai County  
Operational peer group: L  
Legislative districts: 4

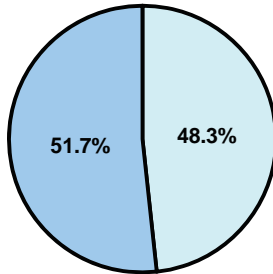
District size: Very Small  
Students attending: 173  
Number of schools: 1

## OPERATIONAL EFFICIENCY

### Average per-pupil spending

District  
State

Classroom  
\$5,146  
\$4,497



Nonclassroom  
\$4,815  
\$3,411

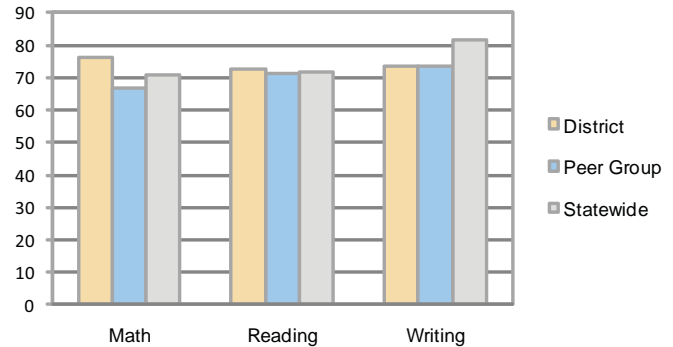
Total  
\$9,961  
\$7,908

### 5-year trend

Total spending per pupil increased by 27 percent. Spending in the classroom was very inconsistent year to year and increased overall from 49.5 to 51.7 percent. Spending on plant operations, transportation, and student support decreased, while spending in other nonclassroom areas remained fairly stable.

## STUDENT ACHIEVEMENT AND TEACHER INFORMATION

### Percentage of students meeting state standards (AIMS)



### Adequate Yearly Progress (AYP) toward federal goals

The District's fiscal year 2009 AYP for NCLB has not yet been determined.

### Student and teacher information

| Measure                              | District | Peer average | State average |
|--------------------------------------|----------|--------------|---------------|
| Attendance rate                      | 95%      | 94%          | 95%           |
| Graduation rate (2008)               | N/A      | 54%          | 75%           |
| Poverty rate                         | 23%      | 31%          | 19%           |
| Student/teacher ratio                | 14.5     | 10.8         | 17.1          |
| Average teacher salary               | \$40,219 | \$45,165     | \$45,209      |
| Average years' experience            | 6.1      | 12.7         | 8.3           |
| Percent of teachers in first 3 years | 42%      | 15%          | 16%           |

### District's cost measures relative to peer group

| Operational Area | Measure                    | District | Peer Average | State Average |
|------------------|----------------------------|----------|--------------|---------------|
| Administration   | Cost per pupil             | \$1,851  | \$2,656      | \$729         |
|                  | Students per administrator | 35       | 32           | 66            |
| Plant Operations | Cost per square foot       | \$5.70   | \$7.53       | \$6.40        |
|                  | Square footage per student | 220      | 318          | 144           |
| Food Service     | Cost per meal equivalent   | \$3.77   | \$5.10       | \$2.53        |
| Transportation   | Cost per mile              | \$1.18   | \$1.79       | \$3.36        |
|                  | Miles per rider            | 506      | 710          | 271           |

Very Low Low Comparable High Very High

### Per-pupil spending by function

|                              | District       |                | Peer            | State          | National       |
|------------------------------|----------------|----------------|-----------------|----------------|----------------|
|                              | 2008           | 2009           | 2009            | 2009           | 2007           |
| <b>Total</b>                 | <b>\$9,493</b> | <b>\$9,961</b> | <b>\$16,311</b> | <b>\$7,908</b> | <b>\$9,683</b> |
| <b>Classroom dollars</b>     | <b>\$4,496</b> | <b>\$5,146</b> | <b>\$8,757</b>  | <b>\$4,497</b> | <b>\$5,903</b> |
| <b>Nonclassroom dollars:</b> | <b>\$4,997</b> | <b>\$4,815</b> | <b>\$7,554</b>  | <b>\$3,411</b> | <b>\$3,780</b> |
| Administration               | 2,066          | 1,851          | 2,656           | 729            | 1,050          |
| Plant Operations             | 1,220          | 1,257          | 2,297           | 920            | 951            |
| Food Service                 | 813            | 869            | 859             | 382            | 369            |
| Transportation               | 667            | 628            | 930             | 343            | 406            |
| Student Support              | 143            | 130            | 474             | 594            | 512            |
| Instruction Support          | 88             | 80             | 338             | 431            | 470            |
| Other                        | 0              | 0              | 0               | 12             | 22             |

### Proposition 301

#### Teacher pay

On average, each teacher earned \$1,875 in additional salary.

### Performance pay plan goals and results

| Type of goal                     | Goal met? |
|----------------------------------|-----------|
| Student achievement              | ■         |
| Dropout/ graduation rates        |           |
| Student attendance               | ■         |
| Parent/student satisfaction      | ■         |
| Teacher attendance               |           |
| Teacher professional development | ■         |
| Teacher evaluations              |           |
| Tutoring                         |           |
| Other                            |           |

■ = yes, □ = no, and ▴ = partially