

Classroom Dollars and Proposition 301 Results

Canon Elementary School District

Yavapai County

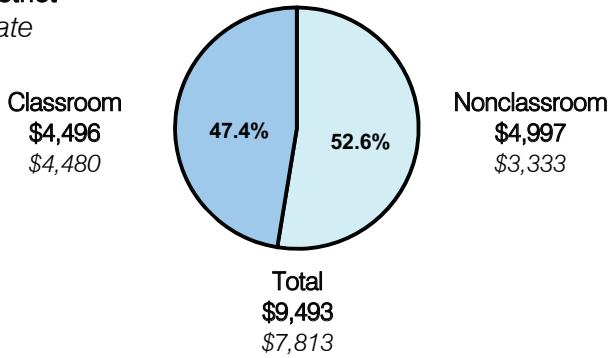
District size: Very Small
 Students attending: 182
 Number of schools: 1
 Number of certified teachers: 12

Classroom Dollars

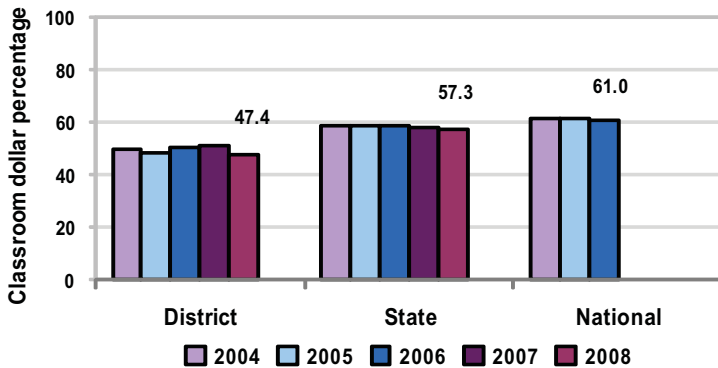
Fiscal year 2008 averages per pupil

District

State



5-year comparison



Expenditures by function

	District					State 2008	National 2006
	2004	2005	2006	2007	2008		
Classroom dollars	49.5	48.1	50.5	51.3	47.4	57.3	61.0
Nonclassroom dollars:							
Administration	18.1	20.5	19.1	19.7	21.7	9.2	10.8
Plant operations	14.5	14.5	14.6	13.4	12.9	11.3	9.9
Food service	7.6	7.8	8.1	7.9	8.6	4.8	3.8
Transportation	7.6	5.1	6.7	6.1	7.0	4.4	4.2
Student support	2.7	3.8	0.8	1.2	1.5	7.4	5.2
Instruction support		0.2	0.2	0.4	0.9	5.4	4.9
Other						0.2	0.2

Comparative Information

	District			State 2008
	2006	2007	2008	
Student/teacher ratio	15.1	14.3	15.2	17.3
Average teacher salary	\$36,017	\$39,770	\$34,757	\$44,967
Average years' experience	8.8	7.6	7.0	8.1

Classroom dollar ranking: 193 of 230 districts.

Proposition 301

District-reported 2008 results

Teacher pay

- On average, each teacher earned an additional \$4,100 in salary.

Performance

- The District accomplished most of its goals, which were similar to the prior fiscal year's goals and were based on school performance.
- At least 60 percent of students met or exceeded standards on standardized tests.
- Teachers aligned curriculum with state writing standards, received satisfactory performance evaluations, and participated in professional development activities, tutoring, and district functions.
- Student attendance was at least 94 percent.
- Parent and student satisfaction was assessed through end-of-the-year surveys.

Menu

- Monies continued to be used to pay for a physical education teacher to reduce class sizes to 1 grade per class and a kindergarten teacher to reduce class sizes from 30 students to 15.