

Classroom Dollars and Proposition 301 Results

Canon Elementary School District

Yavapai County

District size: Very Small
 Students attending: 164
 Number of schools: 1
 Number of certified teachers: 12

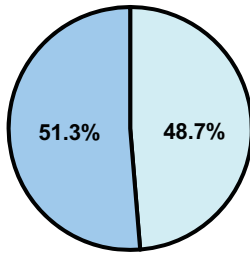
Classroom Dollars

Fiscal year 2007 averages per pupil

District

State

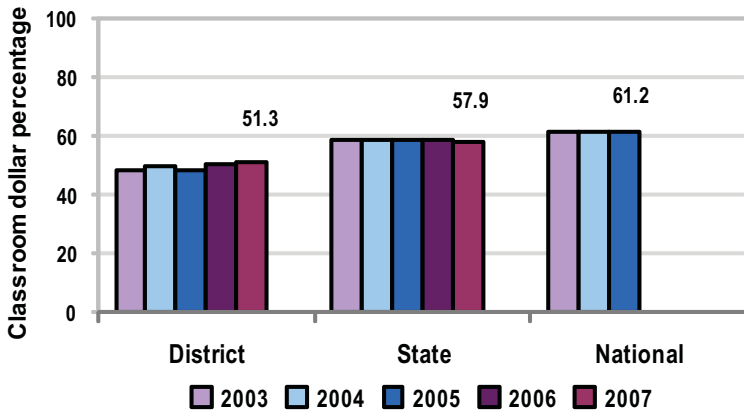
Classroom
\$5,139
\$4,277



Nonclassroom
\$4,877
\$3,105

Total
\$10,016
\$7,382

5-year comparison



Expenditures by function

	District					State 2007	National 2005
	2003	2004	2005	2006	2007		
Classroom dollars	48.5	49.5	48.1	50.5	51.3	57.9	61.2
Nonclassroom dollars:							
Administration	21.0	18.1	20.5	19.1	19.7	9.5	11.0
Plant operations	13.0	14.5	14.5	14.6	13.4	11.3	9.6
Food service	6.7	7.6	7.8	8.1	7.9	4.7	3.9
Transportation	7.9	7.6	5.1	6.7	6.1	4.3	4.1
Student support	2.9	2.7	3.8	0.8	1.2	7.3	5.2
Instruction support			0.2	0.2	0.4	4.8	4.8
Other						0.2	0.2

Comparative Information

	District			State 2007
	2005	2006	2007	
Student/teacher ratio	14.6	15.1	14.3	17.4
Average teacher salary	\$33,445	\$36,017	\$39,770	\$43,833
Average years' experience	9.1	8.8	7.6	8.1

Classroom dollar ranking: 166 of 229 districts.

Proposition 301

District-reported 2007 results

Teacher pay

- On average, each teacher earned an additional \$3,000 in salary.

Performance

- The District accomplished its goals, which were based on school performance.
- At least 60 percent of students met or exceeded standards on standardized tests.
- Teachers integrated technology into the curriculum, received satisfactory performance evaluations, and participated in professional development, tutoring, committee, or volunteer activities.
- Student attendance was at least 94 percent.
- Parent and student satisfaction was assessed through end-of-the-year surveys.
- Other goals were linked to curriculum development.

Menu

- Monies continued to be used to pay for a physical education teacher to reduce class sizes to 1 grade per class and a kindergarten teacher to reduce class sizes from 28 students to 14.