

Cartwright Elementary School District

Maricopa County
Peer groups: Efficiency Group 8, Achievement Group 15
Legislative district(s): 13

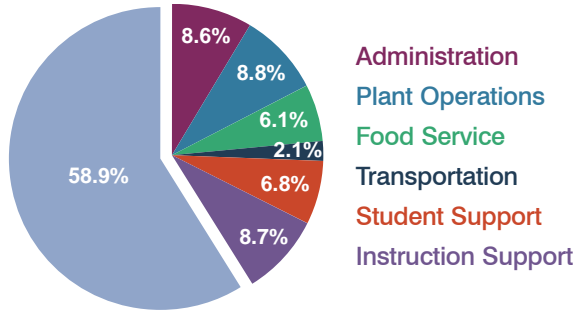
District size: Large
Students attending: 16,566
Number of schools: 20

OPERATIONAL EFFICIENCY

Spending by operational area

Classroom dollars

Nonclassroom dollars

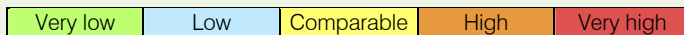


5-year trend

Total spending per pupil increased by 23 percent. Spending in the classroom remained fairly stable, but decreased significantly overall from 61.3 to 58.9 percent. Spending on instruction support increased, while spending on other nonclassroom areas remained stable.

District's cost measures relative to peer group

Operational Area	Measure	District	Peer Average	State Average
Administration	Cost per pupil	\$647	\$648	\$728
	Students per administrator	78	71	66
Plant Operations	Cost per square foot	\$5.33	\$6.32	\$6.10
	Square footage per student	123	130	152
Food Service	Cost per meal equivalent	\$2.36	\$2.29	\$2.45
Transportation	Cost per mile	\$4.83	\$4.66	\$3.39
	Miles per rider	134	180	283



Per-pupil spending by operational area

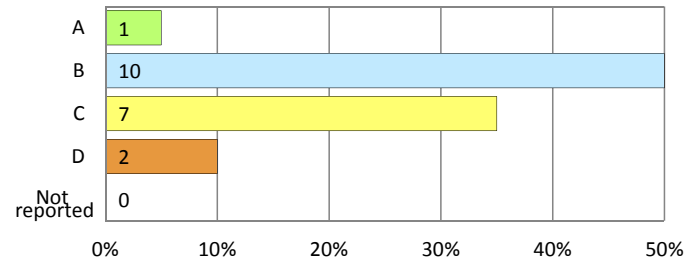
	District		Peer 2011	State 2011	National 2009
	2010	2011			
Total	\$7,499	\$7,519	\$7,201	\$7,485	\$10,591
Classroom dollars	\$4,496	\$4,431	\$4,033	\$4,098	\$6,456
Nonclassroom dollars:	\$3,003	\$3,088	\$3,168	\$3,387	\$4,135
Administration	603	647	648	728	1,147
Plant Operations	650	658	789	927	1,033
Food Service	455	460	467	375	404
Transportation	150	160	273	352	443
Student Support	513	512	498	571	573
Instruction Support	632	651	493	434	535

STUDENT ACHIEVEMENT AND TEACHER INFORMATION

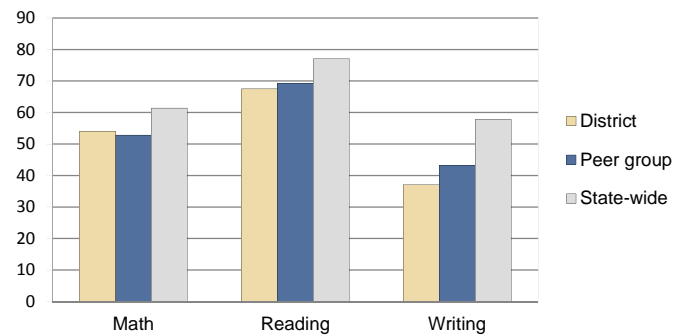
District and school letter grades

District grade: **B**

School grades (number and percentage):



Percentage of students meeting state standards (AIMS)



Student and teacher information

Measure	District	Peer Average	State Average
Attendance rate	95%	95%	95%
Graduation rate (2010)	N/A	N/A	N/A
Poverty rate (2010)	36%	31%	22%
Students per teacher	13.8	17.1	18.1
Average teacher salary	\$41,524	\$41,467	\$45,637
Average years of experience	9.1	9.6	10.9
Percent of teachers in first 3 years	18%	20%	16%

Proposition 301 pay, goals, and results

Average additional salary earned by teachers: \$4,547

Type of goal	Goal met?
Student achievement	▴
Dropout/graduation rates	-
Student attendance	■
Parent/student satisfaction	■
Teacher attendance	-
Teacher professional development	■
Teacher evaluations	-
Tutoring	-
Other	-

■ = yes, □ = no, ▴ = partially, and - = no goal set