

Cartwright Elementary School District

Maricopa County
Operational peer group: H
Legislative districts: 13

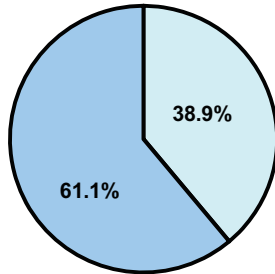
District size: Large
Students attending: 17,515
Number of schools: 22

OPERATIONAL EFFICIENCY

Average per-pupil spending

District
State

Classroom
\$4,959
\$4,497



Nonclassroom
\$3,158
\$3,411

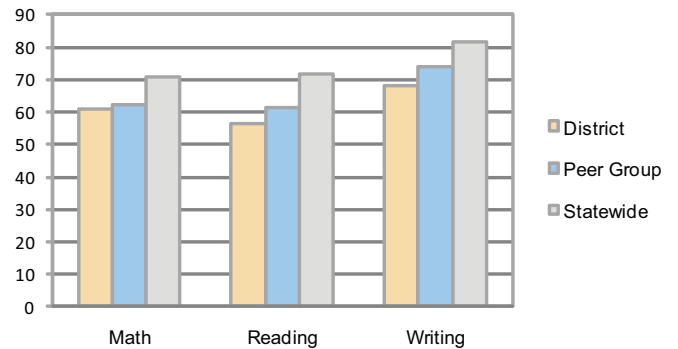
Total
\$8,117
\$7,908

5-year trend

Total spending per pupil increased by 41 percent. Spending in the classroom remained fairly stable and increased slightly overall from 60.7 to 61.1 percent. Spending on administration, plant operations, and student support decreased, while spending on instruction support increased significantly.

STUDENT ACHIEVEMENT AND TEACHER INFORMATION

Percentage of students meeting state standards (AIMS)



Adequate Yearly Progress (AYP) toward federal goals

13 schools met all applicable AYP objectives for NCLB. 9 schools did not because some students did not demonstrate sufficient academic progress.

Student and teacher information

Measure	District	Peer average	State average
Attendance rate	95%	95%	95%
Graduation rate (2008)	N/A	74%	75%
Poverty rate	23%	28%	19%
Student/teacher ratio	16.0	18.0	17.1
Average teacher salary	\$52,808	\$48,318	\$45,209
Average years' experience	6.9	8.9	8.3
Percent of teachers in first 3 years	47%	33%	16%

District's cost measures relative to peer group

Operational Area	Measure	District	Peer Average	State Average
Administration	Cost per pupil	\$638	\$705	\$729
	Students per administrator	66	67	66
Plant Operations	Cost per square foot	\$5.93	\$6.62	\$6.40
	Square footage per student	111	120	144
Food Service	Cost per meal equivalent	\$2.67	\$2.44	\$2.53
Transportation	Cost per mile	\$4.95	\$4.77	\$3.36
	Miles per rider	95	197	271

Very Low Low Comparable High Very High

Proposition 301

Teacher pay

On average, each teacher earned an additional \$4,904 in salary, and each librarian earned an additional \$3,500.

Performance pay plan goals and results

Type of goal	Goal met?
Student achievement	▲
Dropout/ graduation rates	■
Student attendance	■
Parent/student satisfaction	■
Teacher attendance	■
Teacher professional development	▲
Teacher evaluations	■
Tutoring	■
Other	■

■ = yes, □ = no, and ▲ = partially

Per-pupil spending by function

	District		Peer	State	National
	2008	2009	2009	2009	2007
Total	\$7,527	\$8,117	\$7,808	\$7,908	\$9,683
Classroom dollars	\$4,638	\$4,959	\$4,486	\$4,497	\$5,903
Nonclassroom dollars:	\$2,889	\$3,158	\$3,322	\$3,411	\$3,780
Administration	580	638	705	729	1,050
Plant Operations	605	656	786	920	951
Food Service	463	503	494	382	369
Transportation	126	141	272	343	406
Student Support	490	538	536	594	512
Instruction Support	625	682	529	431	470
Other	0	0	0	12	22