

Classroom Dollars and Proposition 301 Results

Cartwright Elementary School District

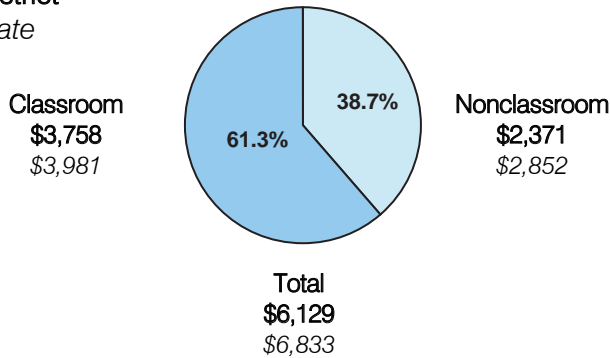
Maricopa County

District size: Very Large
 Students attending: 20,229
 Number of schools: 22
 Number of certified teachers: 1,042

Classroom Dollars

Fiscal year 2006 averages per pupil

District
 State

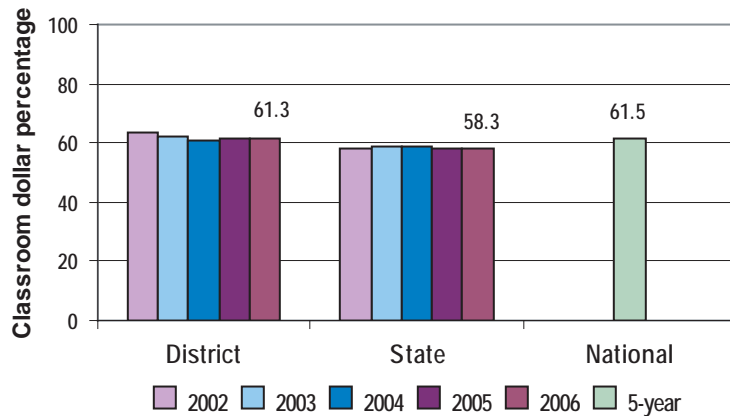


Comparative Information

	District			State
	2004	2005	2006	2006
Student/teacher ratio	19.4	18.9	19.4	17.7
Average teacher salary	\$49,550	\$54,835	\$49,723	\$42,967
Average years' experience	7.4	7.2	6.1	8.3

Classroom dollar ranking: 28 of 229 districts.

5-year comparison



Expenditures by function

	Percentage					State 2006	National 5-year
	2002	2003	2004	2005	2006		
Classroom dollars	63.3	62.0	60.7	61.6	61.3	58.3	61.5
Nonclassroom dollars:							
Administration	9.0	8.9	8.8	8.3	8.0	9.4	11.0
Plant operations	8.8	8.7	8.8	8.7	8.4	11.2	9.6
Food service	6.1	6.2	6.1	6.1	6.1	4.7	3.9
Transportation	1.5	1.6	1.6	1.5	1.5	4.2	4.0
Student support	5.9	6.4	7.7	7.4	7.0	7.2	5.1
Instruction support	5.4	6.2	6.3	6.4	7.7	4.8	4.7
Other						0.2	0.2

Proposition 301

District-reported 2006 results

Teacher pay

- On average, each teacher and librarian earned an additional \$5,270 in salary.

Performance

- The District accomplished some of its goals, which were measured based on fiscal year 2005 school performance.
- 4 student achievement goals were linked to students' standardized test scores.
- Each school had to achieve at least a 95 percent attendance rate each day during AIMS testing.

Menu

- Monies were used primarily to increase eligible employee compensation.
- Approximately 3,500 students were provided AIMS intervention activities focused on improving reading and math skills.
- Approximately 2,100 8th-grade students received additional tutoring to prepare them for high school placement testing.
- Teachers attended professional development programs focused on improving students' math and reading skills.