

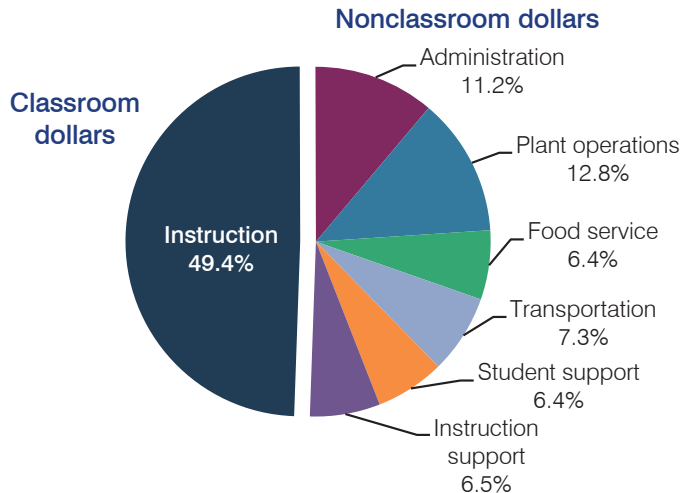
# Casa Grande Elementary School District

Pinal County  
 Efficiency peer groups 8 and T-4, Achievement peer group 13  
 Legislative district(s): 8 and 11

District size, location: Medium-Large, City  
 Students attending: 6,891  
 Number of schools: 12

## OPERATIONAL EFFICIENCY

### Spending by operational area



### 5-year spending trend

Total spending per pupil decreased by 5 percent. Spending in the classroom decreased overall from 52.8 to 49.4 percent. Overall, spending on administration and plant operations increased, while spending on most other nonclassroom areas remained fairly stable.

### Cost measures relative to peer averages

Operational area	Measure	District	Peer average	State average
Administration	Cost per pupil	\$785	\$791	\$746
	Students per administrator	69	69	67
Plant operations	Cost per square foot	\$6.90	\$6.28	\$6.03
	Square footage per student	130	138	153
Food service	Cost per meal equivalent	\$2.92	\$2.54	\$2.58
Transportation	Cost per mile	\$3.35	\$3.41	\$3.55
	Cost per rider	\$1,013	\$1,047	\$1,015

Very low Low Comparable High Very high

### Per pupil spending by operational area

	District		Peer average	State average	National average
	2012	2013	2013	2013	2011
<b>Total</b>	<b>\$6,880</b>	<b>\$6,987</b>	<b>\$7,193</b>	<b>\$7,496</b>	<b>\$10,658</b>
<b>Classroom dollars</b>	<b>3,427</b>	<b>3,449</b>	<b>3,672</b>	<b>4,031</b>	<b>6,520</b>
<b>Nonclassroom dollars:</b>	<b>3,453</b>	<b>3,538</b>	<b>3,521</b>	<b>3,465</b>	<b>4,138</b>
Administration	740	785	791	746	1,138
Plant operations	821	897	842	924	1,015
Food service	415	445	541	396	412
Transportation	496	513	273	369	452
Student support	467	444	541	582	593
Instruction support	514	454	533	448	528

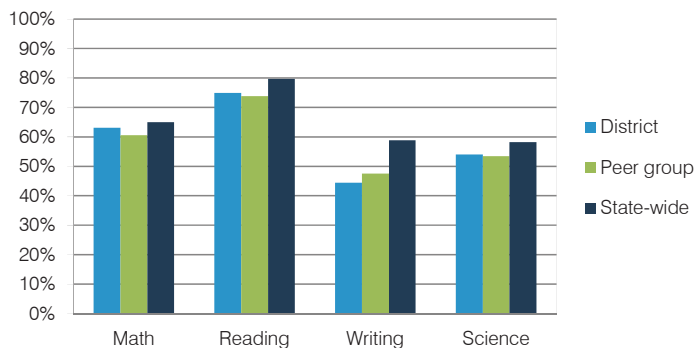
## STUDENT ACHIEVEMENT, TEACHER MEASURES, AND FINANCIAL ASSESSMENT

### ADE-reported district and school letter grades

District grade: **B**

Grade	Number of schools	Percentage of schools
A	1	8%
B	8	67%
C	3	25%
D	0	0%
F	0	0%
Not rated	0	0%

### Students who met state standards (AIMS)



### Student and teacher measures

Measure	District	Peer average	State average
Attendance rate	94%	95%	94%
Graduation rate (2012)	N/A	N/A	N/A
Poverty rate (2012)	26%	25%	25%
Students per teacher	18.6	19.1	18.3
Average teacher salary	\$41,667	\$40,312	\$45,264
Amount from Proposition 301	\$4,163	\$3,530	\$3,784
Average years of teacher experience	8.7	7.4	10.9
Percentage of teachers in first 3 years	26%	31%	19%

### Financial stress assessment

Overall financial stress level: **Low**

Measure: 2011 through 2013	Assessment
Number of students attending district	Steady
Spending exceeded operating/capital budgets	No overspending
Spending increase election results	Mixed election results
Operating reserve percentage (max. 4%), trend	3.8%, Steady
Years of capital reserve held	Less than 1 year
Current financial and internal control status	Compliant

