

Casa Grande Elementary School District

Pinal County

Efficiency peer groups 8 and T-4, Achievement peer group 13

Legislative district(s): 8 and 11

District size, location:

Medium-large, Suburb

Students attending:

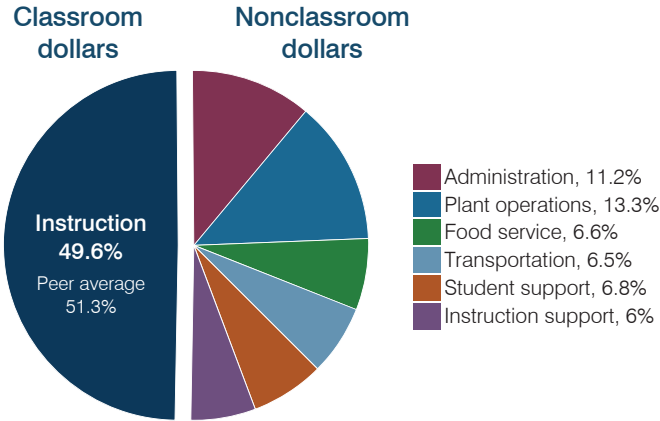
6,548

Number of schools:

12

OPERATIONAL EFFICIENCY

Spending by operational area



Efficiency measures relative to peer averages

Operational area	Measure	District	Peer average	State average
Administration	Cost per pupil	\$851	\$943	\$806
	Students per administrative position	71	71	67
Plant operations	Cost per square foot	\$7.35	\$6.27	\$6.10
	Square footage per student	137	141	154
Food service	Cost per meal	\$2.75	\$2.60	\$2.81
Transportation	Cost per mile	\$3.68	\$3.58	\$3.72
	Cost per rider	\$1,105	\$1,168	\$1,092

Per pupil spending

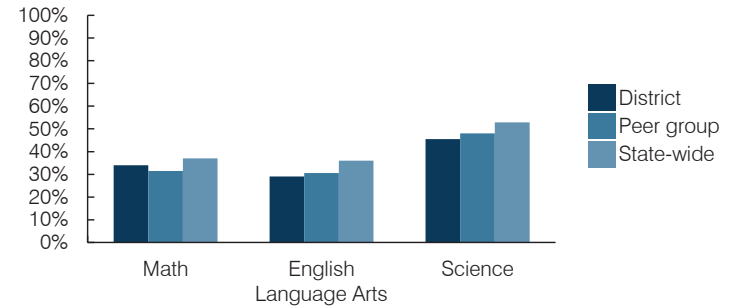
Spending by area	District		Peer average 2016	State average 2016
	2015	2016		
Instruction	\$ 3,719	\$ 3,755	\$ 3,896	\$ 4,145
Administration	841	851	943	806
Plant operations	978	1,006	866	939
Food service	489	503	598	415
Transportation	494	492	301	364
Student support	467	518	562	633
Instruction support	436	451	495	444
Total operational	\$ 7,424	\$ 7,576	\$ 7,661	\$ 7,746
Land and buildings	\$ 109	\$ 45	\$ 1,802	\$ 621
Equipment	187	178	577	400
Interest	54	44	250	216
Other	64	61	155	153
Total nonoperational	\$ 414	\$ 328	\$ 2,784	\$ 1,390
Total per pupil spending	\$ 7,838	\$ 7,904	\$ 10,445	\$ 9,136

STUDENT AND TEACHER MEASURES, FINANCIAL ASSESSMENT, AND REVENUES

Student and teacher measures

Measure	District	Peer average	State average
Attendance rate (2015)	94%	94%	94%
Graduation rate (2015)	N/A	N/A	N/A
Poverty rate (2015)	23%	26%	23%
Students per teacher	19.5	19.0	18.6
Average teacher salary	\$44,040	\$40,596	\$46,384
Amount from Proposition 301	\$7,716	\$4,805	\$5,315
Average years of teacher experience	10.4	7.6	11.0
Percentage of teachers in first 3 years	23%	39%	20%

Students who passed state assessments



Financial stress assessment

Overall financial stress level: **Low**

Measure: 2014 through 2016

Measure	Assessment
Change in number of district students	Steady
Spending exceeded operating/capital budgets	No overspending
Spending increase election results	Voter-approved
Operating reserve percentage, Trend	4.7%, Increasing
Years of capital reserve held	1 to 3 years
Current financial and internal control status	Compliant

Low Moderate High

Per pupil revenues

Revenues by source	District		Peer average 2016	State average 2016
	2015	2016		
Federal	\$ 1,256	\$ 1,219	\$ 1,781	\$ 1,301
State	4,224	4,424	3,849	3,780
Local	2,657	2,580	4,470	4,268
Total revenues per pupil	\$ 8,137	\$ 8,223	\$ 10,100	\$ 9,349

Select revenues from common sources

Source	District 2015	District 2016	Peer average 2016	State average 2016
Equalization formula funding	\$ 5,215	\$ 5,389	\$ 5,085	\$ 5,471
Grants	1,284	1,255	1,865	1,182
Donations and tax credits	23	20	46	86

Select revenues from less common sources

Source	District 2015	District 2016	Number of peers receiving
Desegregation	\$ 0	\$ 0	4 of 19
Small school adjustment	0	0	0 of 19
Federal impact aid	0	0	0 of 19
Voter-approved levy increases	866	882	19 of 19

Casa Grande ESD—page 2

Classroom dollar percentage

Year:	2001	2002	2003	2004	2005	2006	2007	2008	2009	2010	2011	2012	2013	2014	2015	2016
Percentage:	56.9	56.8	56.4	56.0	54.5	55.2	54.0	52.8	54.4	52.4	51.8	49.8	49.4	49.1	50.1	49.6

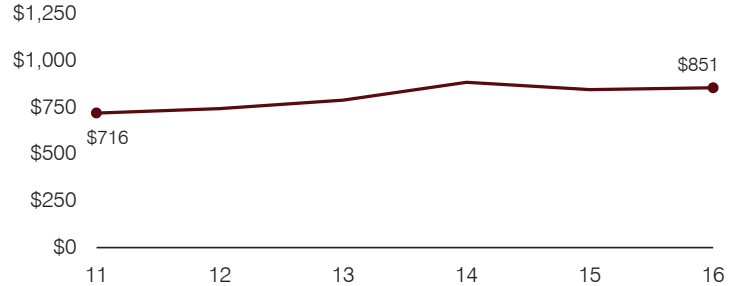
OPERATIONAL TRENDS

Fiscal years as indicated

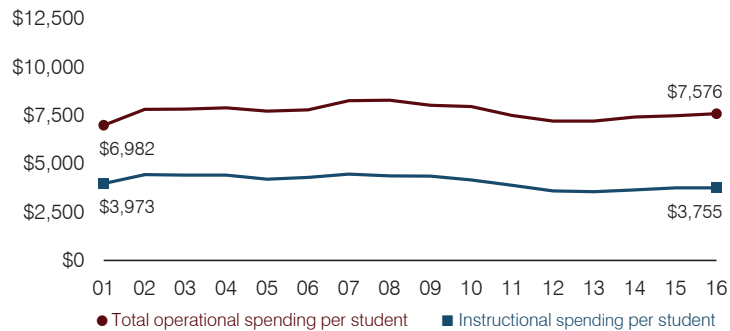
5-year spending trend (2011 through 2016)

Total operational spending per pupil, adjusted for inflation, increased by 1 percent. The percentage of dollars spent in the classroom decreased overall from 51.8 to 49.6 percent. Overall, as a percentage of total operational spending, plant operations and food service increased and administration increased slightly. Most other nonclassroom areas remained stable.

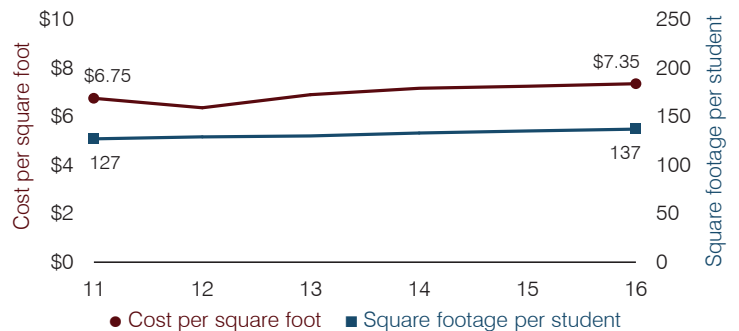
Administrative cost per pupil



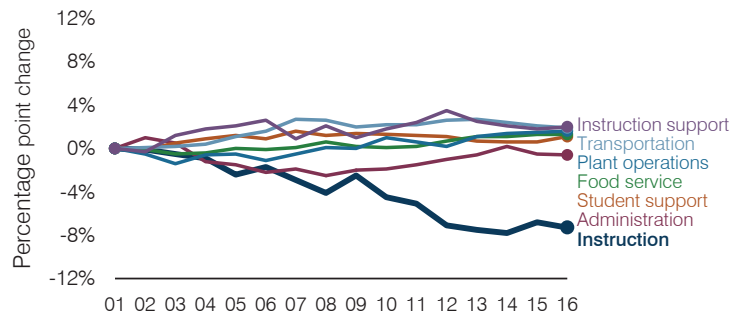
Total operational and instructional spending per pupil (inflation adjusted to 2016 dollars)



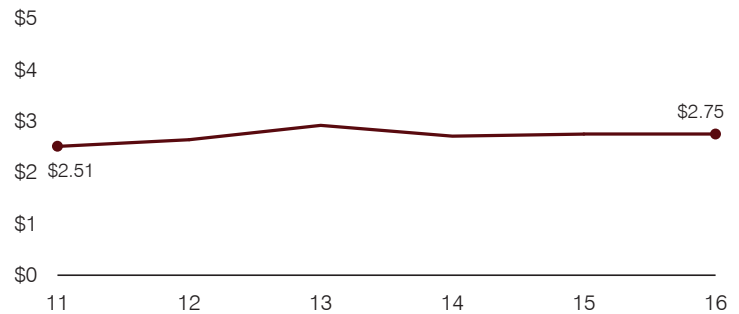
Plant cost per square foot and square footage per student



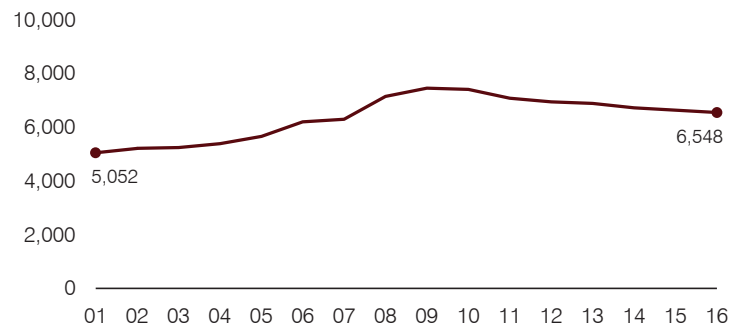
Changes in operational spending percentages



Food service cost per meal



Students attending



Transportation costs per mile and per rider

