

# Casa Grande Elementary School District

Pinal County  
Operational peer group: I  
Legislative districts: 23, 25

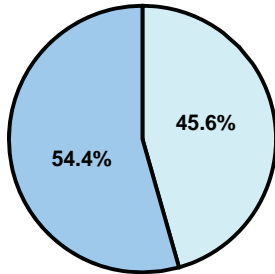
District size: Medium-Large  
Students attending: 7,459  
Number of schools: 12

## OPERATIONAL EFFICIENCY

### Average per-pupil spending

District  
State

**Classroom**  
\$3,927  
\$4,497



**Nonclassroom**  
\$3,297  
\$3,411

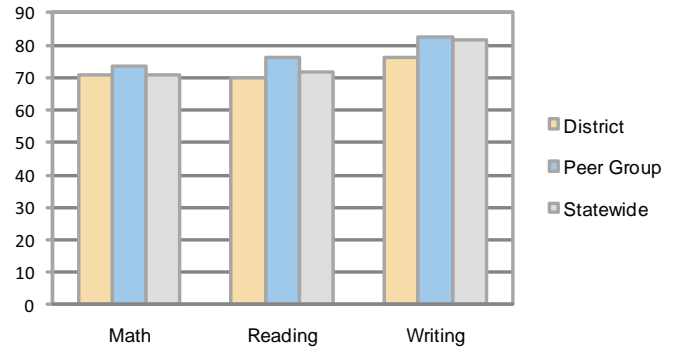
**Total**  
\$7,224  
\$7,908

### 5-year trend

Total spending per pupil increased by 17 percent. Spending in the classroom varied year to year and decreased overall from 56 to 54.4 percent. Spending on transportation increased and spending on administration decreased, while spending in other nonclassroom areas remained fairly stable.

## STUDENT ACHIEVEMENT AND TEACHER INFORMATION

### Percentage of students meeting state standards (AIMS)



### Adequate Yearly Progress (AYP) toward federal goals

12 schools met all applicable AYP objectives for NCLB.

### District's cost measures relative to peer group

Operational Area	Measure	District	Peer Average	State Average
Administration	Cost per pupil	\$705	\$840	\$729
	Students per administrator	75	69	66
Plant Operations	Cost per square foot	\$7.11	\$7.16	\$6.40
	Square footage per student	119	123	144
Food Service	Cost per meal equivalent	\$2.23	\$2.38	\$2.53
Transportation	Cost per mile	\$3.22	\$5.18	\$3.36
	Miles per rider	NR	132	271

Very Low   Low   Comparable   High   Very High

### Student and teacher information

Measure	District	Peer average	State average
Attendance rate	96%	95%	95%
Graduation rate (2008)	N/A	84%	75%
Poverty rate	16%	13%	19%
Student/teacher ratio	18.6	17.5	17.1
Average teacher salary	\$45,298	\$44,052	\$45,209
Average years' experience	7.8	8.4	8.3
Percent of teachers in first 3 years	34%	30%	16%

### Proposition 301

#### Teacher pay

On average, each teacher earned \$6,697 in additional salary, and each librarian, speech pathologist, counselor, and occupational therapist earned between \$4,199 and \$4,339.

#### Performance pay plan goals and results

Type of goal	Goal met?
Student achievement	
Dropout/ graduation rates	
Student attendance	
Parent/student satisfaction	
Teacher attendance	
Teacher professional development	
Teacher evaluations	▲
Tutoring	
Other	

■ = yes, □ = no, and ▲ = partially

### Per-pupil spending by function

	District		Peer	State	National
	2008	2009	2009	2009	2007
<b>Total</b>	<b>\$7,356</b>	<b>\$7,224</b>	<b>\$8,194</b>	<b>\$7,908</b>	<b>\$9,683</b>
<b>Classroom dollars</b>	<b>\$3,886</b>	<b>\$3,927</b>	<b>\$4,515</b>	<b>\$4,497</b>	<b>\$5,903</b>
<b>Nonclassroom dollars:</b>	<b>\$3,470</b>	<b>\$3,297</b>	<b>\$3,679</b>	<b>\$3,411</b>	<b>\$3,780</b>
Administration	661	705	840	729	1,050
Plant Operations	867	847	890	920	951
Food Service	431	396	525	382	369
Transportation	531	475	253	343	406
Student Support	505	516	626	594	512
Instruction Support	475	358	545	431	470
Other	0	0	0	12	22