

Casa Grande Union High School District

Pinal County
Operational peer group: C
Legislative districts: 23, 25

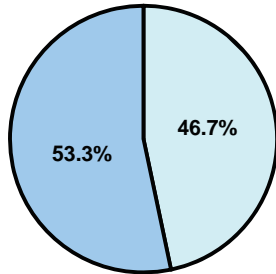
District size: Medium-Large
Students attending: 3,567
Number of schools: 3

OPERATIONAL EFFICIENCY

Average per-pupil spending

District
State

Classroom
\$4,272
\$4,497



Nonclassroom
\$3,736
\$3,411

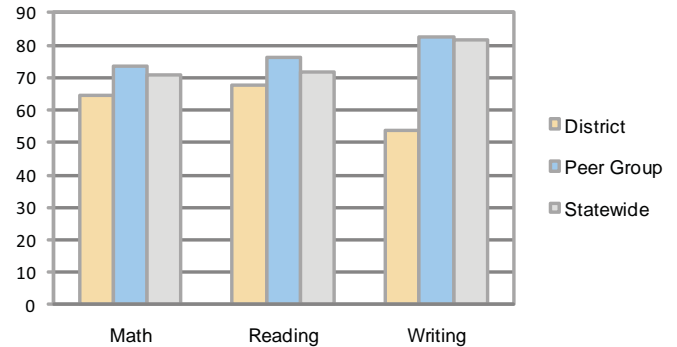
Total
\$8,008
\$7,908

5-year trend

Total spending per pupil increased by 10 percent. Spending in the classroom varied year to year and decreased overall from 55.1 to 53.3 percent. Spending on transportation increased significantly and spending on student support decreased significantly, while spending in other nonclassroom areas varied year to year.

STUDENT ACHIEVEMENT AND TEACHER INFORMATION

Percentage of students meeting state standards (AIMS)



Adequate Yearly Progress (AYP) toward federal goals

1 school met all applicable AYP objectives for NCLB. 1 did not because it failed to meet the percentage of students tested objective. 1 school did not have a sufficient attendance rate.

Student and teacher information

Measure	District	Peer average	State average
Attendance rate	95%	95%	95%
Graduation rate (2008)	75%	84%	75%
Poverty rate	19%	13%	19%
Student/teacher ratio	19.5	17.5	17.1
Average teacher salary	\$49,315	\$44,052	\$45,209
Average years' experience	10.1	8.4	8.3
Percent of teachers in first 3 years	9%	30%	16%

District's cost measures relative to peer group

Operational Area	Measure	District	Peer Average	State Average
Administration	Cost per pupil	\$765	\$733	\$729
	Students per administrator	61	63	66
Plant Operations	Cost per square foot	\$9.04	\$6.20	\$6.40
	Square footage per student	97	144	144
Food Service	Cost per meal equivalent	\$2.85	\$2.79	\$2.53
Transportation	Cost per mile	\$3.25	\$3.31	\$3.36
	Miles per rider	NR	230	271

Very Low Low Comparable High Very High

Per-pupil spending by function

	District		Peer	State	National
	2008	2009	2009	2009	2007
Total	\$7,955	\$8,008	\$7,484	\$7,908	\$9,683
Classroom dollars	\$4,198	\$4,272	\$4,298	\$4,497	\$5,903
Nonclassroom dollars:	\$3,757	\$3,736	\$3,186	\$3,411	\$3,780
Administration	879	765	733	729	1,050
Plant Operations	960	873	869	920	951
Food Service	319	393	332	382	369
Transportation	775	837	400	343	406
Student Support	626	723	543	594	512
Instruction Support	156	114	295	431	470
Other	42	31	14	12	22

Proposition 301

Teacher pay

On average, each teacher earned \$8,330 in additional salary, and each librarian and counselor earned an additional \$8,502.

Performance pay plan goals and results

Type of goal	Goal met?
Student achievement	■
Dropout/ graduation rates	
Student attendance	
Parent/student satisfaction	
Teacher attendance	
Teacher professional development	
Teacher evaluations	■
Tutoring	
Other	

■ = yes, □ = no, and ▤ = partially