

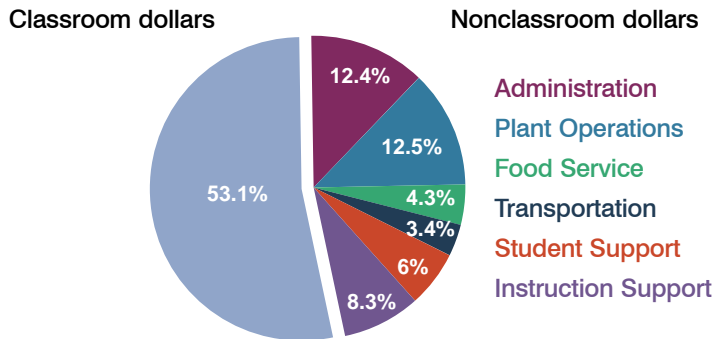
Catalina Foothills Unified School District

Pima County
Peer groups: Efficiency Group 3, Achievement Group 1
Legislative district(s): 26 and 30

District size: Medium-Large
Students attending: 4,779
Number of schools: 7

OPERATIONAL EFFICIENCY

Spending by operational area



5-year trend

Total spending per pupil decreased by 1 percent. Spending in the classroom decreased significantly overall from 58.1 percent. Spending on instruction support increased significantly, while spending on other areas varied year to year.

District's cost measures relative to peer group

Operational Area	Measure	District	Peer Average	State Average
Administration	Cost per pupil	\$832	\$745	\$728
	Students per administrator	64	68	66
Plant Operations	Cost per square foot	\$5.00	\$5.71	\$6.10
	Square footage per student	168	163	152
Food Service	Cost per meal equivalent	\$2.93	\$2.76	\$2.45
Transportation	Cost per mile	\$3.07	\$3.17	\$3.39
	Miles per rider	248	270	283

Very low Low Comparable High Very high

Per-pupil spending by operational area

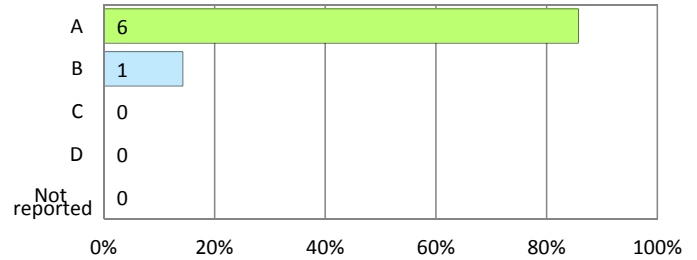
	District		Peer 2011	State 2011	National 2009
	2010	2011			
Total	\$6,786	\$6,698	\$7,065	\$7,485	\$10,591
Classroom dollars	\$3,685	\$3,558	\$3,826	\$4,098	\$6,456
Nonclassroom dollars:	\$3,101	\$3,140	\$3,239	\$3,387	\$4,135
Administration	812	832	745	728	1,147
Plant Operations	767	839	917	927	1,033
Food Service	274	284	329	375	404
Transportation	223	226	423	352	443
Student Support	444	402	519	571	573
Instruction Support	581	557	306	434	535

STUDENT ACHIEVEMENT AND TEACHER INFORMATION

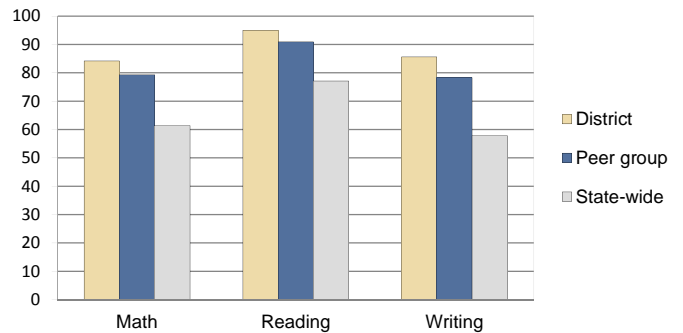
District and school letter grades

District grade: **A**

School grades (number and percentage):



Percentage of students meeting state standards (AIMS)



Student and teacher information

Measure	District	Peer Average	State Average
Attendance rate	96%	95%	95%
Graduation rate (2010)	95%	93%	78%
Poverty rate (2010)	6%	8%	22%
Students per teacher	18.4	18.4	18.1
Average teacher salary	\$42,563	\$41,257	\$45,637
Average years of experience	11.2	10.0	10.9
Percent of teachers in first 3 years	17%	15%	16%

Proposition 301 pay, goals, and results

Average additional salary earned by teachers: \$3,063

Type of goal	Goal met?
Student achievement	■
Dropout/graduation rates	-
Student attendance	-
Parent/student satisfaction	-
Teacher attendance	■
Teacher professional development	■
Teacher evaluations	■
Tutoring	-
Other	-

■ = yes, □ = no, ■ = partially, and - = no goal set