

Catalina Foothills Unified School District

Pinal County
Operational peer group: C
Legislative districts: 26, 30

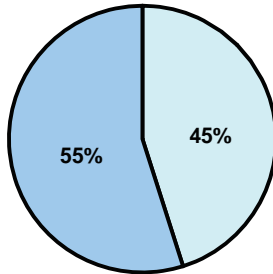
District size: Medium-Large
Students attending: 4,715
Number of schools: 7

OPERATIONAL EFFICIENCY

Average per-pupil spending

District
State

Classroom
\$4,125
\$4,497



Nonclassroom
\$3,381
\$3,411

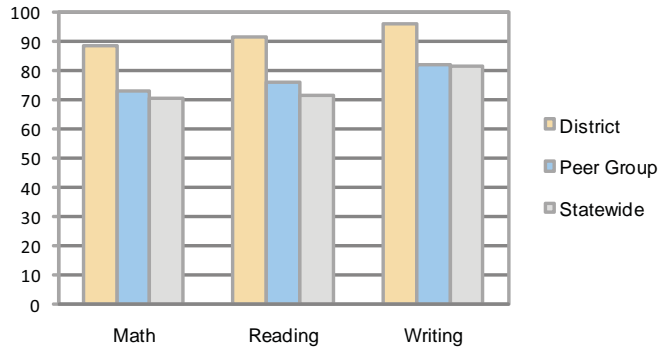
Total
\$7,506
\$7,908

5-year trend

Total spending per pupil increased by 22 percent. Spending in the classroom decreased significantly overall from 60.5 to 55 percent. Spending on instruction support increased significantly, while spending in other areas remained fairly stable.

STUDENT ACHIEVEMENT AND TEACHER INFORMATION

Percentage of students meeting state standards (AIMS)



Adequate Yearly Progress (AYP) toward federal goals

7 schools met all applicable AYP objectives for NCLB.

Student and teacher information

Measure	District	Peer average	State average
Attendance rate	96%	95%	95%
Graduation rate (2008)	94%	84%	75%
Poverty rate	5%	13%	19%
Student/teacher ratio	16.5	17.5	17.1
Average teacher salary	\$43,503	\$44,052	\$45,209
Average years' experience	10.5	8.4	8.3
Percent of teachers in first 3 years	20%	30%	16%

District's cost measures relative to peer group

Operational Area	Measure	District	Peer Average	State Average
Administration	Cost per pupil	\$849	\$733	\$729
	Students per administrator	63	63	66
Plant Operations	Cost per square foot	\$4.88	\$6.20	\$6.40
	Square footage per student	169	144	144
Food Service	Cost per meal equivalent	\$2.55	\$2.79	\$2.53
Transportation	Cost per mile	\$4.32	\$3.31	\$3.36
	Miles per rider	235	230	271

Very Low Low Comparable High Very High

Per-pupil spending by function

	District		Peer	State	National
	2008	2009	2009	2009	2007
Total	\$8,004	\$7,506	\$7,484	\$7,908	\$9,683
Classroom dollars	\$4,400	\$4,125	\$4,298	\$4,497	\$5,903
Nonclassroom dollars:	\$3,604	\$3,381	\$3,186	\$3,411	\$3,780
Administration	912	849	733	729	1,050
Plant Operations	891	827	869	920	951
Food Service	284	271	332	382	369
Transportation	239	331	400	343	406
Student Support	622	461	543	594	512
Instruction Support	656	642	295	431	470
Other	0	0	14	12	22

Proposition 301

Teacher pay

On average, each teacher earned \$5,191 in additional salary, and each librarian, speech pathologist, counselor, and reading or gifted specialist earned between \$1,217 and \$5,217.

Performance pay plan goals and results

Type of goal	Goal met?
Student achievement	■
Dropout/ graduation rates	■
Student attendance	■
Parent/student satisfaction	■
Teacher attendance	▲
Teacher professional development	■
Teacher evaluations	■
Tutoring	■
Other	■

■ = yes, □ = no, and ▲ = partially