

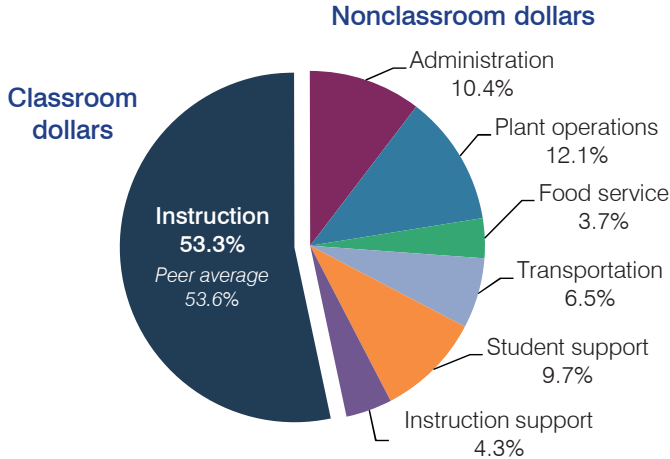
Cave Creek Unified School District

Maricopa County
 Efficiency peer groups 3 and T-4, Achievement peer group 1
 Legislative district(s): 1, 15, and 23

District size, location: Medium-large, City
 Students attending: 5,234
 Number of schools: 7

OPERATIONAL EFFICIENCY

Spending by operational area



Efficiency measures relative to peer averages

Operational area	Measure	District	Peer average	State average
Administration	Cost per pupil	\$755	\$780	\$780
	Students per administrative position	62	68	67
Plant operations	Cost per square foot	\$5.40	\$5.87	\$6.09
	Square footage per student	162	160	153
Food service	Cost per meal equivalent	\$2.74	\$2.92	\$2.79
Transportation	Cost per mile	\$3.24	\$3.61	\$3.66
	Cost per rider	\$849	\$1,124	\$1,071

Very low Low Comparable High Very high

Per pupil spending

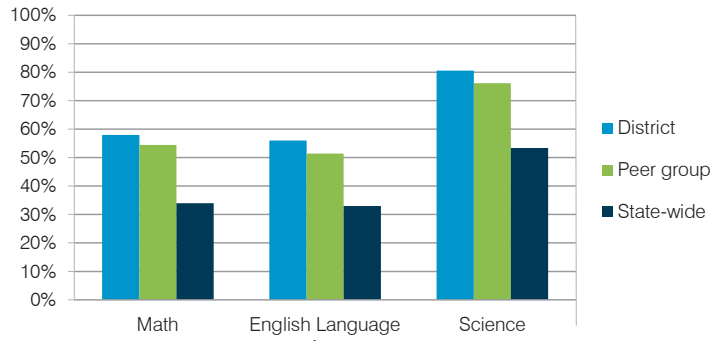
Spending by area	District		Peer average	State average
	2014	2015	2015	2015
Instruction	\$ 3,836	\$ 3,859	\$ 3,812	\$ 4,105
Administration	710	755	780	780
Plant operations	946	874	928	930
Food service	246	266	322	417
Transportation	480	468	412	371
Student support	728	705	553	613
Instruction support	297	310	304	442
Total operational	\$ 7,243	\$ 7,237	\$ 7,111	\$ 7,658
Land and buildings	\$ 431	\$ 1,261	\$ 676	\$ 641
Equipment	266	484	499	383
Interest	190	225	225	225
Other	366	421	145	150
Total nonoperational	\$ 1,253	\$ 2,391	\$ 1,545	\$ 1,399
Total per pupil spending	\$ 8,496	\$ 9,628	\$ 8,656	\$ 9,057

STUDENT AND TEACHER MEASURES, FINANCIAL ASSESSMENT, AND REVENUE

Student and teacher measures

Measure	District	Peer average	State average
Attendance rate	95%	95%	94%
Graduation rate (2014)	93%	91%	76%
Poverty rate (2014)	7%	8%	23%
Students per teacher	20.0	17.8	18.6
Average teacher salary	\$44,563	\$41,684	\$46,008
Average years of teacher experience	14.1	11.5	11.0
Percentage of teachers in first 3 years	14%	16%	20%

Students who met state standards



Financial stress assessment

Overall financial stress level: **Low**

Measure: 2013 through 2015	Assessment
Change in number of district students	Steady
Spending exceeded operating/capital budgets	No overspending
Spending increase election results	Mixed election results
Operating reserve percentage (max. 4%), trend	3.9%, Steady
Years of capital reserve held	1 to 3 years
Current financial and internal control status	Compliant

Low Moderate High

Per pupil revenues

Revenues by source	District		Peer average	State average
	2014	2015	2015	2015
Federal	\$ 380	\$ 420	\$ 771	\$ 1,299
State	1,826	1,846	2,873	3,517
Local	6,743	6,367	4,889	4,248
Total revenues per pupil	\$ 8,949	\$ 8,633	\$ 8,533	\$ 9,064
Select revenues from common sources				
Equalization formula funding	\$ 6,303	\$ 6,046	\$ 5,412	\$ 5,303
Grants	382	431	798	1,167
Donations and tax credits	177	211	127	78
Select revenues from less common sources				
Desegregation	\$ 0	\$ 0	1 of 15	
Small school adjustment	0	0	0 of 15	
Federal impact aid	0	0	3 of 15	
Voter-approved levy increases	524	353	14 of 15	

Cave Creek USD—page 2

Classroom dollar percentage

Year:	2001	2002	2003	2004	2005	2006	2007	2008	2009	2010	2011	2012	2013	2014	2015
Percentage:	54.8	56.0	58.3	57.2	59.7	59.6	55.5	56.7	55.6	54.4	54.9	53.2	53.9	53.0	53.3

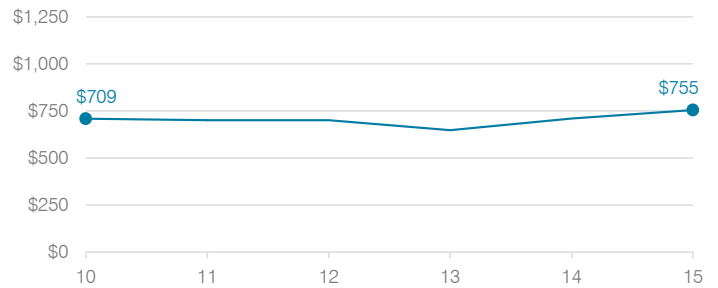
OPERATIONAL TRENDS

Fiscal years as indicated

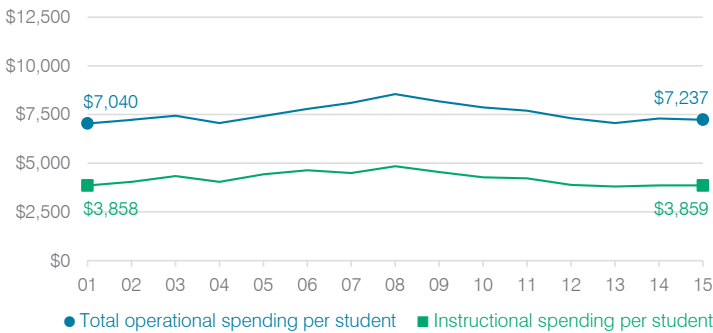
5-year spending trend (2010 through 2015)

Total operational spending per pupil, adjusted for inflation, decreased by 8 percent. The percentage of dollars spent in the classroom decreased overall from 54.4 to 53.3 percent. As a percentage of total operational spending, instruction support increased, while administration increased slightly and plant operations decreased. Other nonclassroom areas remained fairly stable.

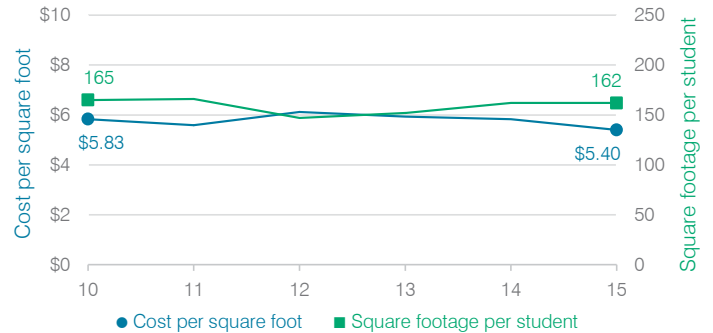
Administrative cost per student



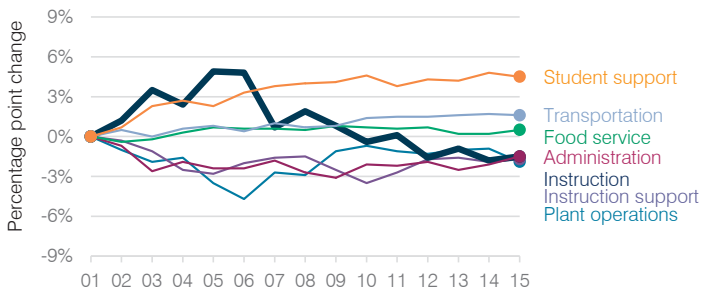
Total operational and instructional spending per student (inflation adjusted to 2015 dollars)



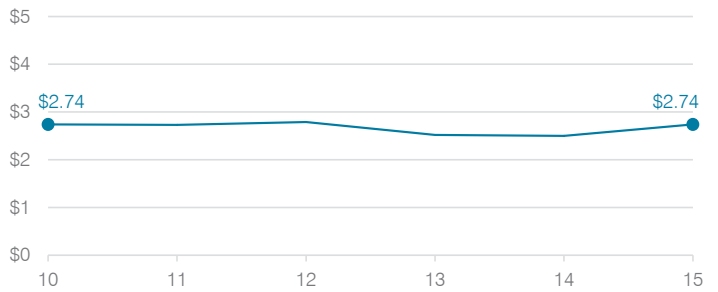
Plant cost per square foot and square footage per student



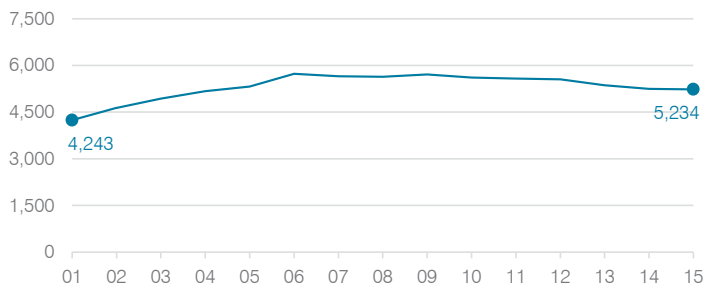
Changes in operational spending percentages



Food service cost per meal



Students attending



Transportation costs per mile and per rider

