

# Cedar Unified School District

Navajo County  
Operational peer group: F  
Legislative districts: 2

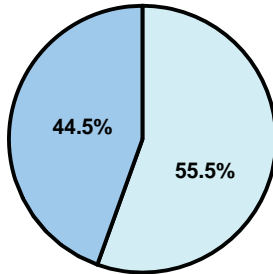
District size: Small  
Students attending: 316  
Number of schools: 2

## OPERATIONAL EFFICIENCY

### Average per-pupil spending

District  
State

Classroom  
**\$8,760**  
\$4,497



Nonclassroom  
**\$10,938**  
\$3,411

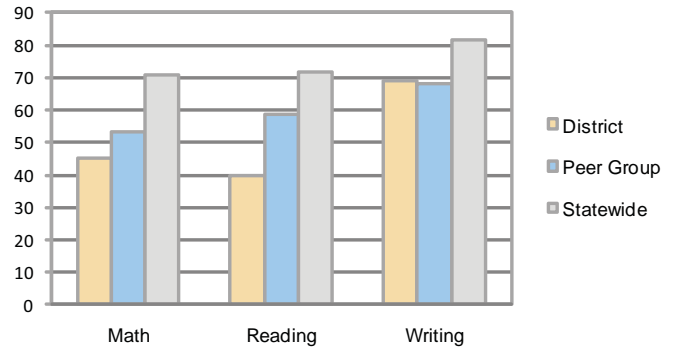
Total  
**\$19,698**  
\$7,908

### 5-year trend

Total spending per pupil increased by 38 percent. Spending in the classroom varied year to year and increased significantly overall from 41.6 to 44.5 percent. Spending on transportation and student support decreased, while spending in other nonclassroom areas varied year to year.

## STUDENT ACHIEVEMENT AND TEACHER INFORMATION

### Percentage of students meeting state standards (AIMS)



### Adequate Yearly Progress (AYP) toward federal goals

2 schools did not meet all applicable AYP objectives for NCLB because some students did not demonstrate sufficient academic progress.

### Student and teacher information

Measure	District	Peer average	State average
Attendance rate	92%	94%	95%
Graduation rate (2008)	30%	73%	75%
Poverty rate	37%	30%	19%
Student/teacher ratio	8.8	14.2	17.1
Average teacher salary	\$37,136	\$41,521	\$45,209
Average years' experience	11.7	10.8	8.3
Percent of teachers in first 3 years	30%	23%	16%

### District's cost measures relative to peer group

Operational Area	Measure	District	Peer Average	State Average
Administration	Cost per pupil	\$2,614	\$1,524	\$729
	Students per administrator	21	42	66
Plant Operations	Cost per square foot	\$6.63	\$5.78	\$6.40
	Square footage per student	493	284	144
Food Service	Cost per meal equivalent	\$2.87	\$3.38	\$2.53
Transportation	Cost per mile	\$2.24	\$2.60	\$3.36
	Miles per rider	NR	294	271

Very Low   Low   Comparable   High   Very High

### Per-pupil spending by function

	District		Peer	State	National
	2008	2009	2009	2009	2007
<b>Total</b>	<b>\$17,695</b>	<b>\$19,698</b>	<b>\$10,596</b>	<b>\$7,908</b>	<b>\$9,683</b>
<b>Classroom dollars</b>	<b>\$7,929</b>	<b>\$8,760</b>	<b>\$5,393</b>	<b>\$4,497</b>	<b>\$5,903</b>
<b>Nonclassroom dollars:</b>	<b>\$9,766</b>	<b>\$10,938</b>	<b>\$5,203</b>	<b>\$3,411</b>	<b>\$3,780</b>
Administration	2,454	2,614	1,524	729	1,050
Plant Operations	2,802	3,271	1,549	920	951
Food Service	580	783	496	382	369
Transportation	2,113	2,072	552	343	406
Student Support	1,072	1,034	593	594	512
Instruction Support	743	1,158	481	431	470
Other	2	6	8	12	22

### Proposition 301

#### Teacher pay

On average, each teacher earned an additional \$3,040 in salary, and each counselor and reading coach earned between \$2,750 and \$6,400.

#### Performance pay plan goals and results

Type of goal	Goal met?
Student achievement	▲
Dropout/ graduation rates	□
Student attendance	□
Parent/student satisfaction	■
Teacher attendance	▲
Teacher professional development	▲
Teacher evaluations	■
Tutoring	▲
Other	■

■ = yes, □ = no, and ▲ = partially