

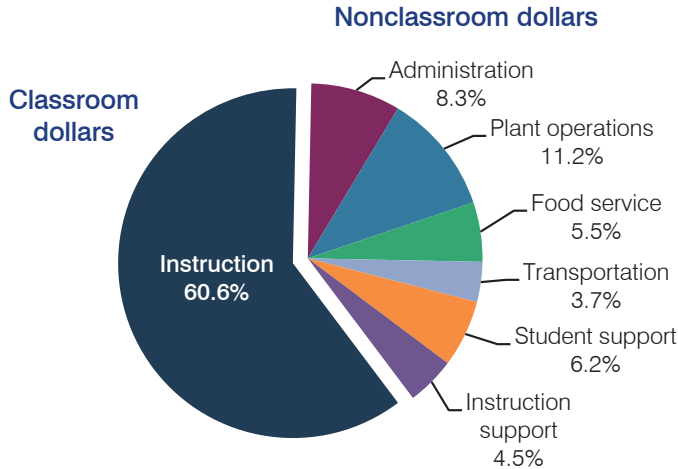
Chandler Unified School District

Maricopa County
 Efficiency peer groups 1 and T-3, Achievement peer group 2
 Legislative district(s): 12, 17 and 18

District size, location: Very large, Suburb
 Students attending: 38,752
 Number of schools: 41

OPERATIONAL EFFICIENCY

Spending by operational area



5-year spending trend

Total spending per pupil decreased by 5 percent. Spending in the classroom decreased from 62.3 to 60.6 percent. Overall, spending on plant operations and food service increased slightly, while spending on other nonclassroom areas remained fairly stable.

Cost measures relative to peer averages

Operational area	Measure	District	Peer average	State average
Administration	Cost per pupil	\$551	\$640	\$746
	Students per administrator	105	80	67
Plant operations	Cost per square foot	\$6.56	\$5.91	\$6.03
	Square footage per student	113	145	153
Food service	Cost per meal equivalent	\$3.24	\$2.62	\$2.58
Transportation	Cost per mile	\$3.96	\$4.05	\$3.55
	Cost per rider	\$1,003	\$1,000	\$1,015

Very low Low Comparable High Very high

Per pupil spending by operational area

	District		Peer average	State average	National average
	2012	2013	2013	2013	2011
Total	\$6,581	\$6,644	\$7,185	\$7,496	\$10,658
Classroom dollars	4,008	4,023	4,074	4,031	6,520
Nonclassroom dollars:	2,573	2,621	3,111	3,465	4,138
Administration	563	551	640	746	1,138
Plant operations	727	744	855	924	1,015
Food service	348	365	325	396	412
Transportation	230	244	346	369	452
Student support	400	412	571	582	593
Instruction support	305	305	374	448	528

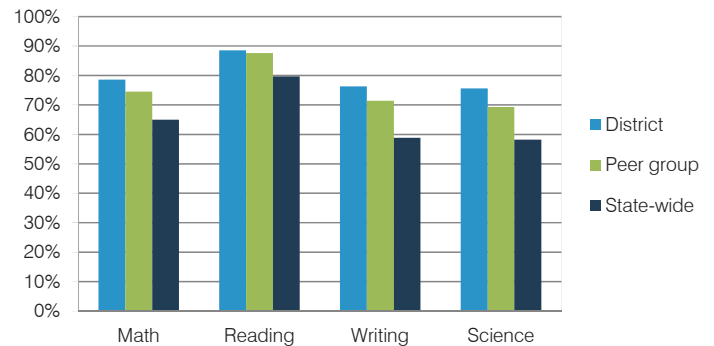
STUDENT ACHIEVEMENT, TEACHER MEASURES, AND FINANCIAL ASSESSMENT

ADE-reported district and school letter grades

District grade: **A**

Grade	Number of schools	Percentage of schools
A	27	66%
B	8	20%
C	5	12%
D	0	0%
F	0	0%
Not rated	1	2%

Students who met state standards (AIMS)



Student and teacher measures

Measure	District	Peer average	State average
Attendance rate	97%	95%	94%
Graduation rate (2012)	92%	88%	77%
Poverty rate (2012)	13%	14%	25%
Students per teacher	18.8	18.3	18.3
Average teacher salary	\$49,539	\$44,386	\$45,264
Amount from Proposition 301	\$3,898	\$4,054	\$3,784
Average years of teacher experience	10.4	11.0	10.9
Percentage of teachers in first 3 years	12%	16%	19%

Financial stress assessment

Overall financial stress level: **Low**

Measure: 2011 through 2013

Measure	Assessment
Number of students attending district	Increase
Spending exceeded operating/capital budgets	No overspending
Spending increase election results	Voter-approved
Operating reserve percentage (max. 4%), trend	1.8%, Decreasing
Years of capital reserve held	1 to 3 years
Current financial and internal control status	Compliant

Stress level

