

Chandler Unified School District

Maricopa County
Operational peer group: A
Legislative districts: 20, 21, 22

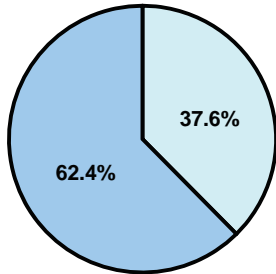
District size: Very Large
Students attending: 35,423
Number of schools: 41

OPERATIONAL EFFICIENCY

Average per-pupil spending

District
State

Classroom
\$4,478
\$4,497



Nonclassroom
\$2,699
\$3,411

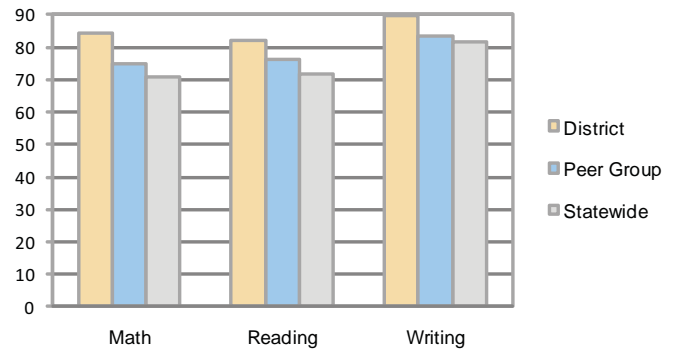
Total
\$7,177
\$7,908

5-year trend

Total spending per pupil increased by 22 percent. Spending in the classroom remained fairly stable and decreased overall from 63.6 to 62.4 percent. Spending on student and instruction support increased, while spending in other nonclassroom areas remained stable.

STUDENT ACHIEVEMENT AND TEACHER INFORMATION

Percentage of students meeting state standards (AIMS)



Adequate Yearly Progress (AYP) toward federal goals

33 schools met all applicable AYP objectives for NCLB. 7 did not because they failed to meet 1 or more of the following objectives: percentage of students tested (1); academic progress (6). 1 school was not eligible for AYP determination.

Student and teacher information

Measure	District	Peer average	State average
Attendance rate	99%	96%	95%
Graduation rate (2008)	91%	86%	75%
Poverty rate	11%	14%	19%
Student/teacher ratio	18.3	17.5	17.1
Average teacher salary	\$52,977	\$50,748	\$45,209
Average years' experience	8.3	10.5	8.3
Percent of teachers in first 3 years	21%	20%	16%

District's cost measures relative to peer group

Operational Area	Measure	District	Peer Average	State Average
Administration	Cost per pupil	\$582	\$639	\$729
	Students per administrator	95	77	66
Plant Operations	Cost per square foot	\$6.39	\$6.38	\$6.40
	Square footage per student	120	138	144
Food Service	Cost per meal equivalent	\$3.13	\$2.49	\$2.53
Transportation	Cost per mile	\$3.73	\$4.22	\$3.36
	Miles per rider	243	298	271

Very Low Low Comparable High Very High

Per-pupil spending by function

	District		Peer	State	National
	2008	2009	2009	2009	2007
Total	\$7,007	\$7,177	\$7,781	\$7,908	\$9,683
Classroom dollars	\$4,363	\$4,478	\$4,577	\$4,497	\$5,903
Nonclassroom dollars:	\$2,644	\$2,699	\$3,204	\$3,411	\$3,780
Administration	564	582	639	729	1,050
Plant Operations	746	769	881	920	951
Food Service	324	347	322	382	369
Transportation	242	230	330	343	406
Student Support	418	398	616	594	512
Instruction Support	343	364	398	431	470
Other	7	9	18	12	22

Proposition 301

Teacher pay

On average, each teacher, librarian, speech pathologist, and counselor earned between \$5,502 and \$6,769 in additional salary.

Performance pay plan goals and results

Type of goal	Goal met?
Student achievement	■
Dropout/ graduation rates	■
Student attendance	▲
Parent/student satisfaction	■
Teacher attendance	■
Teacher professional development	■
Teacher evaluations	■
Tutoring	■
Other	■

■ = yes, □ = no, and ▲ = partially