

# Chinle Unified School District

Apache County

Efficiency peer groups 4 and T-9, Achievement peer group 7<sup>1</sup>

Legislative district(s): 7

District size, location:

Medium-large, Town

Students attending:

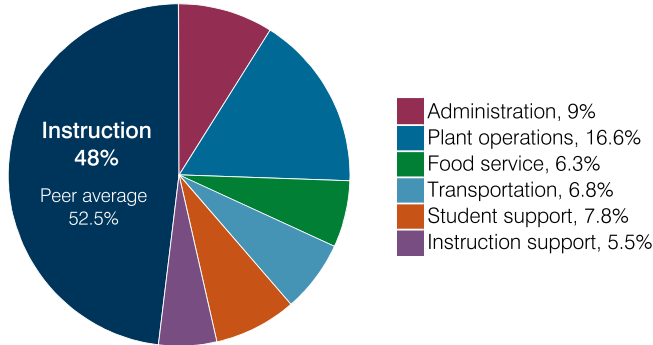
3,408

Number of schools:

7

## OPERATIONAL EFFICIENCY

### Spending by operational area



### Efficiency measures relative to peer averages

Operational area	Measure	District	Peer average	State average
Administration	Cost per pupil	\$1,221	\$837	\$860
	Students per administrative position	53	69	66
Plant operations	Cost per square foot	\$7.90	\$5.61	\$6.34
	Square footage per student	287	184	156
Food service	Cost per meal	\$3.40	\$3.16	\$3.02
Transportation	Cost per mile	\$2.90	\$2.62	\$4.05
	Cost per rider	\$1,234	\$1,457	\$1,301

Very low
Low
Comparable
High
Very high

### Per pupil spending

Spending by area	District		Peer average 2018	State average 2018
	2017	2018		
Instruction	\$ 6,629	\$ 6,523	\$ 4,194	\$ 4,480
Administration	1,255	1,221	837	860
Plant operations	2,208	2,266	1,004	988
Food service	752	858	421	425
Transportation	999	918	418	388
Student support	1,069	1,058	643	693
Instruction support	741	753	480	462
<b>Total operational</b>	<b>13,653</b>	<b>13,597</b>	<b>7,997</b>	<b>8,296</b>
Land and buildings	959	1,169	570	827
Equipment	1,239	672	389	409
Interest	0	0	200	228
Other	63	83	69	169
<b>Total nonoperational</b>	<b>2,261</b>	<b>1,924</b>	<b>1,228</b>	<b>1,633</b>
<b>Total per pupil spending</b>	<b>\$ 15,914</b>	<b>\$ 15,521</b>	<b>\$ 9,225</b>	<b>\$ 9,929</b>

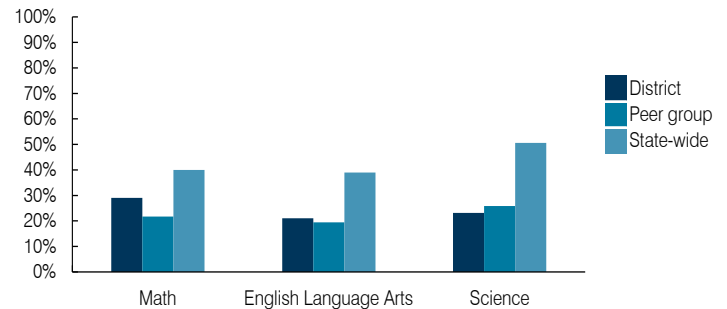
<sup>1</sup> See Appendix A for information such as districts included in each peer group and Appendix B for sources and methodology.

## STUDENT ACHIEVEMENT, STUDENT AND TEACHER MEASURES, AND REVENUES

### ADE-assigned school letter grades

Grade	Number of schools	Percentage of schools
A	0	0%
B	2	29%
C	4	57%
D	1	14%
F	0	0%

### Students who passed State assessments



### Student and teacher measures

Measure	District	Peer average	State average
Attendance rate	90%	91%	94%
Graduation rate (2017)	63%	76%	78%
Poverty rate (2017)	48%	41%	19%
Special education population	12%	12%	12%
Students per teacher	16.6	15.8	18.4
Average teacher salary	\$61,181	\$48,537	\$48,951
Amount from Prop 301	\$595	\$5,191	\$6,411
Average years of teacher experience	13.7	12.5	11.4
Percentage of teachers in first 3 years	11%	18%	19%

### Per pupil revenues

Revenues by source	District		Peer average 2018	State average 2018
	2017	2018		
Federal	\$ 10,453	\$ 10,035	\$ 2,385	\$ 1,317
State	6,499	6,366	4,222	4,011
Local	1,192	1,038	3,291	4,592
<b>Total per pupil revenues</b>	<b>\$ 18,144</b>	<b>\$ 17,439</b>	<b>\$ 9,898</b>	<b>\$ 9,920</b>

### Select revenues from common sources

Source	District	Peer average	State average
Equalization formula funding	\$ 5,975	\$ 6,040	\$ 5,443
Grants	3,014	3,128	1,552
Donations and tax credits	54	42	63

### Select revenues from less common sources

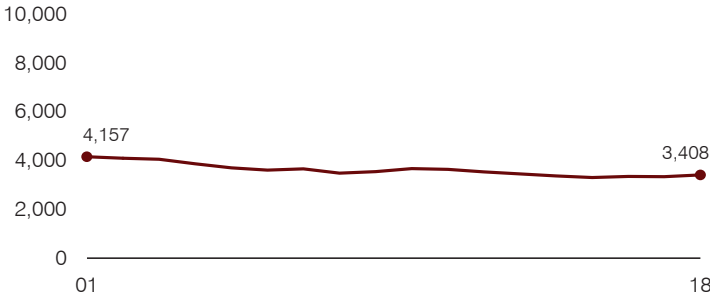
Source	District	Peer average	Number of peers receiving
Desegregation	\$ 0	\$ 0	1 of 17
Small school adjustment	0	0	0 of 17
Federal impact aid	7,730	6,995	6 of 17
Voter-approved levy increases	0	0	13 of 17

**Instructional spending percentage**

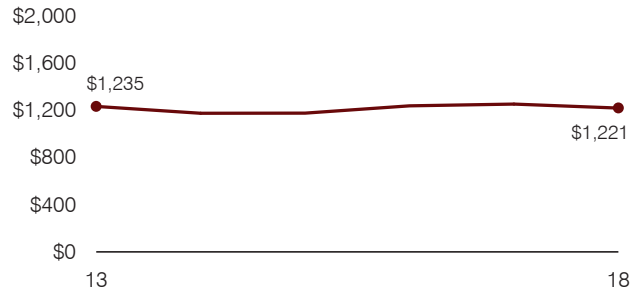
Year: 2001 2002 2003 2004 2005 2006 2007 2008 2009 2010 2011 2012 2013 2014 2015 2016 2017 2018  
 Percentage: 47.7 48.0 50.2 50.8 51.1 49.6 48.3 48.6 49.4 47.0 47.5 49.0 48.4 48.4 46.6 49.9 48.5 48.0

**TRENDS AND FINANCIAL STRESS ASSESSMENT**  
 Fiscal years as indicated

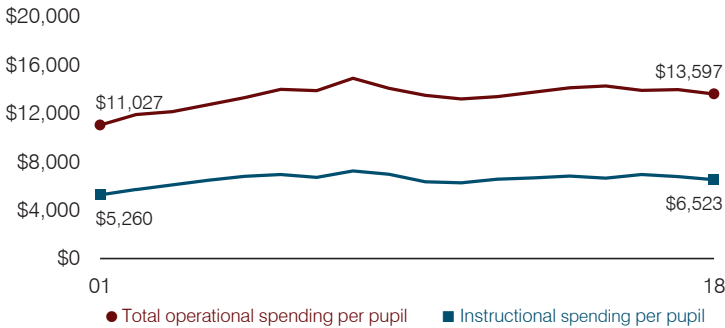
**Students attending**



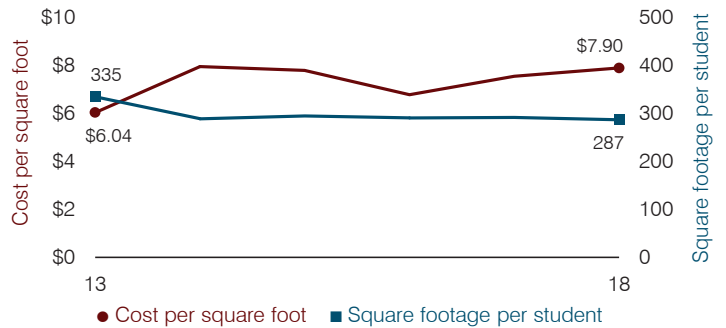
**Administrative cost per pupil**



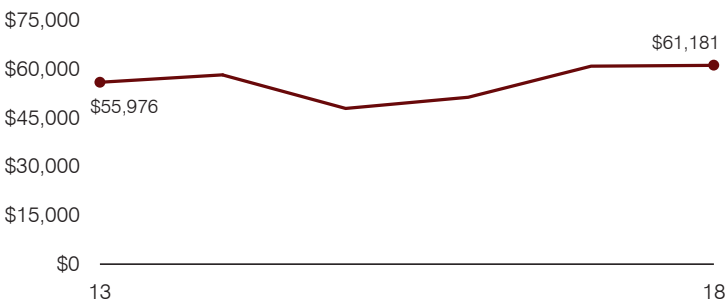
**Total operational and instructional spending per pupil (inflation adjusted to 2018 dollars)**



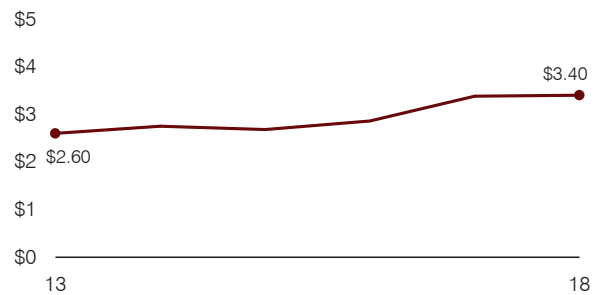
**Plant cost per square foot and square footage per student**



**Average teacher salary**



**Food service cost per meal**



**Financial stress assessment**

Overall financial stress level: **Low**

Measure: 2016 through 2018	Assessment
Change in number of district students	Steady
Spending exceeded operating/capital budgets	Capital
Spending increase election results	No election held
Operating reserve percentage, Trend	3.7%, Varying
Years of capital reserve held	Impact Aid Fund reserve
Current financial and internal control status	Compliant

Low
Moderate
High

**Transportation costs per mile and per rider**

