

Chinle Unified School District

Apache County
Operational peer group: D
Legislative districts: 2

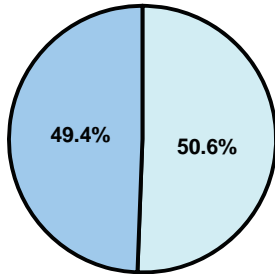
District size: Medium-Large
Students attending: 3,549
Number of schools: 7

OPERATIONAL EFFICIENCY

Average per-pupil spending

District
State

Classroom
\$6,016
\$4,497



Nonclassroom
\$6,160
\$3,411

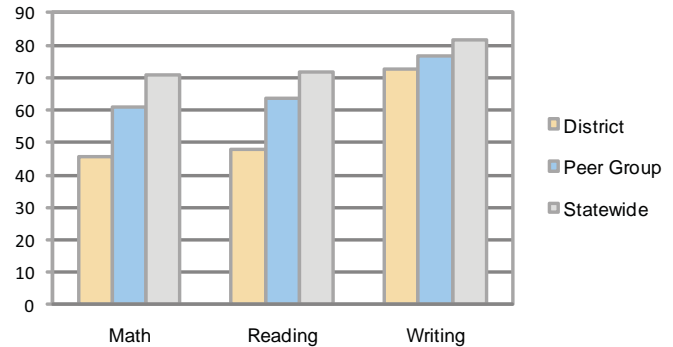
Total
\$12,176
\$7,908

5-year trend

Total spending per pupil increased by 28 percent. Spending in the classroom varied year to year and decreased overall from 50.8 to 49.4 percent. Spending on administration and instruction support increased, while spending in other nonclassroom areas varied year to year.

STUDENT ACHIEVEMENT AND TEACHER INFORMATION

Percentage of students meeting state standards (AIMS)



Adequate Yearly Progress (AYP) toward federal goals

2 schools met all applicable AYP objectives for NCLB. 4 did not because some students did not demonstrate sufficient academic progress. 1 school did not receive an AYP determination.

Student and teacher information

Measure	District	Peer average	State average
Attendance rate	93%	94%	95%
Graduation rate (2008)	72%	75%	75%
Poverty rate	46%	29%	19%
Student/teacher ratio	13.7	17.6	17.1
Average teacher salary	\$50,074	\$44,586	\$45,209
Average years' experience	14.0	10.4	8.3
Percent of teachers in first 3 years	10%	23%	16%

District's cost measures relative to peer group

Operational Area	Measure	District	Peer Average	State Average
Administration	Cost per pupil	\$1,112	\$775	\$729
	Students per administrator	44	61	66
Plant Operations	Cost per square foot	\$6.60	\$6.13	\$6.40
	Square footage per student	280	168	144
Food Service	Cost per meal equivalent	\$1.84	\$2.64	\$2.53
Transportation	Cost per mile	\$2.78	\$2.96	\$3.36
	Miles per rider	371	307	271

Very Low Low Comparable High Very High

Per-pupil spending by function

	District		Peer	State	National
	2008	2009	2009	2009	2007
Total	\$12,708	\$12,176	\$7,896	\$7,908	\$9,683
Classroom dollars	\$6,175	\$6,016	\$4,312	\$4,497	\$5,903
Nonclassroom dollars:	\$6,533	\$6,160	\$3,584	\$3,411	\$3,780
Administration	991	1,112	775	729	1,050
Plant Operations	1,940	1,850	1,032	920	951
Food Service	630	436	365	382	369
Transportation	960	909	397	343	406
Student Support	1,755	1,506	629	594	512
Instruction Support	257	347	380	431	470
Other	0	0	6	12	22

Proposition 301

Teacher pay

On average, each teacher earned \$5,379 in additional salary, and each aide, librarian, speech pathologist, counselor, coordinator, dean, classified instructor, and library clerk earned between \$2,098 and \$6,032.

Performance pay plan goals and results

Type of goal	Goal met?
Student achievement	■
Dropout/ graduation rates	
Student attendance	
Parent/student satisfaction	
Teacher attendance	
Teacher professional development	
Teacher evaluations	
Tutoring	
Other	

■ = yes, □ = no, and ▴ = partially