

Classroom Dollars and Proposition 301 Results

Chinle Unified School District

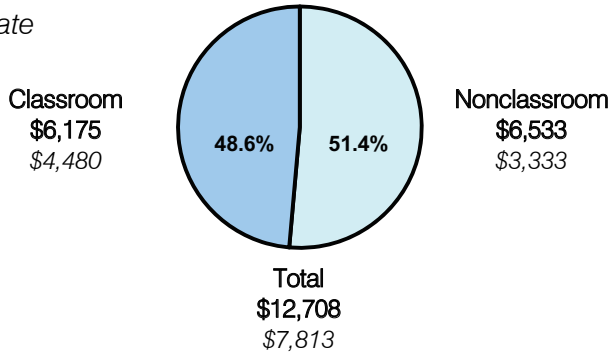
Apache County

District size: Medium
 Students attending: 3,484
 Number of schools: 7
 Number of certified teachers: 247

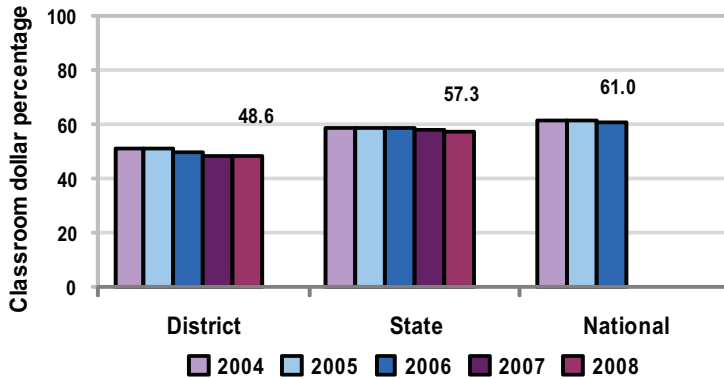
Classroom Dollars

Fiscal year 2008 averages per pupil

District
 State



5-year comparison



Expenditures by function

	Percentage					State 2008	National 2006
	2004	2005	2006	2007	2008		
Classroom dollars	50.8	51.1	49.6	48.3	48.6	57.3	61.0
Nonclassroom dollars:							
Administration	7.3	7.3	7.3	8.2	7.8	9.2	10.8
Plant operations	14.5	13.1	14.7	14.3	15.2	11.3	9.9
Food service	5.5	5.8	5.0	5.2	5.0	4.8	3.8
Transportation	7.1	7.7	7.3	7.5	7.6	4.4	4.2
Student support	12.8	13.0	14.5	14.8	13.8	7.4	5.2
Instruction support	1.7	2.0	1.6	1.7	2.0	5.4	4.9
Other	0.3					0.2	0.2

Comparative Information

	District			State
	2006	2007	2008	2008
Student/teacher ratio	14.3	14.8	14.1	17.3
Average teacher salary	\$43,413	\$44,689	\$47,497	\$44,967
Average years' experience	10.1	10.4	10.4	8.1

Classroom dollar ranking: 189 of 230 districts.

Proposition 301

District-reported 2008 results

Teacher pay

- On average, each teacher, librarian, speech pathologist, counselor, JROTC instructor, and school improvement coordinator earned between \$3,243 and \$5,378 in additional salary, and each instructional aide, library clerk, and dean of students earned between \$1,684 and \$2,733.

Performance

- The District accomplished its goals, which were the same as the prior fiscal year's goals and were based on school performance.
- Students met school-established goals for achievement on vocabulary, reading comprehension, and math tests.

Menu

- Monies continued to be used to compensate eligible employees for attending up to 5 professional involvement days, which were focused on addressing each site's school improvement plan.