

# Classroom Dollars and Proposition 301 Results

## Chinle Unified School District

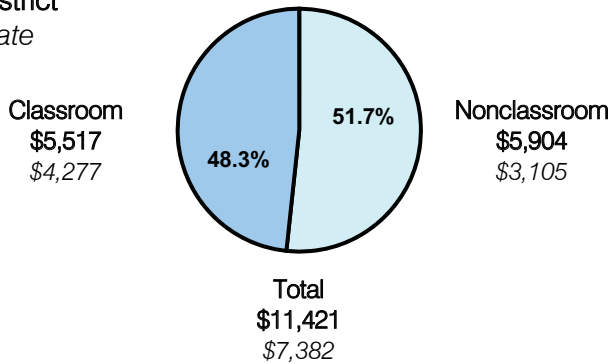
Apache County

District size: Medium  
 Students attending: 3,659  
 Number of schools: 7  
 Number of certified teachers: 247

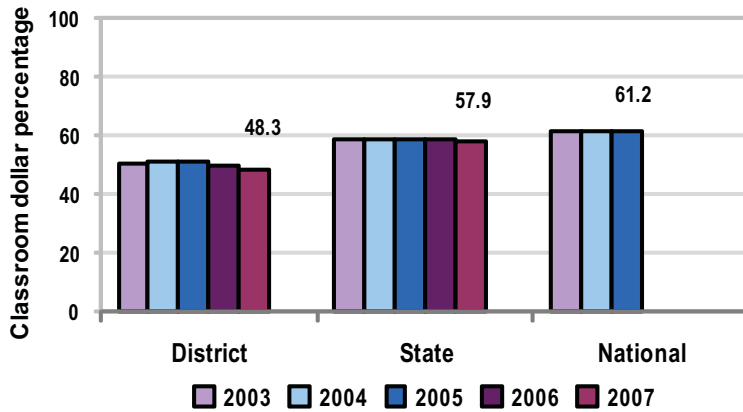
### Classroom Dollars

Fiscal year 2007 averages per pupil

District  
 State



5-year comparison



Expenditures by function

	District					State 2007	National 2005
	2003	2004	2005	2006	2007		
Classroom dollars	50.2	50.8	51.1	49.6	48.3	57.9	61.2
Nonclassroom dollars:							
Administration	7.8	7.3	7.3	7.3	8.2	9.5	11.0
Plant operations	15.1	14.5	13.1	14.7	14.3	11.3	9.6
Food service	5.8	5.5	5.8	5.0	5.2	4.7	3.9
Transportation	6.8	7.1	7.7	7.3	7.5	4.3	4.1
Student support	11.8	12.8	13.0	14.5	14.8	7.3	5.2
Instruction support	2.5	1.7	2.0	1.6	1.7	4.8	4.8
Other		0.3				0.2	0.2

### Comparative Information

	District			State 2007
	2005	2006	2007	
Student/teacher ratio	14.1	14.3	14.8	17.4
Average teacher salary	\$42,902	\$43,413	\$44,689	\$43,833
Average years' experience	9.8	10.1	10.4	8.1

Classroom dollar ranking: 186 of 229 districts.

### Proposition 301

#### District-reported 2007 results

##### Teacher pay

- On average, each teacher, librarian, speech pathologist, counselor, and school improvement specialist earned between \$4,287 and \$4,447 in additional salary, and each audiologist earned an additional \$1,800.

##### Performance

- The District accomplished its goals, which were the same as the prior two fiscal years' goals and were based on school performance.
- Students met school-established goals for achievement on vocabulary, reading comprehension, and math tests.

##### Menu

- Monies continued to be used to compensate eligible employees for attending up to 5 professional involvement days, which were focused on addressing each site's school improvement plan.