

Chino Valley Unified School District

Yavapai County
Operational peer group: D
Legislative districts: 1

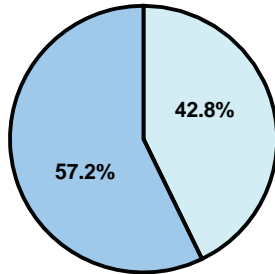
District size: Medium-Large
Students attending: 2,603
Number of schools: 4

OPERATIONAL EFFICIENCY

Average per-pupil spending

District
State

Classroom
\$4,029
\$4,497



Nonclassroom
\$3,017
\$3,411

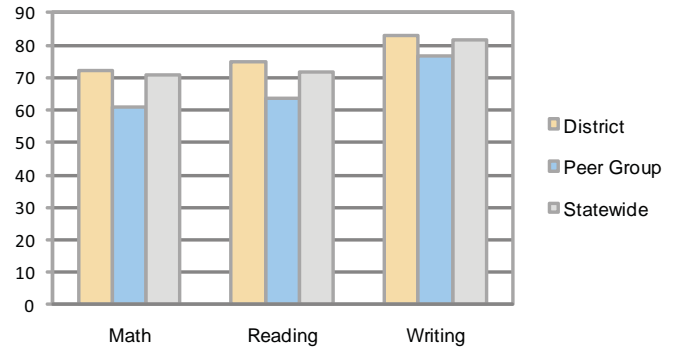
Total
\$7,046
\$7,908

5-year trend

Total spending per pupil increased by 30 percent. Spending in the classroom remained varied year to year and decreased overall from 57.9 to 57.2 percent. Spending on student support increased, while spending in other nonclassroom areas remained fairly stable.

STUDENT ACHIEVEMENT AND TEACHER INFORMATION

Percentage of students meeting state standards (AIMS)



Adequate Yearly Progress (AYP) toward federal goals

4 schools met all applicable AYP objectives for NCLB.

District's cost measures relative to peer group

Operational Area	Measure	District	Peer Average	State Average
Administration	Cost per pupil	\$848	\$775	\$729
	Students per administrator	68	61	66
Plant Operations	Cost per square foot	\$5.53	\$6.13	\$6.40
	Square footage per student	127	168	144
Food Service	Cost per meal equivalent	\$2.57	\$2.64	\$2.53
Transportation	Cost per mile	\$2.12	\$2.96	\$3.36
	Miles per rider	297	307	271

Very Low Low Comparable High Very High

Student and teacher information

Measure	District	Peer average	State average
Attendance rate	93%	94%	95%
Graduation rate (2008)	73%	75%	75%
Poverty rate	21%	29%	19%
Student/teacher ratio	17.8	17.6	17.1
Average teacher salary	\$42,437	\$44,586	\$45,209
Average years' experience	9.5	10.4	8.3
Percent of teachers in first 3 years	19%	23%	16%

Proposition 301

Teacher pay

On average, each teacher earned \$4,935 in additional salary, and each librarian, speech pathologist, counselor, and psychologist earned between \$5,057 and \$6,416.

Performance pay plan goals and results

Type of goal	Goal met?
Student achievement	■
Dropout/ graduation rates	■
Student attendance	■
Parent/student satisfaction	■
Teacher attendance	■
Teacher professional development	■
Teacher evaluations	■
Tutoring	■
Other	■

■ = yes, □ = no, and ▮ = partially

Per-pupil spending by function

	District		Peer	State	National
	2008	2009	2009	2009	2007
Total	\$6,970	\$7,046	\$7,896	\$7,908	\$9,683
Classroom dollars	\$4,030	\$4,029	\$4,312	\$4,497	\$5,903
Nonclassroom dollars:	\$2,940	\$3,017	\$3,584	\$3,411	\$3,780
Administration	821	848	775	729	1,050
Plant Operations	669	703	1,032	920	951
Food Service	426	446	365	382	369
Transportation	431	390	397	343	406
Student Support	425	467	629	594	512
Instruction Support	168	163	380	431	470
Other	0	0	6	12	22