

Classroom Dollars and Proposition 301 Results

Clarkdale-Jerome Elementary School District

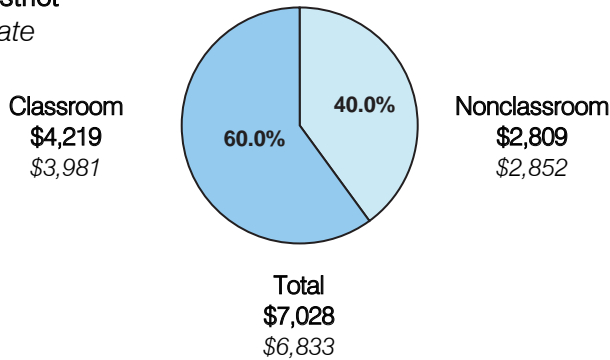
Yavapai County

District size: Small
 Students attending: 374
 Number of schools: 1
 Number of certified teachers: 22

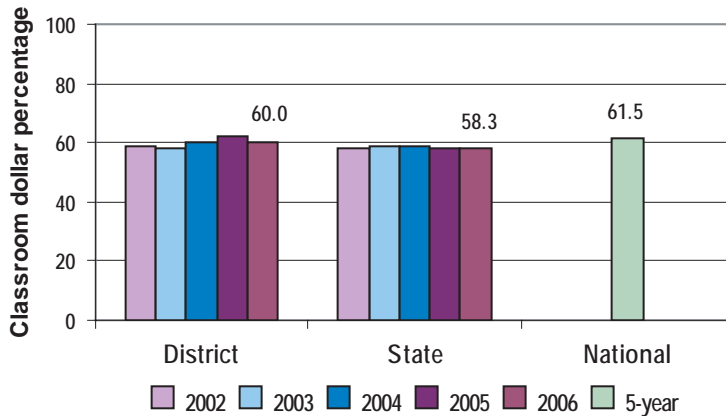
Classroom Dollars

Fiscal year 2006 averages per pupil

District
 State



5-year comparison



Expenditures by function

	District					State 2006	National 5-year
	2002	2003	2004	2005	2006		
Classroom dollars	58.7	58.3	60.2	62.5	60.0	58.3	61.5
Nonclassroom dollars:							
Administration	8.0	8.5	8.4	7.6	8.4	9.4	11.0
Plant operations	9.5	9.8	9.4	9.8	10.3	11.2	9.6
Food service	7.4	5.9	5.2	5.3	5.2	4.7	3.9
Transportation	4.8	4.5	4.7	4.4	5.0	4.2	4.0
Student support	8.7	8.9	8.7	7.7	8.4	7.2	5.1
Instruction support	2.9	4.1	3.4	2.7	2.7	4.8	4.7
Other						0.2	0.2

Comparative Information

	District			State 2006
	2004	2005	2006	
Student/teacher ratio	17.8	16.9	17.4	17.7
Average teacher salary	\$40,896	\$43,082	\$46,314	\$42,967
Average years' experience	10.6	10.8	11.0	8.3

Classroom dollar ranking: 42 of 229 districts.

Proposition 301

District-reported 2006 results

Teacher pay

- On average, each teacher and counselor earned an additional \$6,233 in salary.

Performance

- The District accomplished its goals, which were the same as the prior fiscal year's goals and were based on school performance.
- Students achieved at least 90 percent growth on pre- and post-test assessments.
- Parent satisfaction surveys showed at least a 90 percent satisfaction rate.

Menu

- Monies were used primarily to increase eligible employee compensation.
- Monies continued to be used to pay for 3 part-time instructional aides to provide AIMS intervention activities.