

Clarkdale-Jerome Elementary School District

Yavapai County

Efficiency peer groups 10 and T-6, Achievement peer group 18

Legislative district(s): 1 and 6

District size, location:

Small, Town

Students attending:

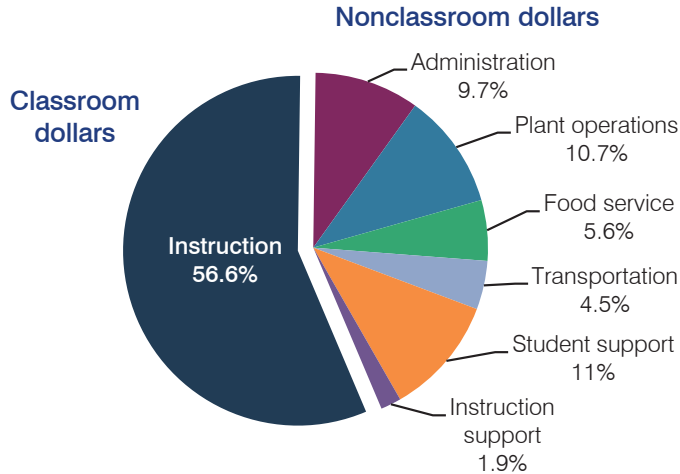
430

Number of schools:

1

OPERATIONAL EFFICIENCY

Spending by operational area



5-year spending trend

Total spending per pupil decreased by 3 percent. Spending in the classroom decreased from 61 to 56.6 percent. Overall, spending on administration increased substantially and spending on food service and student support increased slightly. Spending on other nonclassroom areas remained fairly stable.

Cost measures relative to peer averages

Operational area	Measure	District	Peer average	State average
Administration	Cost per pupil	\$732	\$1,130	\$746
	Students per administrator	115	55	67
Plant operations	Cost per square foot	\$7.23	\$6.14	\$6.03
	Square footage per student	112	157	153
Food service	Cost per meal equivalent	\$2.78	\$2.74	\$2.58
Transportation	Cost per mile	\$4.71	\$3.58	\$3.55
	Cost per rider	\$479	\$462	\$1,015

Very low Low Comparable High Very high

Per pupil spending by operational area

	District		Peer average	State average	National average
	2012	2013	2013	2013	2011
Total	\$6,885	\$7,572	\$8,518	\$7,496	\$10,658
Classroom dollars	3,960	4,284	4,624	4,031	6,520
Nonclassroom dollars:	2,925	3,288	3,894	3,465	4,138
Administration	604	732	1,130	746	1,138
Plant operations	779	810	976	924	1,015
Food service	381	427	511	396	412
Transportation	301	340	537	369	452
Student support	732	831	499	582	593
Instruction support	128	148	241	448	528

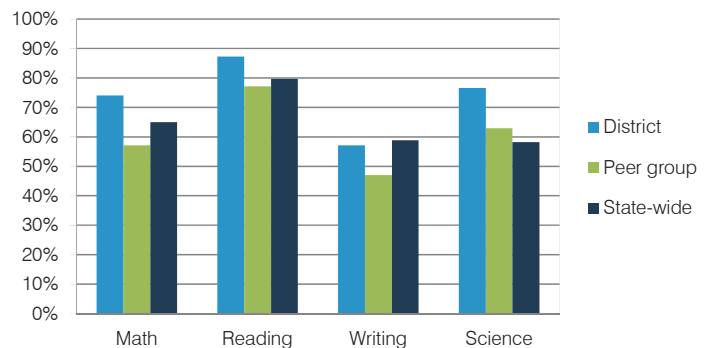
STUDENT ACHIEVEMENT, TEACHER MEASURES, AND FINANCIAL ASSESSMENT

ADE-reported district and school letter grades

District grade: **B**

Grade	Number of schools	Percentage of schools
A	0	0%
B	1	100%
C	0	0%
D	0	0%
F	0	0%
Not rated	0	0%

Students who met state standards (AIMS)



Student and teacher measures

Measure	District	Peer average	State average
Attendance rate	95%	95%	94%
Graduation rate (2012)	N/A	N/A	N/A
Poverty rate (2012)	22%	24%	25%
Students per teacher	19.1	12.4	18.3
Average teacher salary	\$47,264	\$45,242	\$45,264
Amount from Proposition 301	\$4,732	\$2,827	\$3,784
Average years of teacher experience	15.7	13.6	10.9
Percentage of teachers in first 3 years	9%	12%	19%

Financial stress assessment

Overall financial stress level: **Low**

Measure: 2011 through 2013

Assessment

Number of students attending district	Increase
Spending exceeded operating/capital budgets	No overspending
Spending increase election results	Voter-approved
Operating reserve percentage (max. 4%), trend	3.7%, Steady
Years of capital reserve held	More than 3 years
Current financial and internal control status	Compliant

Stress level

