

Clarkdale-Jerome Elementary School District

Yavapai County
Operational peer group: K
Legislative districts: 1

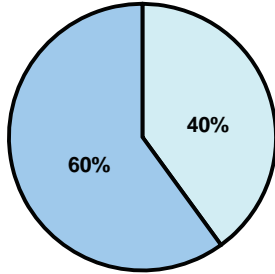
District size: Small
Students attending: 367
Number of schools: 1

OPERATIONAL EFFICIENCY

Average per-pupil spending

District
State

Classroom
\$5,243
\$4,497



Nonclassroom
\$3,489
\$3,411

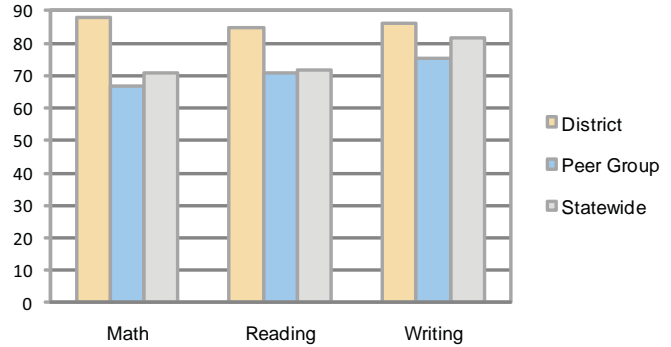
Total
\$8,732
\$7,908

5-year trend

Total spending per pupil increased by 45 percent. Spending in the classroom varied year to year and decreased slightly overall from 60.2 to 60 percent. Spending on plant operations and student support increased significantly, while spending in other nonclassroom areas decreased.

STUDENT ACHIEVEMENT AND TEACHER INFORMATION

Percentage of students meeting state standards (AIMS)



Adequate Yearly Progress (AYP) toward federal goals

The District's school met all applicable AYP objectives for NCLB.

Student and teacher information

Measure	District	Peer average	State average
Attendance rate	95%	95%	95%
Graduation rate (2008)	N/A	79%	75%
Poverty rate	16%	14%	19%
Student/teacher ratio	16.7	14.7	17.1
Average teacher salary	\$51,951	\$43,600	\$45,209
Average years' experience	15.0	10.7	8.3
Percent of teachers in first 3 years	9%	23%	16%

District's cost measures relative to peer group

Operational Area	Measure	District	Peer Average	State Average
Administration	Cost per pupil	\$659	\$1,288	\$729
	Students per administrator	245	70	66
Plant Operations	Cost per square foot	\$6.70	\$6.94	\$6.40
	Square footage per student	131	149	144
Food Service	Cost per meal equivalent	\$2.53	\$3.05	\$2.53
Transportation	Cost per mile	\$3.91	\$2.22	\$3.36
	Miles per rider	109	268	271

Very Low Low Comparable High Very High

Per-pupil spending by function

	District		Peer 2009	State 2009	National 2007
	2008	2009			
Total	\$7,790	\$8,732	\$9,786	\$7,908	\$9,683
Classroom dollars	\$4,749	\$5,243	\$5,344	\$4,497	\$5,903
Nonclassroom dollars:	\$3,041	\$3,489	\$4,442	\$3,411	\$3,780
Administration	723	659	1,288	729	1,050
Plant Operations	808	878	1,162	920	951
Food Service	371	383	582	382	369
Transportation	321	325	512	343	406
Student Support	658	1,085	586	594	512
Instruction Support	160	159	311	431	470
Other	0	0	1	12	22

Proposition 301

Teacher pay

On average, each teacher and counselor earned between \$4,816 and \$5,920 in additional salary.

Performance pay plan goals and results

Type of goal	Goal met?
Student achievement	■
Dropout/ graduation rates	
Student attendance	
Parent/student satisfaction	■
Teacher attendance	
Teacher professional development	
Teacher evaluations	
Tutoring	
Other	

■ = yes, □ = no, and ▴ = partially