

Classroom Dollars and Proposition 301 Results

Clarkdale-Jerome Elementary School District

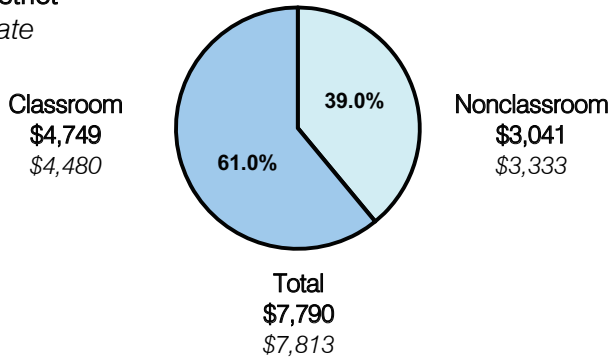
Yavapai County

District size: Small
 Students attending: 396
 Number of schools: 1
 Number of certified teachers: 23

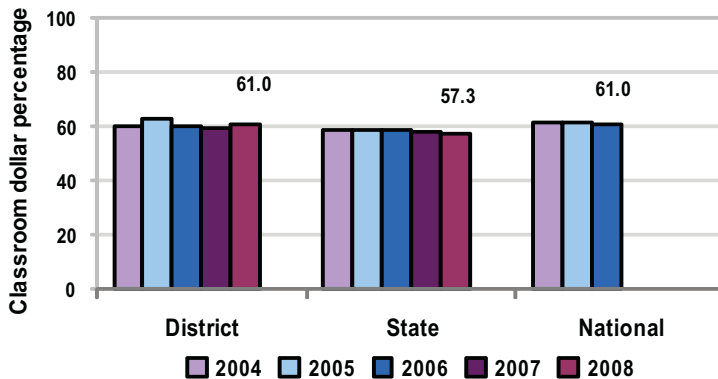
Classroom Dollars

Fiscal year 2008 averages per pupil

District
 State



5-year comparison



Expenditures by function

	Percentage					State 2008	National 2006
	2004	2005	2006	2007	2008		
Classroom dollars	60.2	62.5	60.0	59.1	61.0	57.3	61.0
Nonclassroom dollars:							
Administration	8.4	7.6	8.4	8.4	7.6	9.2	10.8
Plant operations	9.4	9.8	10.3	11.4	10.4	11.3	9.9
Food service	5.2	5.3	5.2	4.8	4.8	4.8	3.8
Transportation	4.7	4.4	5.0	4.1	4.1	4.4	4.2
Student support	8.7	7.7	8.4	10.1	10.1	7.4	5.2
Instruction support	3.4	2.7	2.7	2.1	2.0	5.4	4.9
Other						0.2	0.2

Comparative Information

	District			State
	2006	2007	2008	2008
Student/teacher ratio	17.4	16.8	17.2	17.3
Average teacher salary	\$46,314	\$47,855	\$51,000	\$44,967
Average years' experience	11.0	10.6	10.8	8.1

Classroom dollar ranking: 28 of 230 districts.

Proposition 301

District-reported 2008 results

Teacher pay

- On average, each teacher and counselor earned \$6,452 in additional salary.

Performance

- The District accomplished its goals, which were the same as the prior fiscal year's goals and were based on school performance.
- More than 90 percent of students demonstrated at least 1 year's growth on standardized tests.
- 94 percent of parents responding to a survey reported that they were satisfied with the District's performance.

Menu

- Monies were used primarily to increase eligible employee compensation.
- Monies continued to be used to pay for 3 part-time instructional aides to provide AIMS intervention activities.