

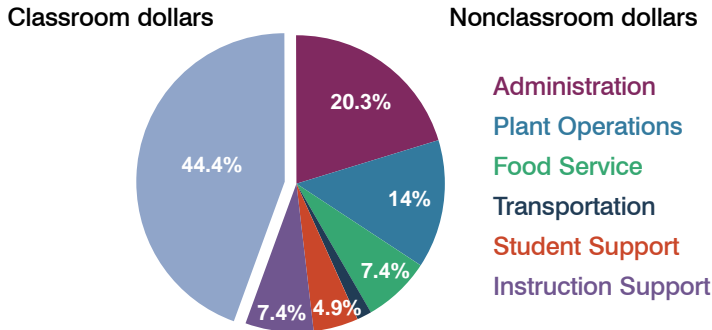
# Clifton Unified School District

Greenlee County  
Peer groups: Efficiency 7, Achievement 15  
Legislative district(s): 5

District size: Very Small  
Students attending: 109  
Number of schools: 2

## OPERATIONAL EFFICIENCY

### Spending by function

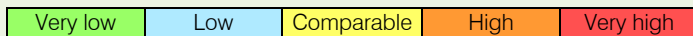


### 5-year trend

Total spending per pupil increased by 53 percent. Spending in the classroom was very inconsistent year to year, decreasing significantly overall from 51.1 to 44.4 percent. Spending on administration and instruction support increased significantly, while spending in other nonclassroom areas varied year to year.

### District's cost measures relative to peer group

Operational Area	Measure	District	Peer Average	State Average
Administration	Cost per pupil	\$2,390	\$2,555	\$721
	Students per administrator	18	28	66
Plant Operations	Cost per square foot	\$1.97	\$4.77	\$6.25
	Square footage per student	NR	509	146
Food Service	Cost per meal equivalent	\$6.93	\$4.98	\$2.41
Transportation	Cost per mile	\$1.31	\$1.78	\$3.35
	Miles per rider	NR	1,443	282

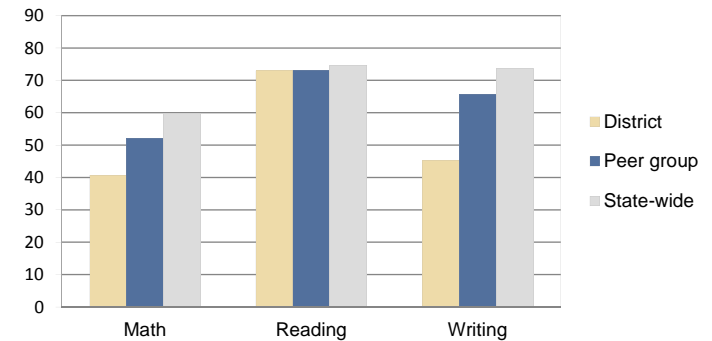


### Per-pupil spending by function

	District		Peer 2010	State 2010	National 2008
	2009	2010			
<b>Total</b>	<b>\$9,856</b>	<b>\$11,796</b>	<b>\$16,816</b>	<b>\$7,609</b>	<b>\$10,297</b>
<b>Classroom dollars</b>	<b>\$4,238</b>	<b>\$5,241</b>	<b>\$8,229</b>	<b>\$4,253</b>	<b>\$6,262</b>
<b>Nonclassroom dollars:</b>	<b>\$5,618</b>	<b>\$6,555</b>	<b>\$8,587</b>	<b>\$3,356</b>	<b>\$4,035</b>
Administration	2,025	2,390	2,555	721	1,109
Plant Operations	1,543	1,652	2,717	914	1,003
Food Service	1,000	876	813	366	390
Transportation	219	190	1,262	342	438
Student Support	424	574	751	581	556
Instruction Support	407	873	489	432	539

## STUDENT ACHIEVEMENT AND TEACHER INFORMATION

### Percentage of students meeting state standards (AIMS)



### Adequate Yearly Progress (AYP) toward federal goals

1 school met all applicable AYP objectives for NCLB. 1 school did not because its graduation rate was not sufficient.

### Student and teacher information

Measure	District	Peer Average	State Average
Attendance rate	93%	94%	94%
Graduation rate (2009)	N/A	84%	76%
Poverty rate (2009)	11%	8%	21%
Student/teacher ratio	10.9	15.1	17.9
Average teacher salary	NR	\$38,015	\$47,077
Average years' experience	7.6	9.2	10.6
Percent of teachers in first 3 years	50%	27%	20%

### Proposition 301

#### Teacher and other staff pay

On average, each teacher earned \$4,301 in additional pay.

#### Performance pay plan goals and results

Type of goal	Goal met?
Student achievement	■
Dropout/graduation rates	-
Student attendance	-
Parent/student satisfaction	-
Teacher attendance	-
Teacher professional development	-
Teacher evaluations	-
Tutoring	-
Other	-

■ = yes, □ = no, ▴ = partially, and - = no goal set