

Clifton Unified School District

Greenlee County
Operational peer group: G
Legislative districts: 5

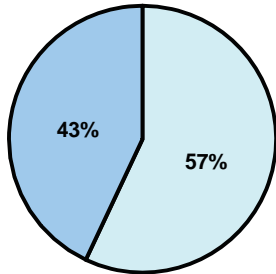
District size: Very Small
Students attending: 134
Number of schools: 2

OPERATIONAL EFFICIENCY

Average per-pupil spending

District
State

Classroom
\$4,238
\$4,497



Nonclassroom
\$5,618
\$3,411

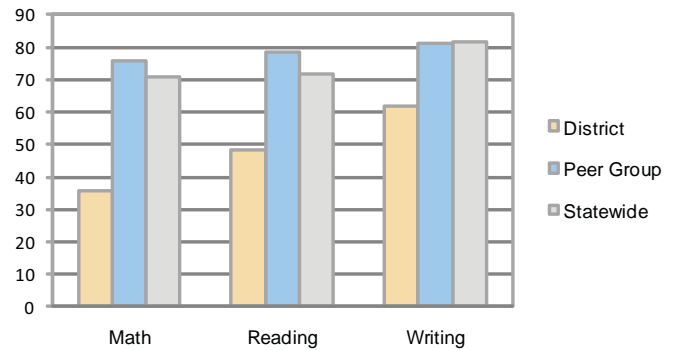
Total
\$9,856
\$7,908

5-year trend

Total spending per pupil increased by 38 percent. Spending in the classroom was very inconsistent year to year and decreased significantly overall from 53.1 to 43 percent. Spending in all nonclassroom areas increased.

STUDENT ACHIEVEMENT AND TEACHER INFORMATION

Percentage of students meeting state standards (AIMS)



Adequate Yearly Progress (AYP) toward federal goals

1 school met all applicable AYP objectives for NCLB. 1 did not because its graduation rate was not sufficient.

District's cost measures relative to peer group

| Operational Area | Measure | District | Peer Average | State Average |
|------------------|----------------------------|----------|--------------|---------------|
| Administration | Cost per pupil | \$2,025 | \$2,646 | \$729 |
| | Students per administrator | 27 | 26 | 66 |
| Plant Operations | Cost per square foot | N/A | \$4.99 | \$6.40 |
| | Square footage per student | NR | 535 | 144 |
| Food Service | Cost per meal equivalent | \$6.03 | \$4.15 | \$2.53 |
| Transportation | Cost per mile | \$1.60 | \$1.93 | \$3.36 |
| | Miles per rider | 132 | 772 | 271 |

Very Low Low Comparable High Very High

Student and teacher information

| Measure | District | Peer average | State average |
|--------------------------------------|----------|--------------|---------------|
| Attendance rate | 93% | 95% | 95% |
| Graduation rate (2008) | 0% | 55% | 75% |
| Poverty rate | 11% | 12% | 19% |
| Student/teacher ratio | 13.4 | 10.7 | 17.1 |
| Average teacher salary | \$37,079 | \$45,399 | \$45,209 |
| Average years' experience | 6.3 | 10.9 | 8.3 |
| Percent of teachers in first 3 years | 50% | 18% | 16% |

Proposition 301

Teacher pay

On average, teachers earned \$5,560 in additional salary.

Performance pay plan goals and results

| Type of goal | Goal met? |
|----------------------------------|-----------|
| Student achievement | ■ |
| Dropout/ graduation rates | ■ |
| Student attendance | ■ |
| Parent/student satisfaction | ■ |
| Teacher attendance | ■ |
| Teacher professional development | ■ |
| Teacher evaluations | ■ |
| Tutoring | ■ |
| Other | ■ |

■ = yes, □ = no, and ▮ = partially

Per-pupil spending by function

| | District | | Peer | State | National |
|------------------------------|-----------------|----------------|-----------------|----------------|----------------|
| | 2008 | 2009 | 2009 | 2009 | 2007 |
| Total | \$10,163 | \$9,856 | \$15,223 | \$7,908 | \$9,683 |
| Classroom dollars | \$4,239 | \$4,238 | \$7,195 | \$4,497 | \$5,903 |
| Nonclassroom dollars: | \$5,924 | \$5,618 | \$8,028 | \$3,411 | \$3,780 |
| Administration | 1,885 | 2,025 | 2,646 | 729 | 1,050 |
| Plant Operations | 1,792 | 1,543 | 2,496 | 920 | 951 |
| Food Service | 967 | 1,000 | 800 | 382 | 369 |
| Transportation | 274 | 219 | 1,036 | 343 | 406 |
| Student Support | 471 | 424 | 529 | 594 | 512 |
| Instruction Support | 533 | 400 | 520 | 431 | 470 |
| Other | 2 | 7 | 1 | 12 | 22 |