

Classroom Dollars and Proposition 301 Results

Clifton Unified School District

Greenlee County

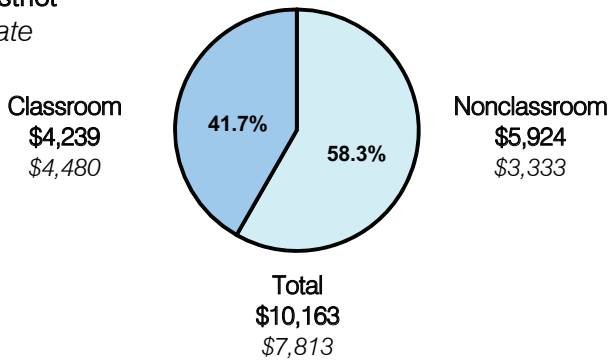
District size: Very Small
 Students attending: 129
 Number of schools: 2
 Number of certified teachers: 7

Classroom Dollars

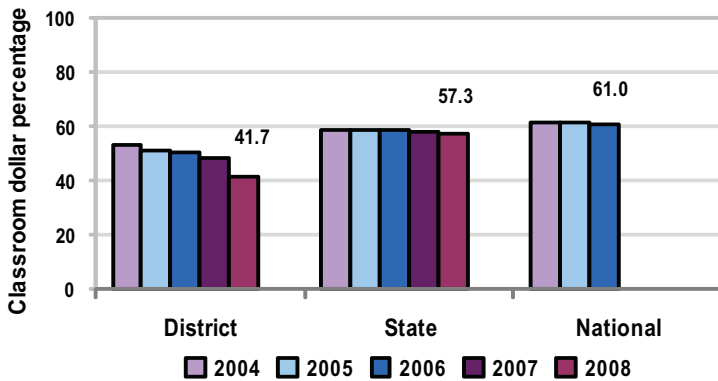
Fiscal year 2008 averages per pupil

District

State



5-year comparison



Expenditures by function

	District					State 2008	National 2006
	2004	2005	2006	2007	2008		
Classroom dollars	53.1	51.1	50.5	48.2	41.7	57.3	61.0
Nonclassroom dollars:							
Administration	19.4	17.4	16.9	16.8	18.5	9.2	10.8
Plant operations	11.8	13.6	15.1	15.3	17.6	11.3	9.9
Food service	8.9	8.5	8.7	8.5	9.5	4.8	3.8
Transportation	1.8	2.6	2.6	2.7	2.7	4.4	4.2
Student support	4.0	4.5	4.5	5.6	4.7	7.4	5.2
Instruction support	1.0	2.3	1.7	2.9	5.3	5.4	4.9
Other						0.2	0.2

Comparative Information

	District			State
	2006	2007	2008	2008
Student/teacher ratio	12.8	10.2	17.2	17.3
Average teacher salary	\$31,807	\$30,915	\$34,537	\$44,967
Average years' experience	8.3	7.3	6.5	8.1

Classroom dollar ranking: 209 of 230 districts.

Proposition 301

District-reported 2008 results

Teacher pay

- On average, each teacher earned an additional \$6,227 in salary.

Performance

- The District accomplished its goals, which were the same as the prior fiscal year's goals and were based on district and school performance.
- 1 of the District's 2 schools met Adequate Yearly Progress objectives.
- 90 percent of students showed a 5 percent growth in AIMS test scores.
- Teachers received acceptable ratings on performance evaluations, provided after-school tutoring, maintained weekly lesson plans that were aligned with state standards, and reported grades on a weekly basis to keep parents informed.
- The District conducted a parent satisfaction survey.

Menu

- Monies were used solely to increase teacher compensation.