

Classroom Dollars and Proposition 301 Results

Clifton Unified School District

Greenlee County

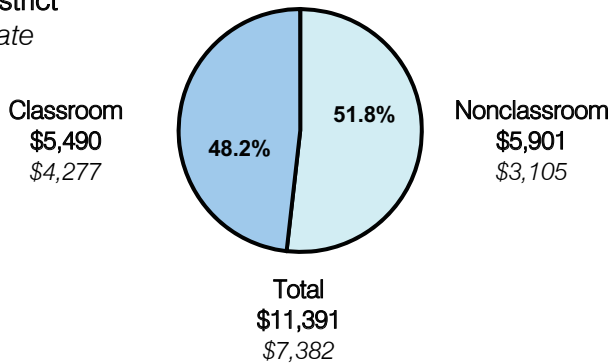
District size: Very Small
 Students attending: 128
 Number of schools: 2
 Number of certified teachers: 12

Classroom Dollars

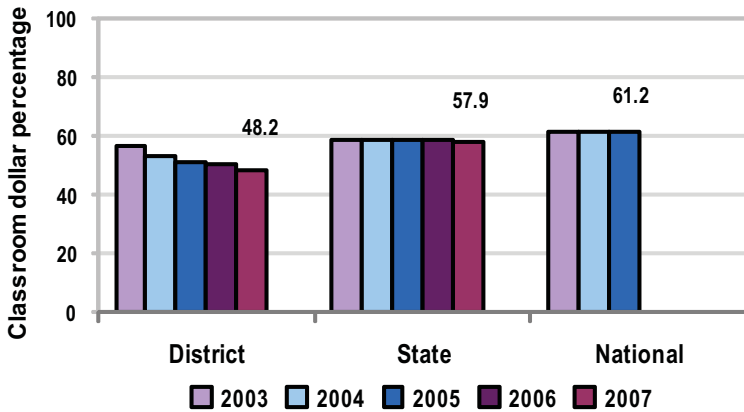
Fiscal year 2007 averages per pupil

District

State



5-year comparison



Expenditures by function

	District					State 2007	National 2005
	2003	2004	2005	2006	2007		
Classroom dollars	56.8	53.1	51.1	50.5	48.2	57.9	61.2
Nonclassroom dollars:							
Administration	15.8	19.4	17.4	16.9	16.8	9.5	11.0
Plant operations	8.6	11.8	13.6	15.1	15.3	11.3	9.6
Food service	8.3	8.9	8.5	8.7	8.5	4.7	3.9
Transportation	1.9	1.8	2.6	2.6	2.7	4.3	4.1
Student support	6.8	4.0	4.5	4.5	5.6	7.3	5.2
Instruction support	1.0	1.0	2.3	1.7	2.9	4.8	4.8
Other	0.8					0.2	0.2

Comparative Information

	District			State
	2005	2006	2007	2007
Student/teacher ratio	13.5	12.8	10.2	17.4
Average teacher salary	\$32,414	\$31,807	\$30,915	\$43,833
Average years' experience	8.9	8.3	7.3	8.1

Classroom dollar ranking: 187 of 229 districts.

Proposition 301

District-reported 2007 results

Teacher pay

- On average, teachers earned an additional \$5,291 in salary.

Performance

- The District accomplished its goals, which were the same as the prior fiscal year's goals and were based on district and school performance.
- Students achieved Adequate Yearly Progress on a school-wide basis, and at least 90 percent of students showed a 5 percent growth in AIMS test scores.
- Teachers received acceptable ratings on performance evaluations.
- After-school tutorials were provided for students who were failing or at risk of failing.
- Teachers maintained weekly lesson plans that were aligned with state standards, and they reported grades on a weekly basis to keep parents informed.
- The District conducted a parent/student school quality survey.

Menu

- Monies were used solely to increase teacher compensation.