

# Cochise Elementary School District

Cochise County  
Operational peer group: L  
Legislative districts: 25

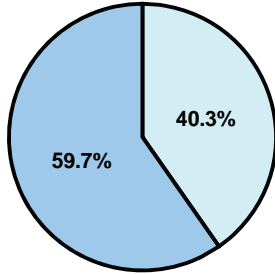
District size: Very Small  
Students attending: 82  
Number of schools: 1

## OPERATIONAL EFFICIENCY

### Average per-pupil spending

District  
State

**Classroom**  
**\$9,609**  
\$4,497



**Nonclassroom**  
**\$6,499**  
\$3,411

**Total**  
**\$16,108**  
\$7,908

### 5-year trend

Student enrollment increased 24 percent, which contributed to the 7 percent decrease in total spending per pupil. Spending in the classroom was very inconsistent year to year and decreased significantly overall from 62.7 to 59.7 percent. Spending on plant operations and instruction support increased significantly, while spending in other nonclassroom areas varied year to year.

## District's cost measures relative to peer group

Operational Area	Measure	District	Peer Average	State Average
Administration	Cost per pupil	\$1,694	\$2,656	\$729
	Students per administrator	53	32	66
Plant Operations	Cost per square foot	\$9.37	\$7.53	\$6.40
	Square footage per student	312	318	144
Food Service	Cost per meal equivalent	\$3.88	\$5.10	\$2.53
Transportation	Cost per mile	\$0.78	\$1.79	\$3.36
	Miles per rider	304	710	271

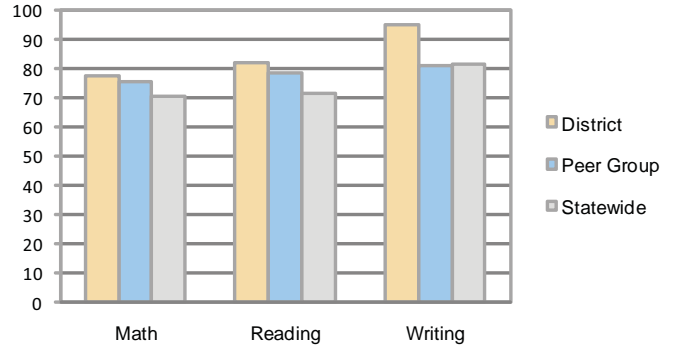
Very Low   Low   Comparable   High   Very High

## Per-pupil spending by function

	District		Peer	State	National
	2008	2009	2009	2009	2007
<b>Total</b>	<b>\$15,364</b>	<b>\$16,108</b>	<b>\$16,311</b>	<b>\$7,908</b>	<b>\$9,683</b>
<b>Classroom dollars</b>	<b>\$9,039</b>	<b>\$9,609</b>	<b>\$8,757</b>	<b>\$4,497</b>	<b>\$5,903</b>
<b>Nonclassroom dollars:</b>	<b>\$6,325</b>	<b>\$6,499</b>	<b>\$7,554</b>	<b>\$3,411</b>	<b>\$3,780</b>
Administration	1,730	1,694	2,656	729	1,050
Plant Operations	2,731	2,920	2,297	920	951
Food Service	635	684	859	382	369
Transportation	259	270	930	343	406
Student Support	58	184	474	594	512
Instruction Support	912	747	338	431	470
Other	0	0	0	12	22

## STUDENT ACHIEVEMENT AND TEACHER INFORMATION

### Percentage of students meeting state standards (AIMS)



### Adequate Yearly Progress (AYP) toward federal goals

The District's school met all applicable AYP objectives for NCLB.

## Student and teacher information

Measure	District	Peer average	State average
Attendance rate	96%	95%	95%
Graduation rate (2008)	N/A	55%	75%
Poverty rate	11%	12%	19%
Student/teacher ratio	10.3	10.7	17.1
Average teacher salary	\$53,470	\$45,399	\$45,209
Average years' experience	14.5	10.9	8.3
Percent of teachers in first 3 years	0%	18%	16%

## Proposition 301

### Teacher pay

On average, each teacher earned \$3,394 in additional salary.

### Performance pay plan goals and results

Type of goal	Goal met?
Student achievement	■
Dropout/ graduation rates	
Student attendance	
Parent/student satisfaction	■
Teacher attendance	
Teacher professional development	
Teacher evaluations	
Tutoring	
Other	

■ = yes, □ = no, and ▴ = partially